

GROUP DINING & VENUES

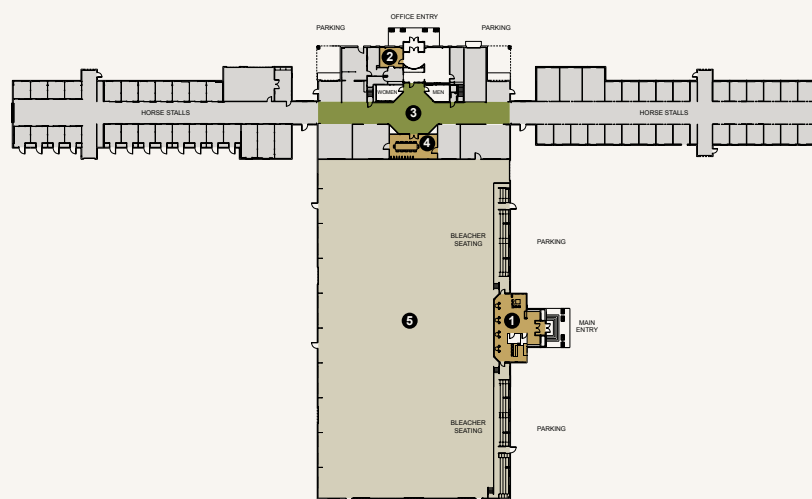


THE SADDLE CLUB



Montana's Premier Equestrian Destination

The Saddle Club at Paws Up is the largest private equestrian center in Montana, featuring a state-of-the-art 75,000-square-foot facility, including a 34,300-square-foot arena and multiple meeting and event spaces. Built in 1999, it serves as home to Paws Up's resident horses and offers an unparalleled setting for equestrian experiences.



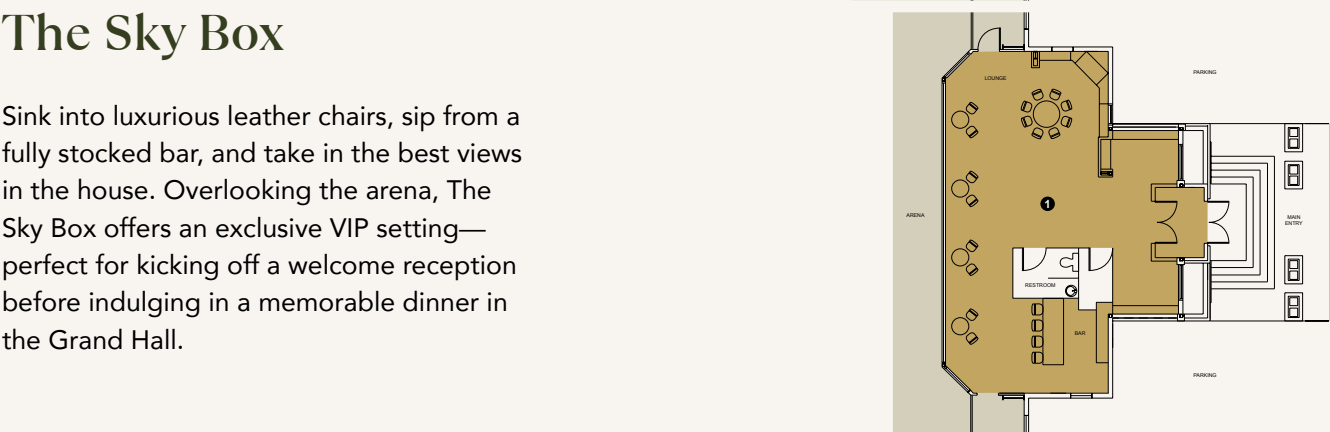
Key and Capacities		Square Footage	Dimensions (L x W)	Theater	Classroom	U-Shape	Hollow Square	Conference	Banquet	Reception
The Saddle Club		75,000								
1	Sky Box	828	36 x 23	30	20	16	20	10	16	30
2	Boardroom	238	17 x 14	—	—	—	8	—	—	—
3	Grand Hall	5,600	140 x 40	50	40	30	30	30	110	110
4	Tack Room	648	36 x 18	—	—	—	—	20	16	30
5	Arena	34,300	245 x 140	300	300	—	—	—	400	400

THE SADDLE CLUB



The Sky Box

Sink into luxurious leather chairs, sip from a fully stocked bar, and take in the best views in the house. Overlooking the arena, The Sky Box offers an exclusive VIP setting—perfect for kicking off a welcome reception before indulging in a memorable dinner in the Grand Hall.



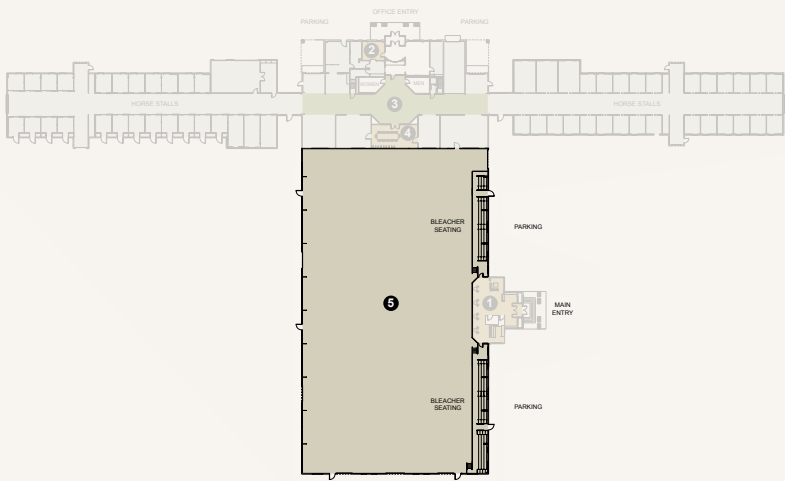
Key and Capacities		Square Footage	Dimensions (L x W)	Theater	Classroom	U-Shape	Hollow Square	Conference	Banquet	Reception
	The Saddle Club	75,000								
1	Sky Box	828	36 x 23	30	20	16	20	10	16	30

THE SADDLE CLUB



The Arena

Paws Up’s Equestrian Center is one of Montana’s premier facilities and home to our resident horses. This authentic ranch-style venue features a 34,300-square-foot arena, perfect for mustang demonstrations, equestrian experiences, and interactive adventures—creating an unforgettable setting for group events.



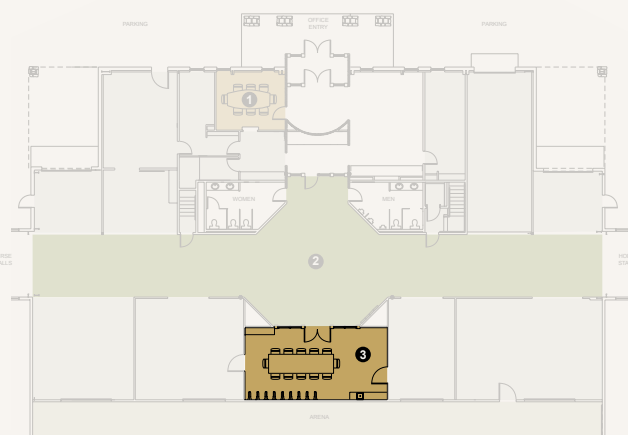
Key and Capacities		Square Footage	Dimensions (L x W)	Theater	Classroom	U-Shape	Hollow Square	Conference	Banquet	Reception
5	Arena	34,300	245 x 140	300	300	—	—	—	400	400

THE SADDLE CLUB



The Tack Room

Just off the arena, The Tack Room is a warm and inviting space that embodies Montana's equestrian spirit. With leather saddles and tack adorning the walls and candelabras lining the tables, it offers a unique blend of cozy charm and lively energy—much like the horses just next door.



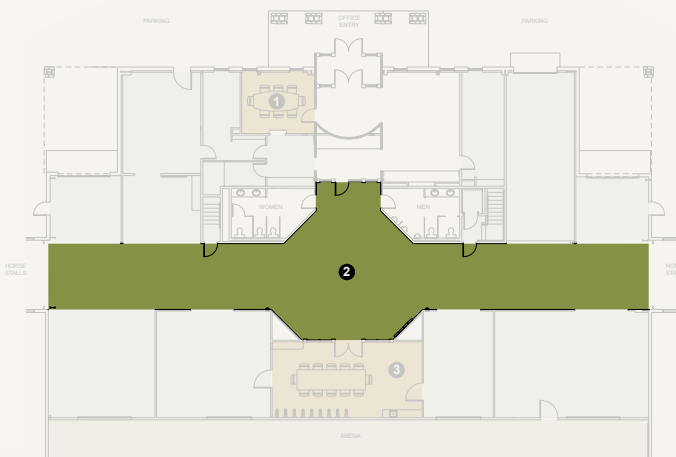
Key and Capacities		Square Footage	Dimensions (L x W)	Theater	Classroom	U-Shape	Hollow Square	Conference	Banquet	Reception
3	Tack Room	648	36 x 18	—	—	—	—	20	16	30

THE SADDLE CLUB



The Grand Hall

A grand hall deserves a grand table, and the Saddle Club Grand Hall delivers. Spanning the length of the Equestrian Center, this elegant space sets the stage for unforgettable events. Warm natural pine walls create an inviting atmosphere, while unique light fixtures cast a captivating glow from above.



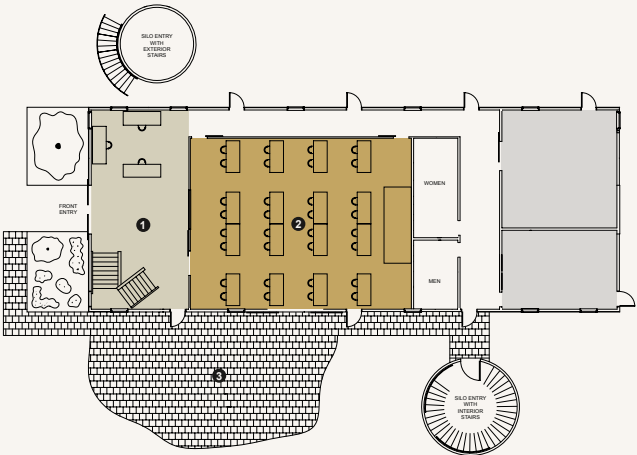
Key and Capacities		Square Footage	Dimensions (L x W)	Theater	Classroom	U-Shape	Hollow Square	Conference	Banquet	Reception
2	Grand Hall	5,600	140 x 40	50	40	30	30	30	90	90

THE BULL BARN



The Heart of Paws Up

The Bull Barn is the heart and soul of Paws Up, not just for its central location in the Village, but for its rich history. Once the site of lively bull auctions, today it houses some of the most authentic and charming venues, perfect for hosting unforgettable private events.



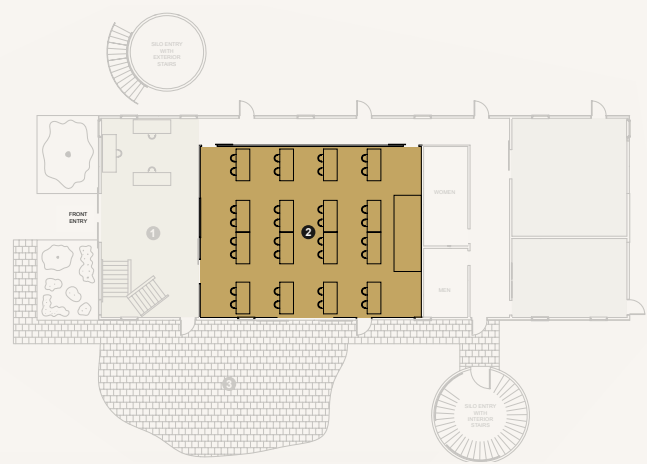
Key and Capacities		Square Footage	Dimensions (L x W)	Theater	Classroom	U-Shape	Hollow Square	Conference	Banquet	Reception
	The Bull Barn Conference Floor	4,536	108 x 42							
1	Reception Area and Business Center	520	20 x 26	—	—	—	—	—	—	—
2	Hereford Pen	1,665	45 x 37	70	70	60	50	55	65	80
3	Bull Pen Patio	1,680	48 x 35	—	—	—	—	—	75	100

THE BULL BARN



Hereford Pen

At the heart of the Bull Barn’s first floor, the Hereford Pen combines the rustic charm of this 100-year-old barn with modern technology for the next century. Large sliding barn doors open to the Bull Barn Patio, offering sweeping views of Paws Up.



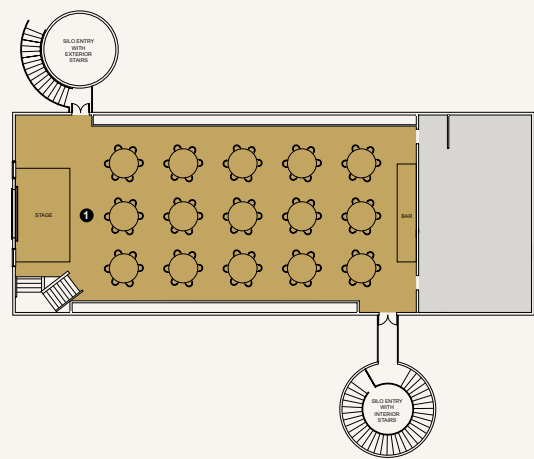
Key and Capacities		Square Footage	Dimensions (L x W)	Theater	Classroom	U-Shape	Hollow Square	Conference	Banquet	Reception
2	Hereford Pen	1,665	45 x 37	70	70	60	50	55	65	80

THE BULL BARN



Great Angus Hall

With its original vaulted timbers and expansive 3,145 square feet, this space makes any event feel truly momentous. Once home to the majestic sires of our Black Angus herd, the top floor of the barn now offers a warm, rustic elegance, where pine wood and dramatic chandeliers set the stage for weddings, receptions, and social gatherings of all sizes.



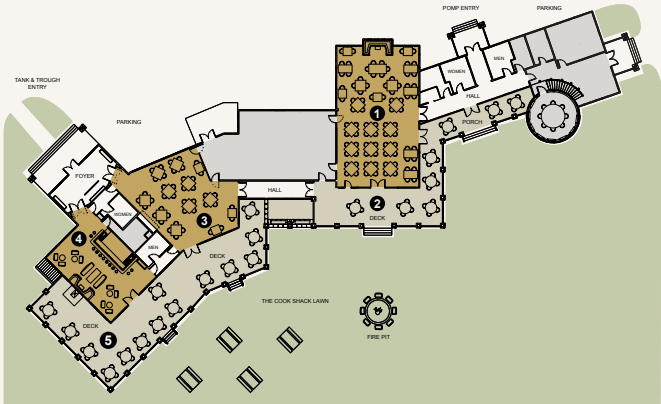
Key and Capacities		Square Footage	Dimensions (L x W)	Theater	Classroom	U-Shape	Hollow Square	Conference	Banquet	Reception
	The Bull Barn Second Floor	4,536	108 x 42							
1	Great Angus Hall	3,145	85 x 37	175	150	100	85	85	160	200

THE COOK SHACK



A Gathering Place

Located in the heart of the Village at Paws Up, the Cook Shack is far more than its name suggests. Home to two restaurants, a bar, and a meeting space, it's where our executive chef crafts Montana-inspired cuisine that celebrates the spirit of the ranch.



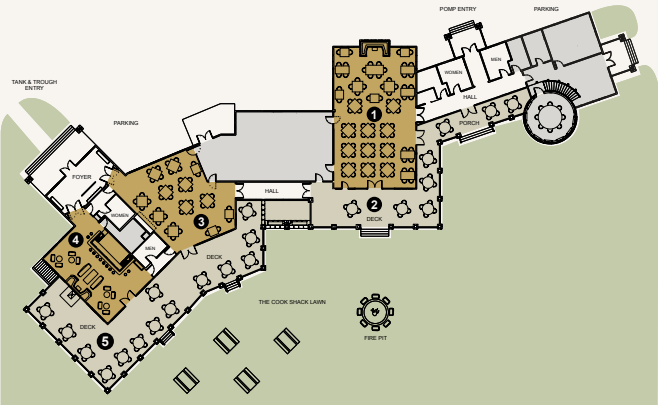
Key and Capacities		Square Footage	Dimensions (L x W)	Theater	Classroom	U-Shape	Hollow Square	Conference	Banquet	Reception
	The Cook Shack	5,057								
1	Pump	2,100	60 x 35	65	60	24	30	30	80	150
2	Pump - Exterior Deck	1,575	—	—	—	—	—	—	100	75
3	Trough	1,512	36 x 42	66	50	30	40	30	66	115
4	Tank	1,131	29 x 39	—	—	—	—	—	—	50
5	Tank & Trough - Exterior Deck	2,560	—	—	—	—	—	—	55	125

THE COOK SHACK



The Yard

Whether you’re craving an al fresco dining experience or a hearty Angus burger between rounds of horseshoes, The Yard delivers. With fresh Montana air and breathtaking views, every meal becomes an unforgettable part of your event.



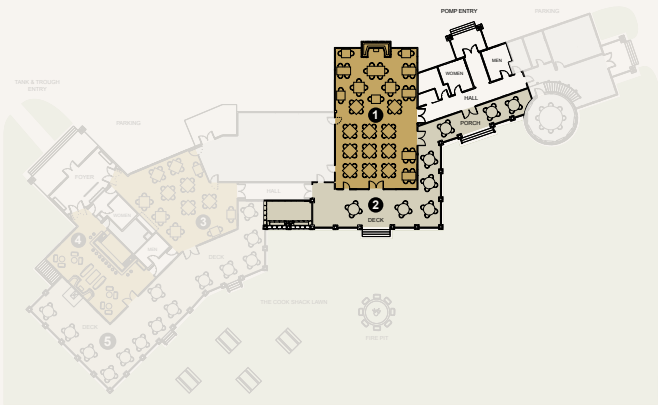
Key and Capacities		Square Footage	Dimensions (L x W)	Theater	Classroom	U-Shape	Hollow Square	Conference	Banquet	Reception
	The Cook Shack	5,057								

THE COOK SHACK



Pomp

Pomp, the Cook Shack’s fine-dining restaurant, is available for select private events during breakfast and lunch. Showcasing refined ranch cuisine, the menu highlights seasonal ingredients—many sourced directly from Paws Up. While an oversized hearth serves as the restaurant’s centerpiece, the true star is the ever-evolving culinary experience.



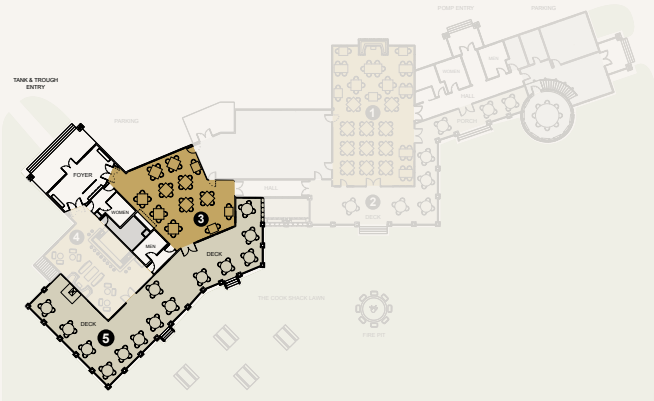
Key and Capacities		Square Footage	Dimensions (L x W)	Theater	Classroom	U-Shape	Hollow Square	Conference	Banquet	Reception
1	Pomp	2,100	60 x 35	65	60	24	30	30	80	150
2	Pomp - Exterior Deck	1,575	—	—	—	—	—	—	100	75

THE COOK SHACK



Trough

Trough, Paws Up’s casual dining restaurant, offers rustic yet refined flavors with a Western touch. From huckleberry pancakes to locally sourced meats, the menu delivers home-cooked comfort in a relaxed setting. Canvas tent walls create a seamless flow from indoors to the patio and into The Yard, making it an ideal spot for private dinners.



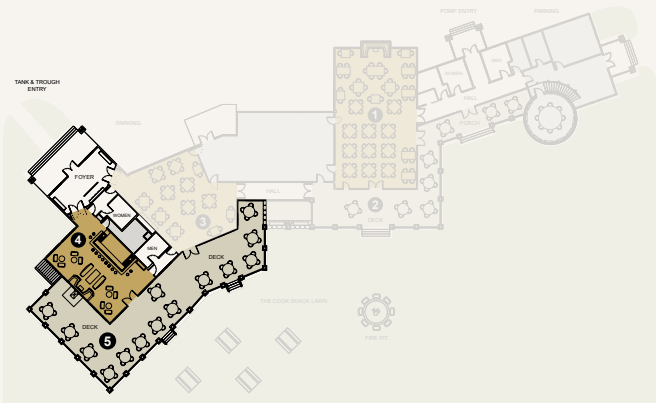
Key and Capacities		Square Footage	Dimensions (L x W)	Theater	Classroom	U-Shape	Hollow Square	Conference	Banquet	Reception
3	Trough	1,512	36 x 42	66	50	30	40	30	66	115
5	Tank & Trough - Exterior Deck	2,560	—	—	—	—	—	—	55	125

THE COOK SHACK



Tank

Tank is a full-service luxury cocktail bar with an exceptional selection of drinks, plush leather seating, and breathtaking views. Whether you’re winding down after a day of adventure or wrapping up meetings, it’s the perfect place to relax.



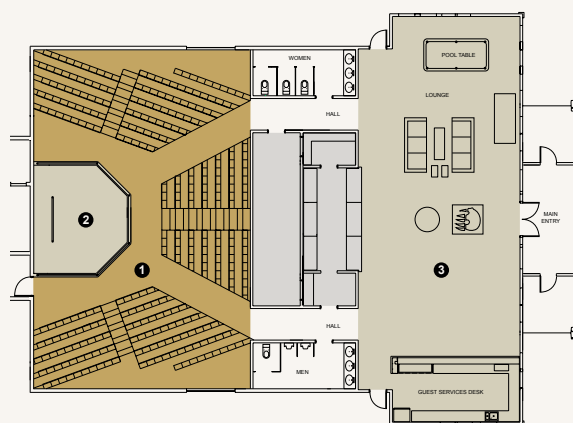
Key and Capacities		Square Footage	Dimensions (L x W)	Theater	Classroom	U-Shape	Hollow Square	Conference	Banquet	Reception
4	Tank	1,131	29 x 39	—	—	—	—	—	—	50
5	Tank & Trough - Exterior Deck	2,560	—	—	—	—	—	—	55	125

THE LEWIS & CLARK RECEPTION BARN



A Space for Connection

If 37,000 acres can have a front desk, this is it. Centrally located in the Village at Paws Up, the Lewis & Clark Reception Barn offers a warm welcome for all attendees. Guests can relax in the inviting lobby or enjoy a game of pool before heading to their accommodations. The hall also features an auditorium with a professional sound system and a permanent stage for presentations and performances.



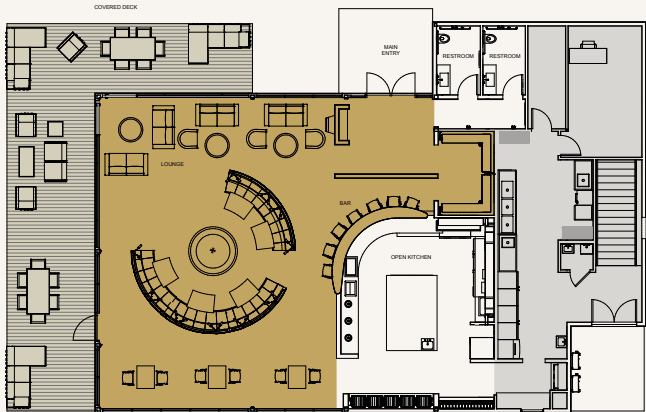
Key and Capacities		Square Footage	Dimensions (L x W)	Theater	Classroom	U-Shape	Hollow Square	Conference	Banquet	Reception
	Lewis & Clark Reception Barn	9,240	70 x 132							
1	Auditorium	2,560	40 x 64	200	—	—	—	—	20	100
2	Stage	360	18 x 20	—	—	—	—	10	—	—
3	Lobby	2,040	30 x 68	—	—	—	—	—	—	100

THE SOCIAL HAUS



A One-of-a-Kind Setting

Exclusive to guests of the green o, the Social Haus features an open kitchen and floor-to-ceiling windows, offering the perfect space to take in Montana’s vast skies and inspiring views. Whether it’s a group meal, intimate conversation, or handcrafted cocktails, this unique venue sets the perfect tone for any gathering.



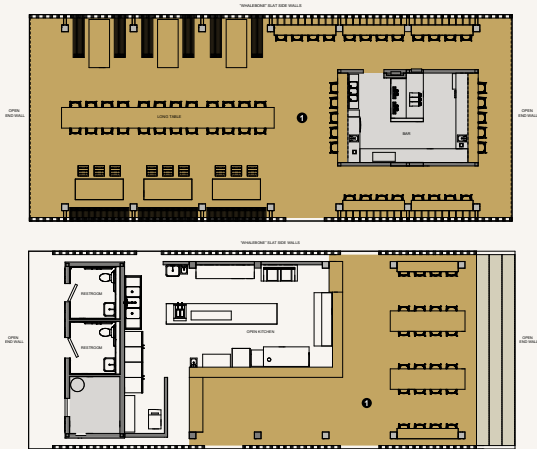
Key and Capacities		Square Footage	Dimensions (L x W)	Theater	Classroom	U-Shape	Hollow Square	Conference	Banquet	Reception
	the green o – Social Haus	2,745	61 x 45							
1	Dining Room	1,980	44 x 45	–	–	–	–	–	–	–
2	Covered Deck	680	17 x 40	–	–	–	–	–	–	–

SHED



An Elevated Open-Air Experience

Once a food truck, now a destination—Shed offers a seasonal, open-air dining space where arching pine beams provide shade, and a 250-gallon smoker and six-foot stone hearth craft bold, smoky flavors. Open in the summer only, it's perfect for group meals, meetings, and events.



Key and Capacities		Square Footage	Dimensions (L x W)	Theater	Classroom	U-Shape	Hollow Square	Conference	Banquet	Reception
	SHED®	4,015								
1	Shed A: Bar and Dining	1,915	29 x 66	—	—	—	—	—	—	—
1	Shed B: BBQ & Grill	2,100	30 x 70	—	—	—	—	—	—	—

THE ISLAND LODGE



A Secluded Retreat for Thoughtful Gatherings

Tucked away among towering pine trees on Salmon Lake, the Island Lodge is a hidden gem. With an island butler and chef at your service, it offers an intimate atmosphere ideal for dinners, small group discussions, and inspiration.

THE PICNIC SITE



A Riverfront Venue for Every Occasion

Nestled along the banks of the Blackfoot River, this stunning space is perfect for any occasion—whether it's a white-linen dinner under the stars, a wedding ceremony, or a fly-fishing demo. Let your dreams come to life amidst the beauty of Paws Up and Montana's wilderness.

THE CHUCKWAGON



An Authentic Outdoor Feast

You'll be transported to the banks of the Blackfoot River—and back in time—for a chuck wagon dinner. Tomahawk steaks, cedar plank salmon, huckleberry cobbler, and s'mores are all prepared over an open fire, offering a taste of the homesteader life. The very, very good homesteader life.

THE CAMP DINING PAVILIONS



A Culinary Experience in Nature

For those enjoying Paws Up's glamping experience, these pavilions can be made exclusive to your group. Each site is equipped with its own dedicated, highly trained chef who prepares meals in open-air pavilions, giving guests a front-row seat to the culinary magic. Whether you're enjoying a meal together or strategizing your next move, these pavilions offer a unique and unforgettable setting.