




LUXURY HOMES





LUXURY HOMES

If you think The Resort at Paws Up® is breathtakingly beautiful on the outside, wait until you step indoors. Catering to a small number of guests, Paws Up offers a selection of vacation homes, each impeccably appointed in an unrivaled tapestry of rustic elegance. The expansive Wilderness Estates are perfect for extended families, reunions and groups. The Big Timber Homes and Meadow Homes make an ideal refuge for smaller families and couples on a quest for privacy. For a true Montana experience, stay in our historic Morris Ranch House or Blackfoot River Lodge—idyllically situated on the banks of the legendary Blackfoot River. All accommodations blend Western-chic decor with a litany of amenities including kitchens, hot tubs, personal transportation, smart TVs, Wi-Fi, laundry and more.

Wilderness Estate

TWENTY-EIGHT LUXURY HOMES IN FIVE DIFFERENT STYLES



MEADOW HOMES

At Paws Up, we have a luxury home for every taste and all occasions—from romantic getaways to family outings to multigenerational reunions. You'll find the ideal accommodation to suit your specific needs, and we're confident that each home will provide the perfect setting for creating cherished memories that will last a lifetime.



BIG TIMBER HOMES

These 10 Montana vacation homes are available in three sizes: 1,200-square-foot homes with one bedroom (plus lofted bedroom)/one bathroom, 1,635-square-foot homes with two bedrooms/two bathrooms and 2,100-square-foot homes with three bedrooms/two bathrooms. Big Timber luxury homes easily accommodate between four and eight guests.



WILDERNESS ESTATES

At an expansive 3,250 square feet, the 10 estates come complete with panoramic vistas and an extensive list of features, including a great room with a vaulted ceiling, a chef's kitchen and a loft game room. Three master suites feature en suite bathrooms outfitted with spacious slate showers, jetted tubs, sumptuous spa products and plush towels.



MORRIS RANCH HOUSE

The Morris Ranch House is a historic private home situated among towering cottonwoods—adjacent to the picturesque Elk Creek. With four bedrooms, five bathrooms and all the modern conveniences of a luxury home, this beautiful accommodation is the perfect place for large family vacations or an executive retreat.



BLACKFOOT RIVER LODGE

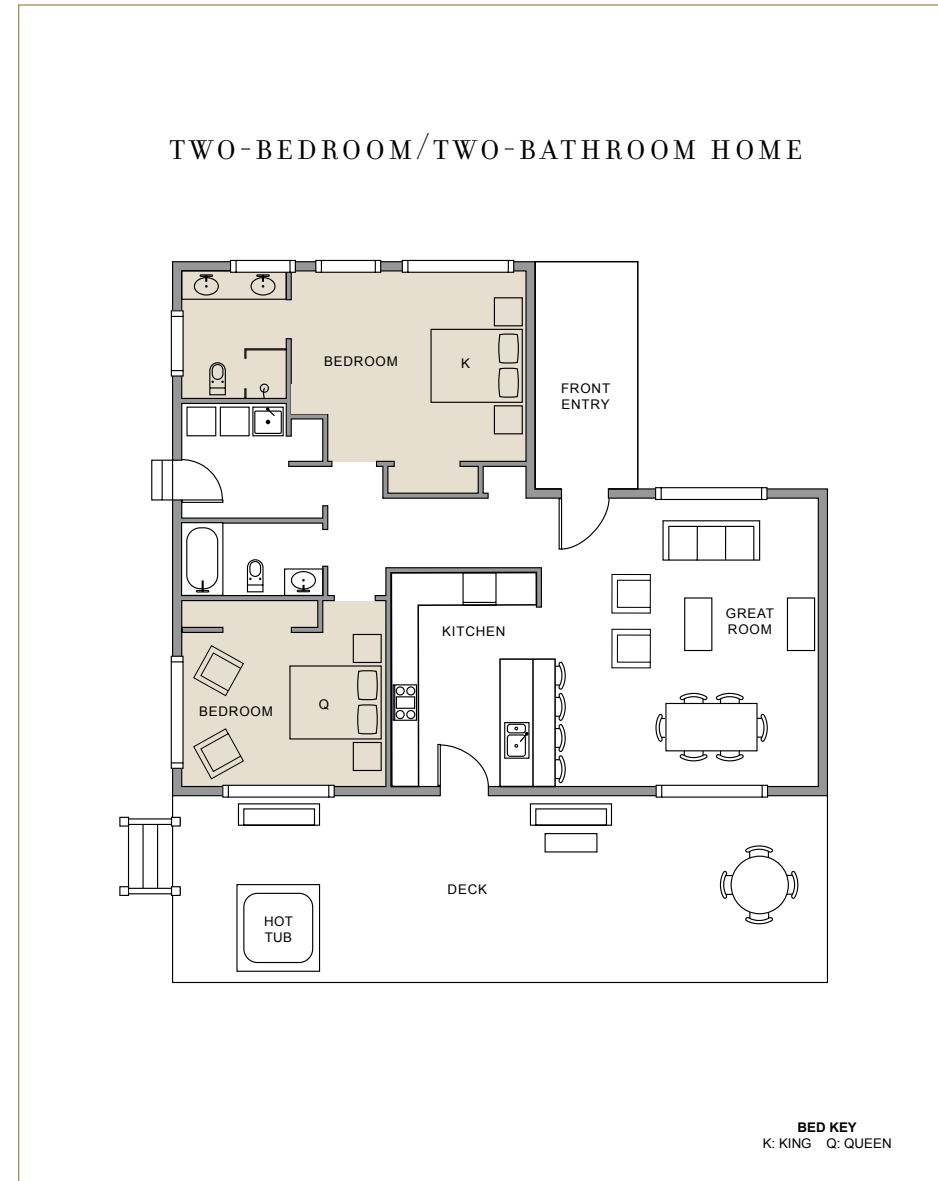
Nestled in a beautiful secluded setting on the banks of the Blackfoot River, the Blackfoot River Lodge is a family-friendly four-bedroom vacation home blending the charm of an authentic lodge with exquisite Western furnishings and decor. The lodge features a large stone fireplace, four exterior decks and spectacular views of the mighty Blackfoot River.

MEADOW HOMES

Conveniently located near the Village at Paws Up, the luxurious two-bedroom Meadow Homes are rich in comfort and Western style. With approximately 1,100 square feet of living area, these spacious homes provide plenty of room to roam. Each Meadow Home has two large bedrooms, two full bathrooms, a laundry room and a four-person hot tub. If you have a flair for cooking, or you just like to make the occasional midnight snack, the fully equipped kitchen offers everything you need, including range, refrigerator, microwave and dishwasher. The well-appointed great room features stylish rustic furnishings, a smart TV and Wi-Fi.

FEATURES AND AMENITIES

- Six 1,100-square-foot homes
- Master bedroom with en suite bathroom
- Second bedroom with unattached full bathroom
- Kitchen with refrigerator, range, dishwasher, microwave, toaster and coffeemaker
- Spacious great room
- Washer and dryer
- Smart TVs
- Complimentary Wi-Fi
- Terry robes and slippers
- Deck with four-person hot tub
- Lexus luxury SUV

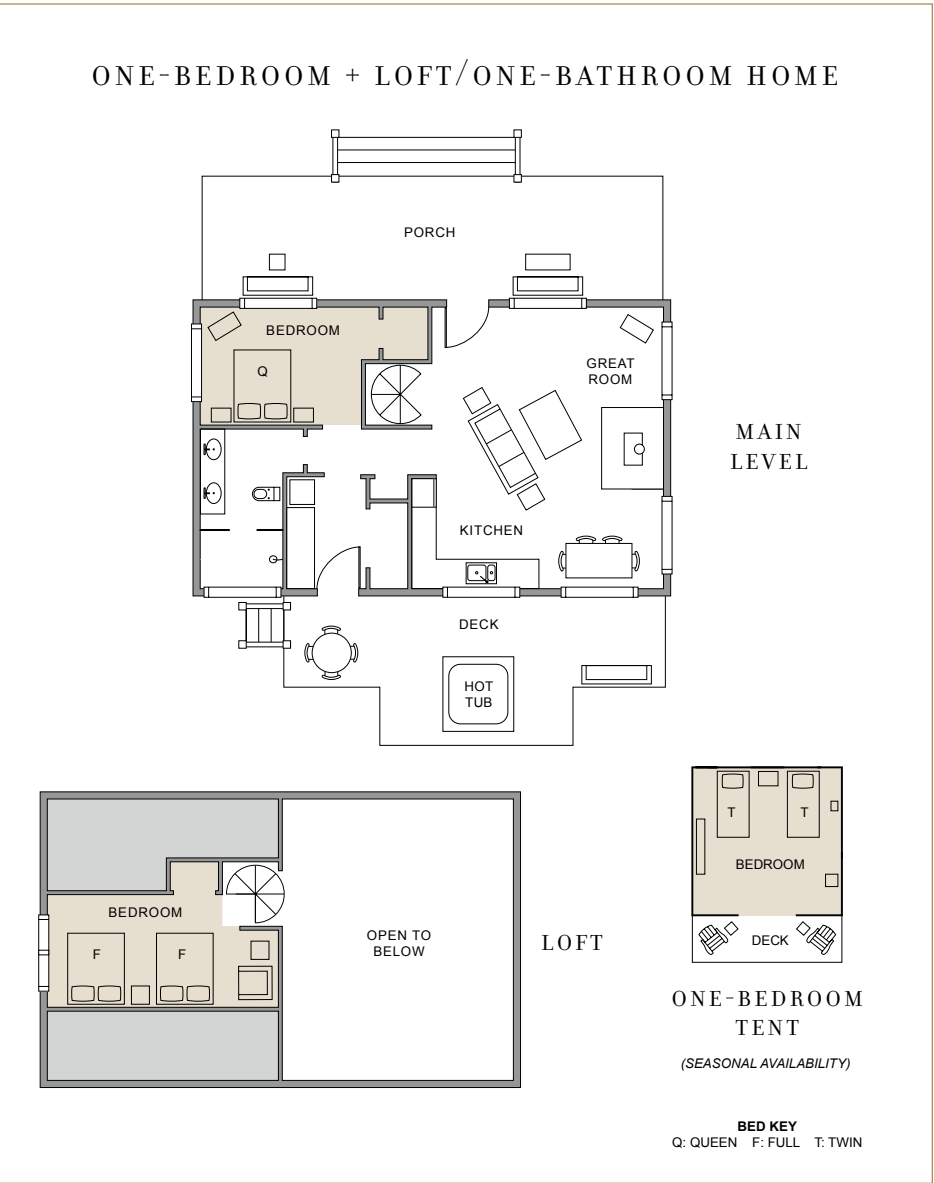


B I G T I M B E R H O M E S

The one-bedroom Big Timber Homes accommodate up to four guests and feature a master suite rich in Western-chic decor. The bathroom includes a heated slate floor, a vanity with double sinks and a Montana-sized shower. A black-iron spiral staircase leads to a charming, lofted bedroom for two. The rustic-yet-contemporary kitchen opens up to a great room with an inviting wood-burning stove—creating a relaxing and communal atmosphere. These homes are furnished with a laundry room with a full-size washer and dryer, multiple smart TVs, Wi-Fi, a hot tub and a Lexus luxury SUV.

FEATURES AND AMENITIES

- Two 1,200-square-foot homes
- Master bedroom
- Loft bedroom featuring two full beds
- Master bathroom on main level
- Great room with wood-burning stove
- Kitchen with refrigerator, dishwasher, microwave, toaster and coffeemaker
- Washer and dryer
- Smart TVs
- Complimentary Wi-Fi
- Terry robes and slippers
- Deck with four-person hot tub
- Lexus luxury SUV
- Optional private tent

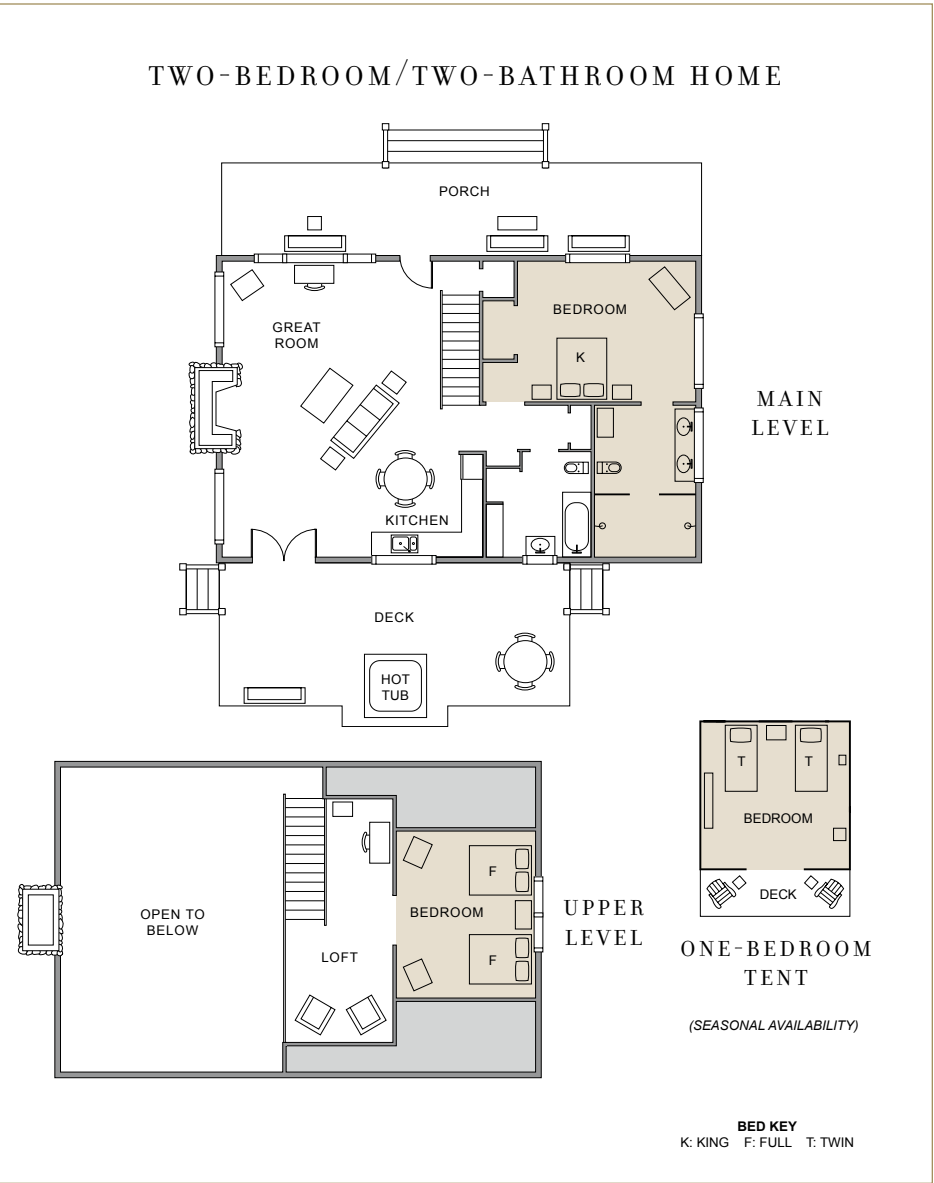


B I G T I M B E R H O M E S

The two-bedroom Big Timber Homes accommodate up to six guests and feature a striking, well-appointed master bedroom with plenty of space to stretch out and relax. Nothing washes away trail dust better than a visit to the spacious master bathroom with heated slate flooring, a vanity with double sinks and a roomy shower. To accommodate additional guests, each home has a loft with two full beds and a sitting area. The signatures of the expansive great room are the rustic, elegant furnishings and the beautiful stacked stone and natural timber fireplace. Rich in wilderness style, the contemporary kitchen includes stainless-steel appliances and a beautiful nook with enticing views of the surrounding timberland.

FEATURES AND AMENITIES

- Five 1,635-square-foot homes
- Master bedroom with en suite bathroom
- Loft bedroom featuring two full beds
- Second full bathroom on main level
- Great room with stone fireplace
- Kitchen with refrigerator, dishwasher, microwave, toaster and coffeemaker
- Washer and dryer
- Smart TVs
- Complimentary Wi-Fi
- Terry robes and slippers
- Deck with four-person hot tub
- Lexus luxury SUV
- Optional private tent

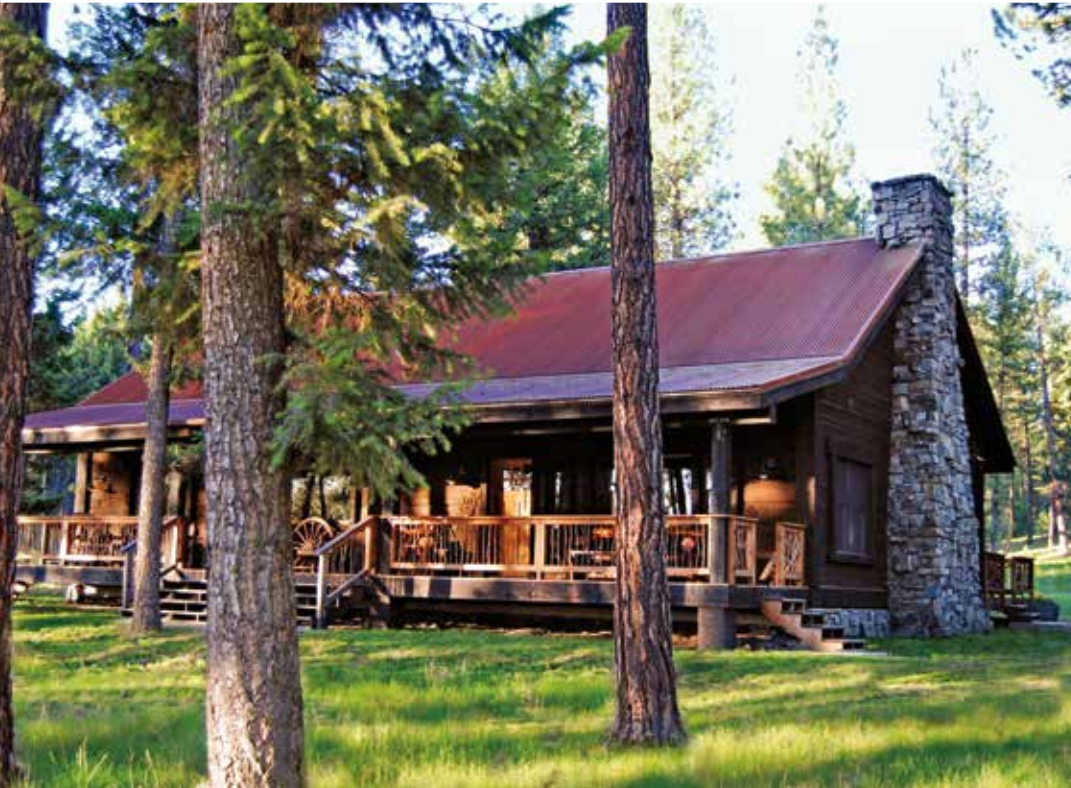
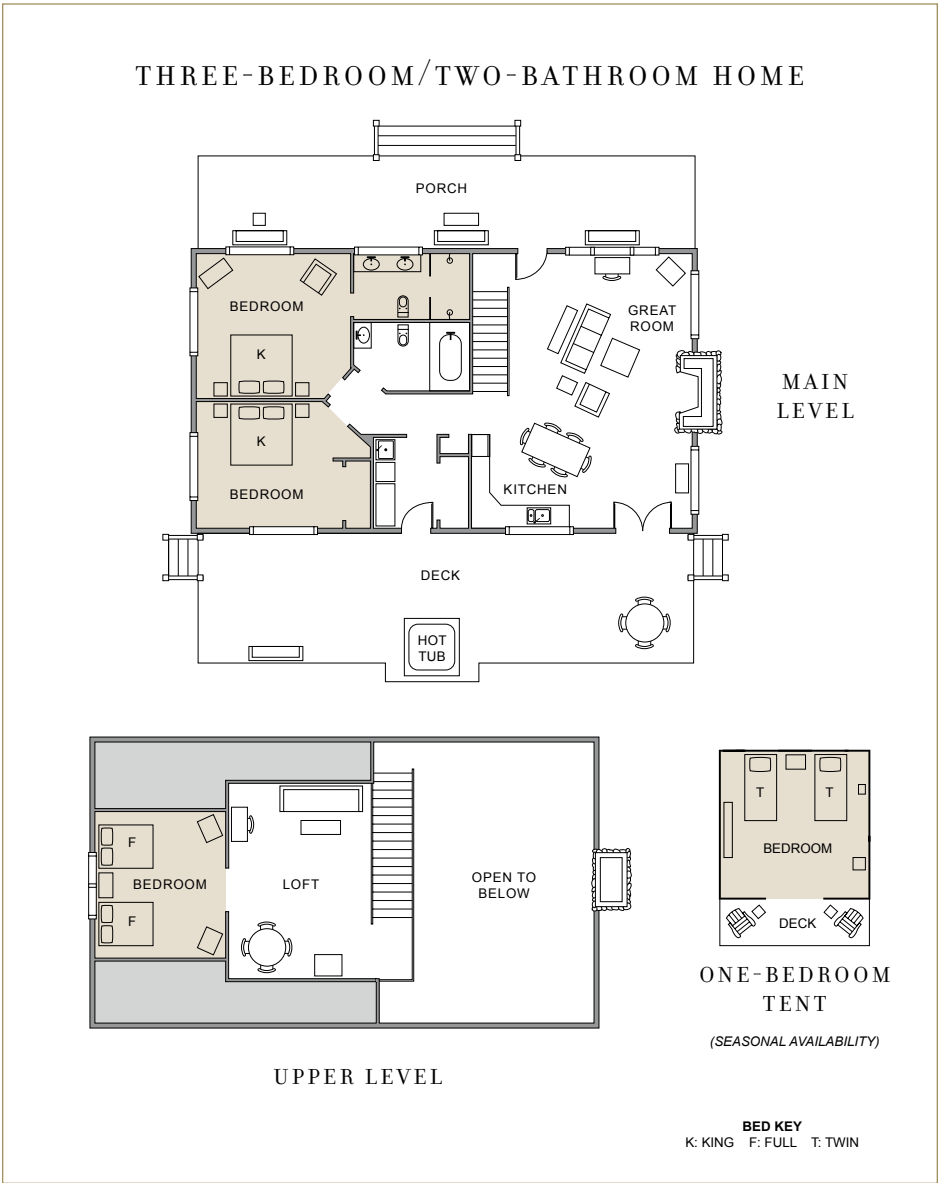


B I G T I M B E R H O M E S

The largest Big Timber Homes include three bedrooms and accommodate up to eight guests. These expansive 2,100-square-foot dwellings feature two bedrooms on the main floor, two well-appointed bathrooms and a loft and bedroom on the second floor. The spacious master bathroom includes a roomy, Montana-sized shower, and the second bathroom has the added luxury of a whirlpool bathtub. The kitchen offers guests a full-size refrigerator, dishwasher, deep-basin sink and a microwave. The highlight of the home is its enormous great room with a monumental stone fireplace, a beautiful mélange of unique Western furnishings and wilderness views.

FEATURES AND AMENITIES

- Three 2,100-square-foot homes
- Master bedroom with en suite bathroom
- Two additional bedrooms
- Second full bathroom on main level
- Great room with stone fireplace
- Kitchen with refrigerator, dishwasher, microwave, toaster and coffeemaker
- Washer and dryer
- Smart TVs
- Complimentary Wi-Fi
- Terry robes and slippers
- Deck with four-person hot tub
- Lexus luxury SUV
- Optional private tent

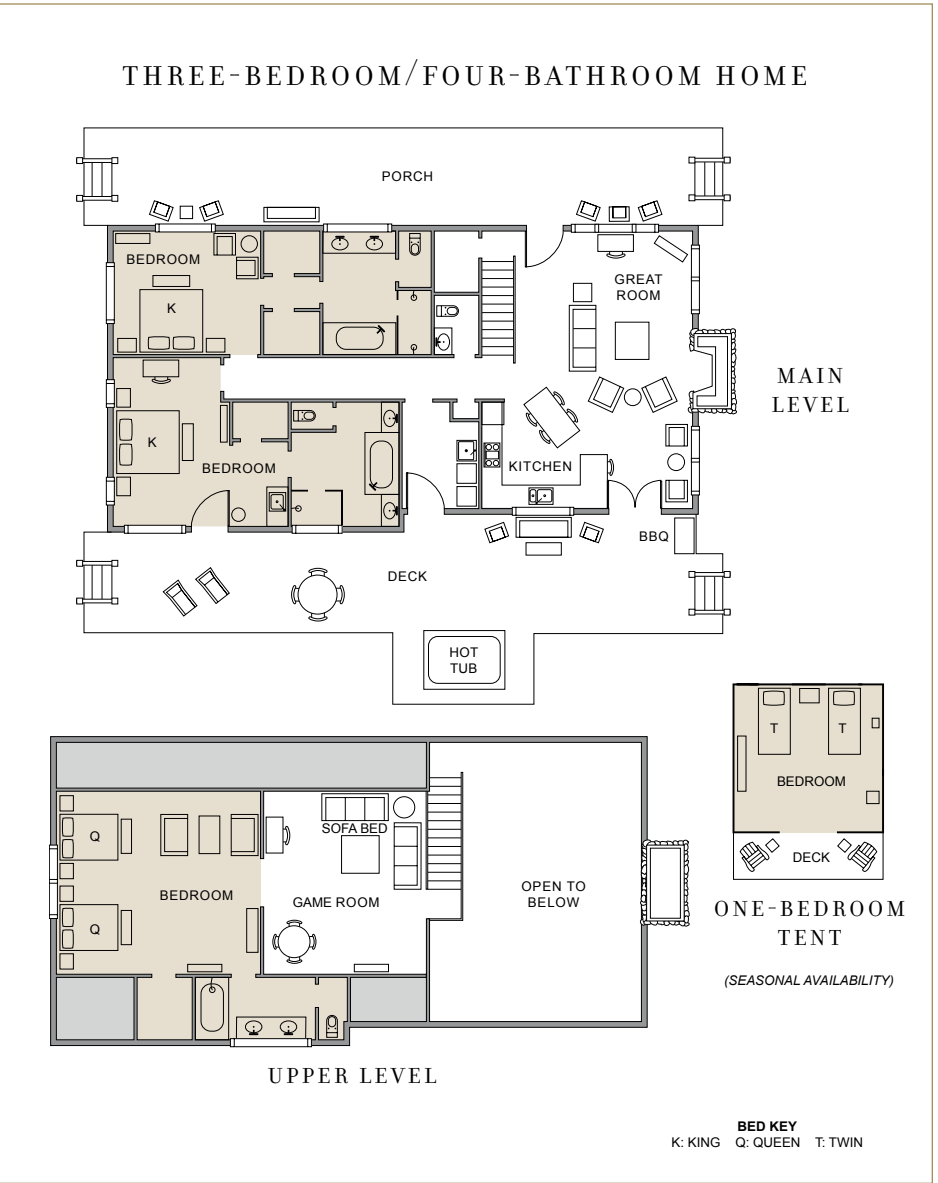


W I L D E R N E S S E S T A T E S

The Wilderness Estates at Paws Up feature panoramic vistas, unparalleled privacy and an extensive list of features, including a great room with a soaring vaulted ceiling, a beautiful stacked stone and natural timber fireplace, a chef's kitchen, a loft game room and three master suites featuring luxurious master bathrooms, each outfitted with a spacious slate shower, a jetted tub, sumptuous spa products and seriously plush towels. When you're ready to fully disconnect, saunter out to your sprawling private deck for a soak in your rejuvenating hot tub. If and when you're ready to reconnect, Wi-Fi and smart TVs are at your beck and call.

FEATURES AND AMENITIES

- Ten 3,250-square-foot homes
- 1,700-square-foot deck/porch
- Three separate master suites
- Jetted tubs and showers in each en suite bathroom
- Kitchen with refrigerator, range, dishwasher, microwave, toaster and coffeemaker
- Great room with stone fireplace
- Game room
- Washer and dryer
- Five smart TVs
- Complimentary Wi-Fi
- Terry robes and slippers
- Deck with six-person hot tub
- Lexus luxury SUV
- Optional private tent

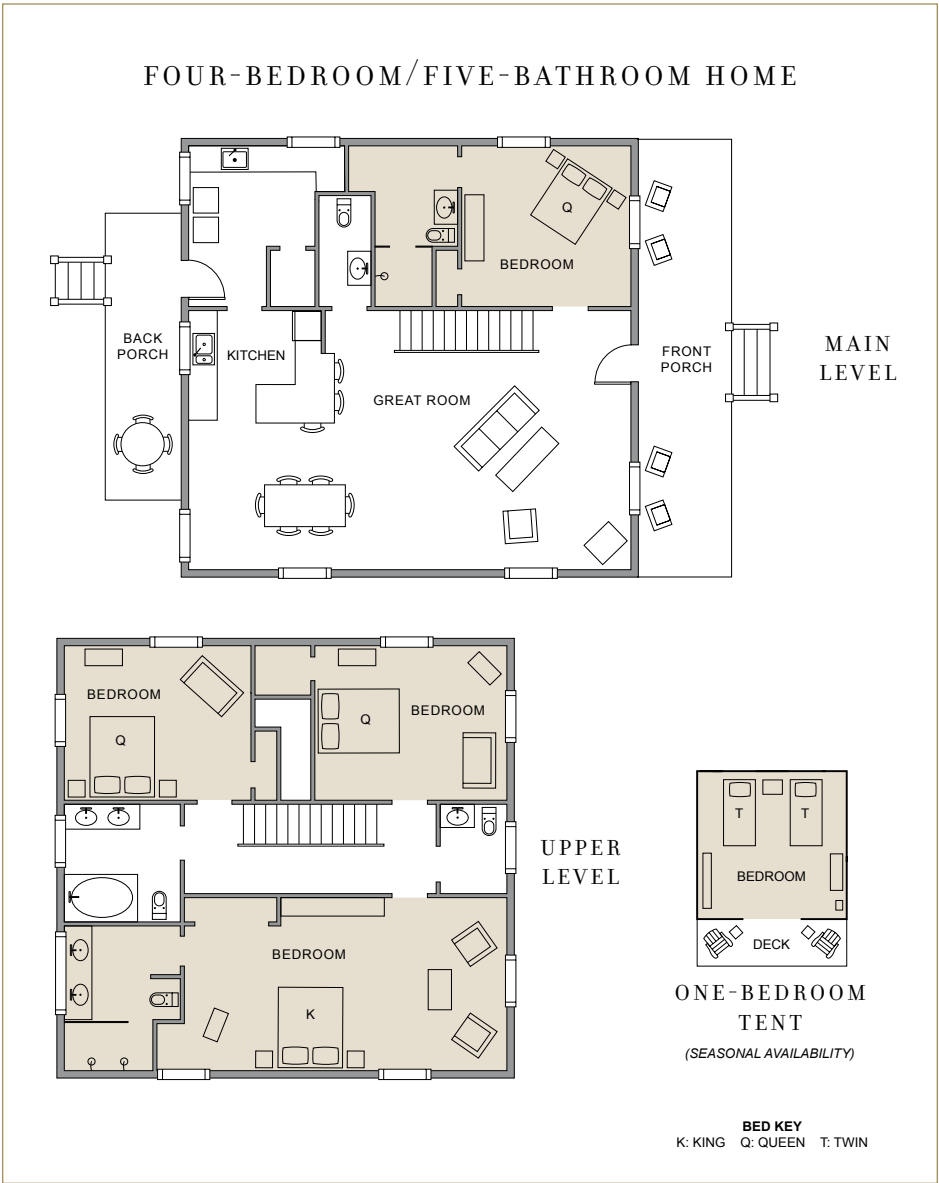


M O R R I S R A N C H H O U S E

The Morris Ranch House is a historic four-bedroom luxury home that offers the ultimate mountain retreat from the hustle and bustle of everyday life. Situated among towering cottonwoods and adjacent to the picturesque Elk Creek, this classic Montana ranch house offers privacy and seclusion to those looking to escape to the rolling and timbered pastureland of Big Sky Country. With four bedrooms, five bathrooms and all the modern conveniences of a luxury home, this beautiful accommodation is perfect for large multigenerational family vacations or an executive retreat. Of course, if business does call, Wi-Fi is readily available. Combining rich ranch history, seclusion and luxury, the Morris Ranch House makes for a truly unique and unforgettable Paws Up experience.

FEATURES AND AMENITIES

- 2,520-square-foot home
- Master bedroom with en suite bathroom
- Three additional bedrooms
- Four additional bathrooms
- Kitchen with refrigerator, range, dishwasher, microwave, toaster and coffeemaker
- Washer and dryer
- Smart TVs
- Complimentary Wi-Fi
- Four-person hot tub
- Lexus luxury SUV
- Private tent in backyard

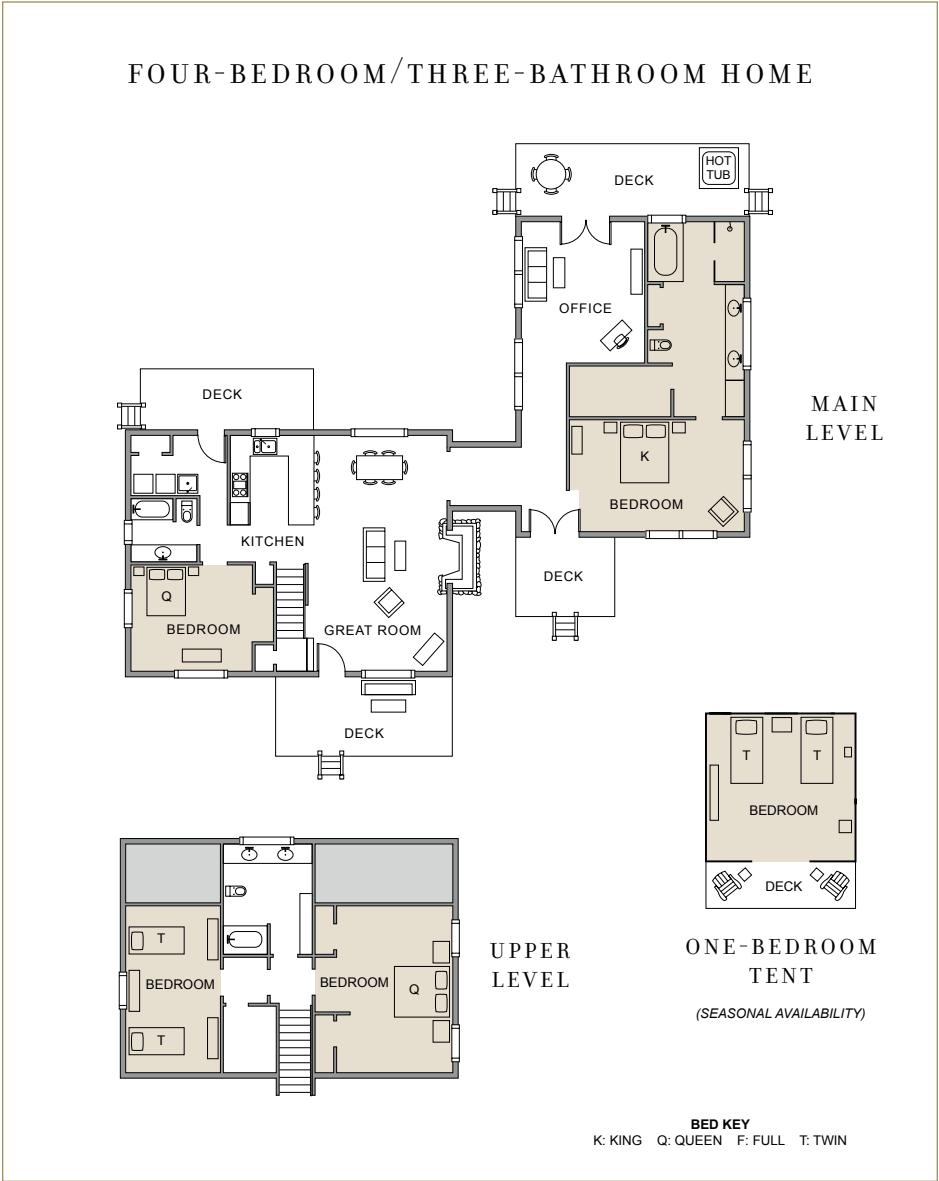


B L A C K F O O T R I V E R L O D G E

Nestled in a beautiful private setting on the banks of the Blackfoot River, the Blackfoot River Lodge blends the charm of an authentic rustic Montana cabin with exquisite Western furnishings and decor. This four-bedroom, three-bathroom home features the following: master bedroom suite with an enormous master bath, private office, full modern kitchen with slate flooring, dining room, living room with stone fireplace, laundry room, four decks and spectacular views of the mighty Blackfoot River. This well-appointed cabin also features a luxury tent located just steps away in the expansive backyard. Situated just a few yards from the riverbank, this chic canvas abode provides the perfect outdoor overnight wilderness adventure.

FEATURES AND AMENITIES

- 2,955-square-foot home
- Master bedroom with en suite bathroom
- Three additional bedrooms
- Two additional bathrooms
- Kitchen with refrigerator, range, dishwasher, microwave, toaster and coffeemaker
- Great room with stone fireplace
- Smart TVs
- Complimentary Wi-Fi
- Deck with four-person hot tub
- Lexus luxury SUV
- Private tent in backyard





Wilderness Estate
with Private Tent



LUXURY HOMES WITH TENTS

In addition to the luxury camping experience offered at our six full-service, tented camps, another way to create a memorable outdoor experience at Paws Up is by upgrading to a luxury home that features a private tent just outside. These tents are fully outfitted with lighting, a set of comfy beds, lounge furniture, toys and games. It’s the perfect adventure for big kids, little kids and parents who want to be kids again for a night. Please see the chart for a list of homes that include this incredibly unique amenity.

LUXURY HOME			PRIVATE TENT	
Type	Square Feet	Bdrm/Bath	Square Feet	Bdrm/Bath
Big Timber Home-1 bdrm/loft	1,200	2/1	500	1/NA
Big Timber Home-2 bdrm (x2)	1,635	2/2	500	1/NA
Big Timber Home-3 bdrm	2,100	3/2	500	1/NA
Wilderness Estate (x2)	3,250	3/4	500	1/NA
Morris Ranch House	2,520	4/5	500	1/NA
Blackfoot River Lodge	2,955	4/3	500	1/NA

(Tents have seasonal availability.)

LUXURY HOMES AT A GLANCE								
Luxury Home	Bedrooms	Bathrooms	Square Feet	Capacity	Private Tent in Backyard	Personal Vehicle	Cell Service and Wi-Fi	Number of Homes
Meadow Homes	2	2	1,100	4 guests	NA	Lexus luxury SUV	yes	6
Big Timber Homes	1 + loft	1	1,200	4 guests	optional <small>(seasonal availability)</small>	Lexus luxury SUV	yes	2
	2	2	1,635	6 guests				5
	3	2	2,100	8 guests				3
Wilderness Estates	3	4	3,250	8 guests	optional <small>(seasonal availability)</small>	Lexus luxury SUV	yes	10
Morris Ranch House	4	5	2,520	8 guests	yes <small>(seasonal availability)</small>	Lexus luxury SUV	yes	1
Blackfoot River Lodge	4	3	2,955	8 guests	yes <small>(seasonal availability)</small>	Lexus luxury SUV	yes	1



F R E Q U E N T L Y A S K E D Q U E S T I O N S



What's included in the rate for the luxury homes? Luxury home rates are for two adults (double occupancy) and include three meals per day, per person; all listed complimentary activities; round-trip airport shuttle service (one time per group) from/to Missoula International Airport; on-property transportation; beverages and all other listed amenities in each home and access to 37,000 acres of pristine Montana wilderness.

For more details on what's included in luxury home rates, refer to [Luxury Homes at a Glance](#) and the [Features and Amenities](#) sections in this guide.

How many luxury homes are available at Paws Up? Paws Up has 28 luxury homes. The Resort offers 2 one-bedroom homes with lofts, 11 two-bedroom homes, 13 three-bedroom homes and 2 four-bedroom homes. For guest capacities and additional details, refer to [Luxury Homes at a Glance](#) in this guide.

Are the luxury homes located close to the Village at Paws Up? Yes, the Meadow Homes, Big Timber Homes and Wilderness Estates are located adjacent to the Village at Paws Up. The Blackfoot River Lodge and Morris Ranch House are each located just a short drive from the Village.

What are the dining options when staying in a luxury home? Breakfast and lunch are served at Trough, our casual dining restaurant. Dinner is served at Pomp, our award-winning fine-dining restaurant featuring refined rustic ranch cuisine. Tank, our full-service bar is also open nightly.

All homes have a kitchen equipped with a refrigerator, dishwasher, microwave, toaster and coffeemaker. All Wilderness Estates feature a full chef's kitchen. Arrangements can be made for grocery shopping. In addition, complimentary in-home dining is available for all homes. Paws Up also offers an authentic chuck wagon outdoor dining experience nightly during the summer.

How do I get around The Resort? All 28 luxury homes come with the complimentary use of a Lexus luxury SUV (one per home). The SUVs can be used for transport to Spa Town®, the Wilderness Outpost (activities center), the Lewis & Clark Reception Barn as well as Pomp and Tank & Trough. In addition, Paws Up provides complimentary on-property shuttle service to all guests at all times.

Which luxury homes have a fireplace? The two- and three-bedroom Big Timber Homes, Wilderness Estates and Blackfoot River Lodge feature spacious great rooms with large natural stone and timber fireplaces. The one-bedroom Big Timber Homes with lofts have wood-burning stoves.

Are dogs allowed in the luxury homes? Yes, dogs are allowed in specified dog-friendly homes. There is a nightly pet fee, which includes a host of amenities to help your best canine friend feel as comfortable as you do. Some restrictions apply. For more details, please review our pet policy on [pawsup.com](#).

Which is the most luxurious home at Paws Up? Each home at Paws Up boasts an unrivaled level of luxury. Our newest and most luxurious homes are the Wilderness Estates. They are The Resort's largest homes, and each features three separate private master suites with en suite bathrooms—making them the ultimate accommodation for families and groups.

How do I determine which luxury home is best for my family? Each luxury home at Paws Up is spacious and has a unique layout, offering a variety of options that will cater to the size and specific needs of your family or group. We encourage you to look at each home's floor plan in this guide to discover their varied features and amenities.

Which luxury homes feature a private tent? Two Wilderness Estates, four Big Timber Homes, the Morris Ranch House and the Blackfoot River Lodge feature a private tent located just outside (seasonal availability).

Do the luxury homes have air-conditioning? Yes, every luxury home at Paws Up is independently climate-controlled, including air-conditioning.

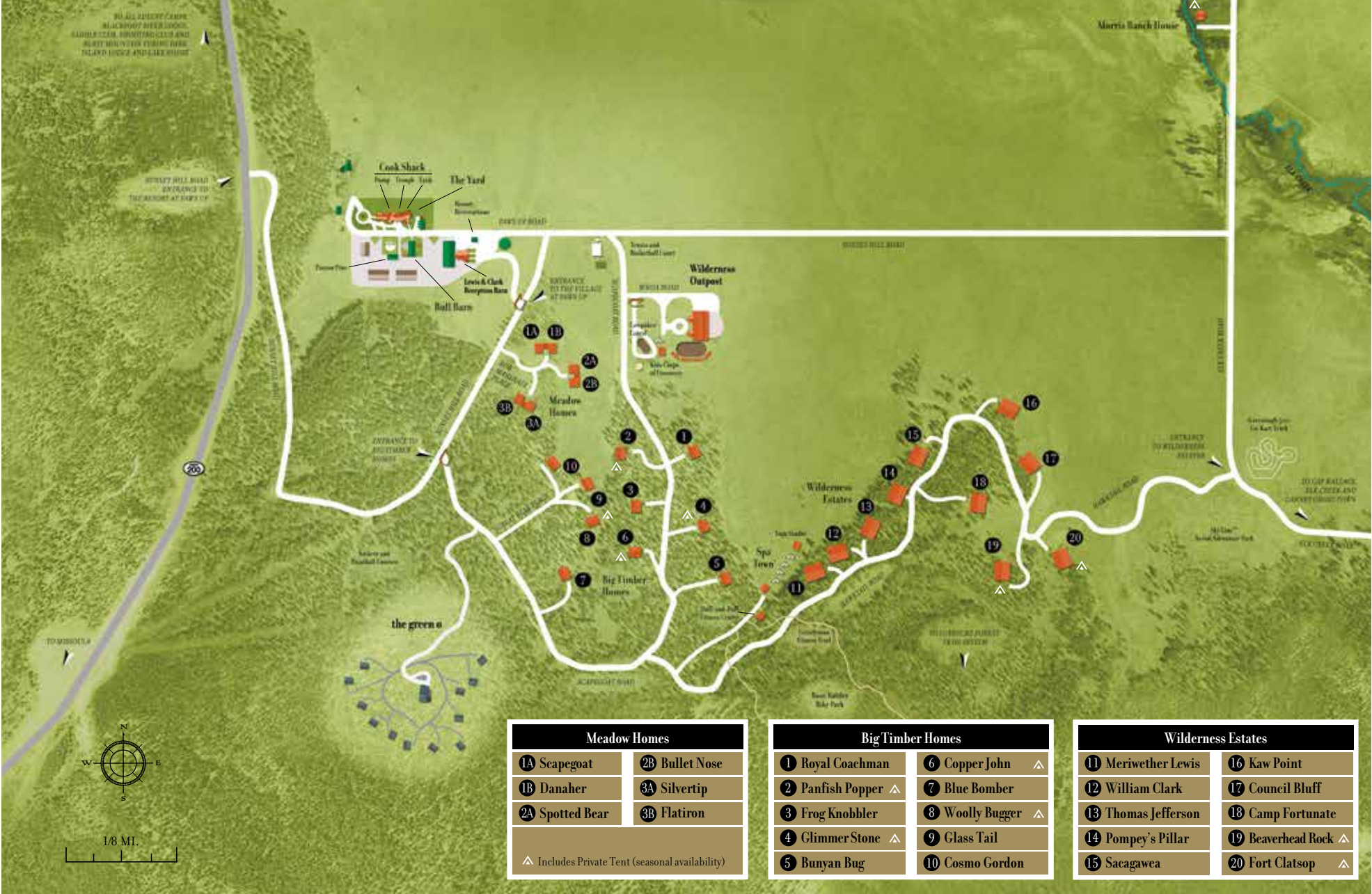
Can I stay connected at Paws Up? Yes, cell service is available throughout the entire Resort and all of the luxury homes feature complimentary Wi-Fi.

Do the luxury homes have views? Each home is privately nestled amongst our 37,000 acres, providing breathtaking views of the pastoral Montana countryside. The Meadow Homes, Big Timber Homes and Wilderness Estates boast views of expansive meadows, majestic timberland and a number of stately mountain ranges. The Morris Ranch House and Blackfoot River Lodge feature their respective views of Elk Creek and the Blackfoot River.

Does Paws Up have a main lodge with individual rooms? In an effort to provide our guests with the ultimate in privacy and luxury, The Resort at Paws Up does not offer a lodge with individual rooms. We believe that rooms and suites are for city hotels. When you come to Montana, you and your family deserve to spread out in your very own home away from home.

How do we communicate with Concierge Services when we're in our home? Whether you're making dining reservations, booking wilderness activities or arranging for transportation, the Paws Up App will provide a high level of convenience and accessibility, enhancing the quality and enjoyment of your stay at *The Last Best Place*. You can download the free Paws Up App from Apple's App Store or Google Play.

THE VILLAGE AT PAWS UP



WILDERNESS ESTATES AT PAWS UP





Wilderness Estate





4 0 0 6 0 P A W S U P R O A D G R E E N O U G H , M T 5 9 8 2 3
8 0 0 - 4 7 3 - 0 6 0 1 T H E R E S O R T @ P A W S U P . C O M W W W . P A W S U P . C O M



PAWS UP, THE LAST BEST PLACE, THE RESORT AT PAWS UP, SPA TOWN and the Paw Design are trademarks of licensors of Paws Up Ranch LLC, used under license. © 2020 The Last Best Beef LLC. All rights reserved.
TRIP ADVISOR, ANDREW HARPER, SIGNATURE TRAVEL NETWORK, FORBES, VIRTUOSO, LEXUS, TRAVELLER MADE and Design are trademarks of their respective owners.

