

Group Venues and Dining Options at Paws Up[®]

Greenough, MT | Established in 2005

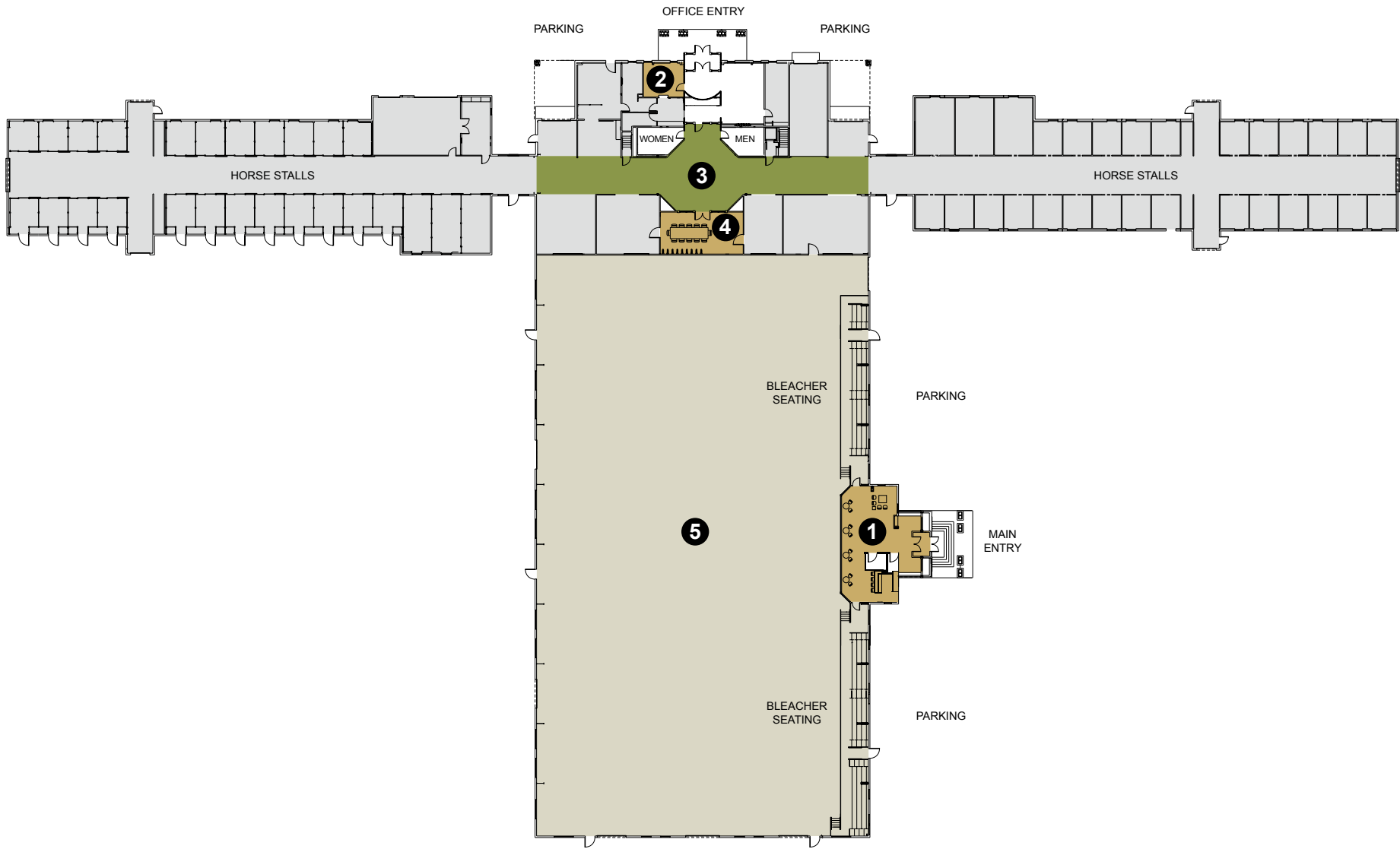


The Saddle Club

The Saddle Club at Paws Up® is Montana's premier Equestrian Center, with a 34,300-square-foot arena in addition to several meeting and event spaces. Built in 1999, the Saddle Club houses the resident horses at Paws Up and is the largest private Equestrian Center in the state.

75,000 SqF

The Saddle Club



Key and Capacities		Square Footage	Dimensions (L x W)	Theater	Classroom	U-Shape	Hollow Square	Conference	Banquet	Reception
	The Saddle Club	75,000								
1	Sky Box	1,058	36 x 23	30	20	16	20	10	16	30
2	Boardroom	238	17 x 14	–	–	–	8	–	–	–
3	Grand Hall	5,600	140 x 40	50	40	30	30	30	110	110
4	Tack Room	648	36 x 18	–	–	–	–	20	16	30
5	Arena	34,300	245 x 140	300	300	–	–	–	400	400

The Saddle Club

Sky Box

Leather chairs. A fully stocked, built-in bar. And the best seats in the house. The Sky Box provides an exclusive VIP setting overlooking the equestrian action in the arena below. It's the ideal spot to kick off a welcome reception before you enjoy a delicious dinner in the Grand Hall.

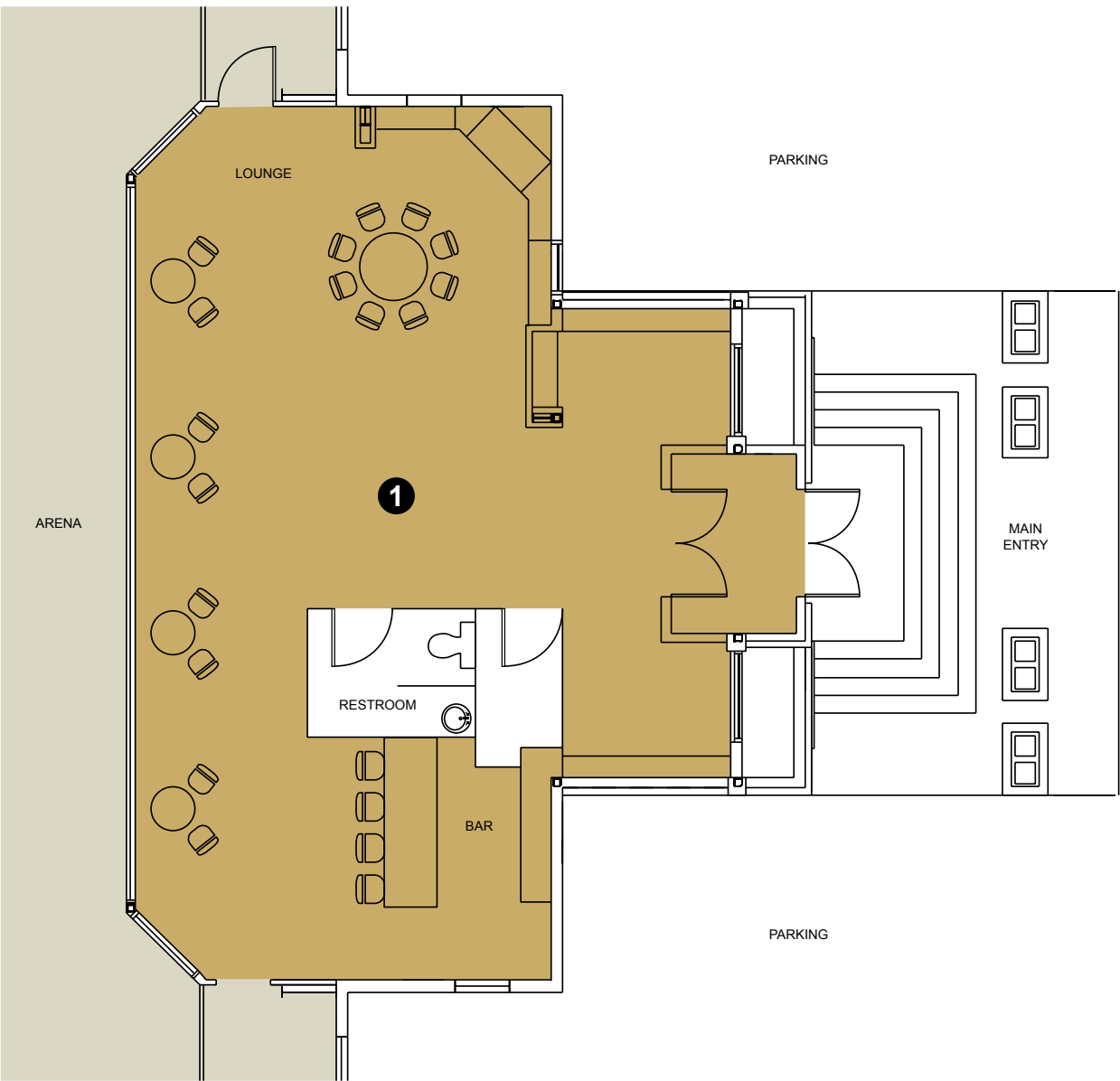
1,058 SqF

46L x 23W



The Saddle Club

Sky Box



Key and Capacities		Square Footage	Dimensions (L x W)	Theater	Classroom	U-Shape	Hollow Square	Conference	Banquet	Reception
	The Saddle Club	75,000								
1	Sky Box	1,058	36 x 23	30	20	16	20	10	16	30

The Saddle Club

The Arena

Paws Up's Equestrian Center is one of the finest in Montana and home to our resident horses. This authentic ranch building houses a 34,300-square-foot arena that accommodates mustang demos, equestrian experiences and more interactive adventures that make this an unforgettable group venue.

34,300 SqF

245L x 140W





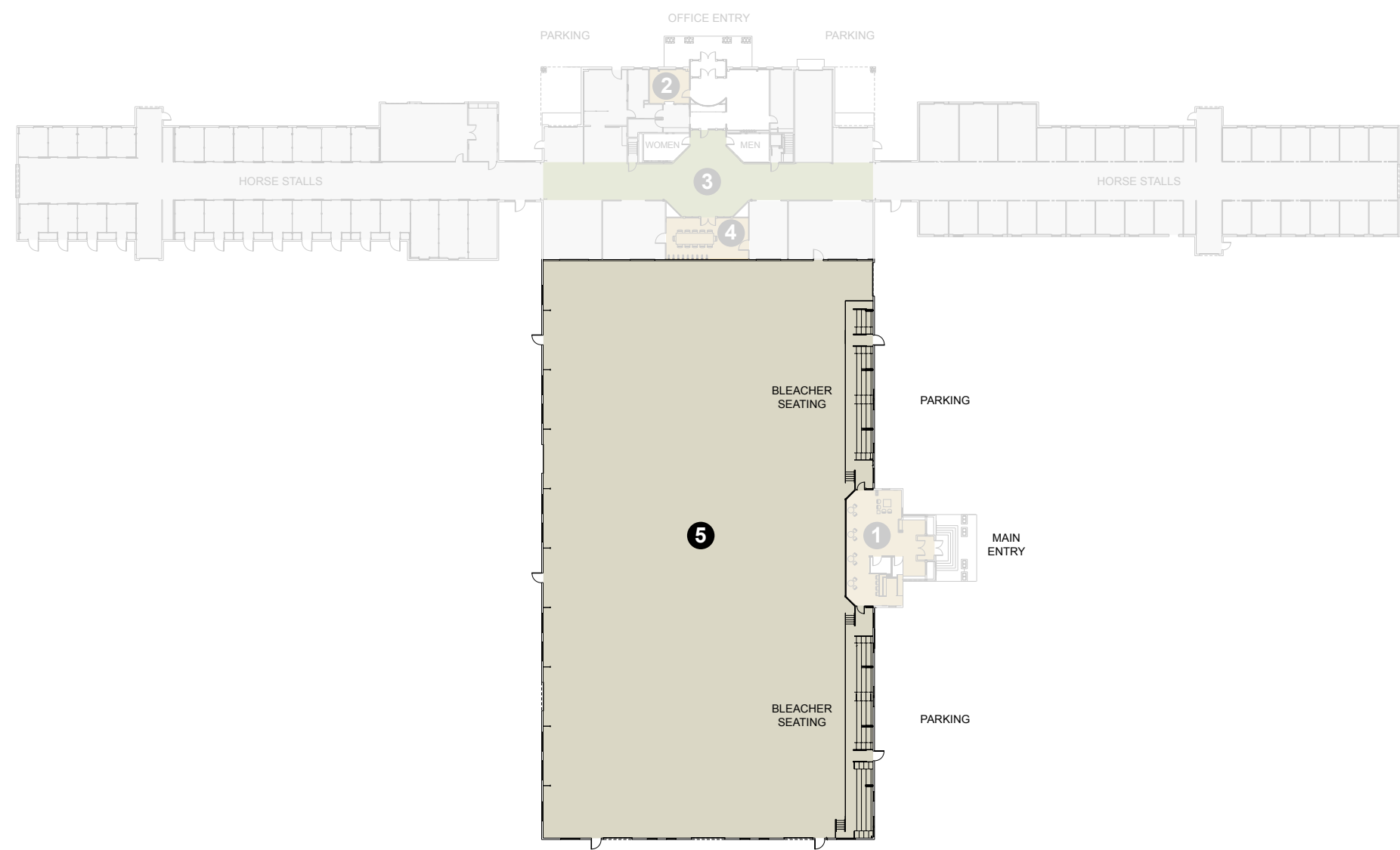
 PAWS UP

LEADER	TIME/ SCORE
	:
	:
CONTESTANT	TIME/ SCORE
	:
	:

The Arena

The Saddle Club

The Arena



Key and Capacities		Square Footage	Dimensions (L x W)	Theater	Classroom	U-Shape	Hollow Square	Conference	Banquet	Reception
5	Arena	34,300	245 x 140	300	300	—	—	—	400	400

The image shows the interior of a rustic tack room. The walls are made of vertical wood planks. On the right wall, several leather saddles with colorful saddle pads are hanging. A large, multi-bulb chandelier made of antlers hangs from the ceiling. In the center, there is a long wooden table with a rustic, weathered appearance. On the table, there are several lanterns and a few bottles. Behind the table, there is a wooden counter or bar area with more bottles and a lamp. To the left of the counter, there is a wooden cabinet or storage unit. The floor is covered with a large, patterned rug. The overall atmosphere is warm and rustic.

The Saddle Club Tack Room

Just off the arena sits the Tack Room—a warm, inviting space that captures the equestrian nature of Montana. Leather saddles and tack line the walls as candelabras line the tables. It's a versatile space that can be calming and cozy as well as lively and spirited, much like the horses next door in the arena.

648 SqF

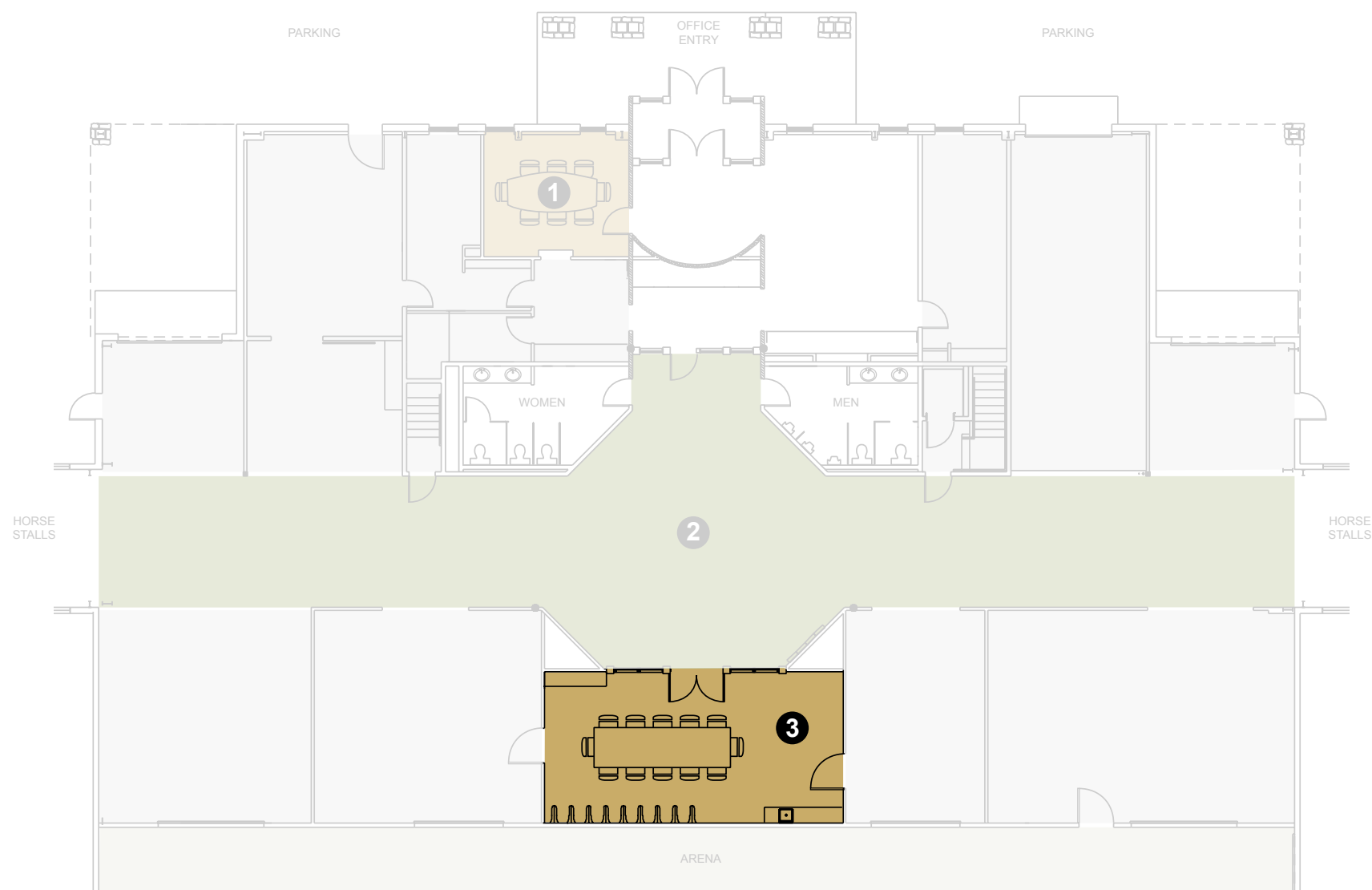
36L x 18W

Tack Room



The Saddle Club

Tack Room



Key and Capacities		Square Footage	Dimensions (L x W)	Theater	Classroom	U-Shape	Hollow Square	Conference	Banquet	Reception
3	Tack Room	648	36 x 18	–	–	–	–	20	16	30

The Saddle Club Grand Hall

A grand hall calls for a grand table, and the Saddle Club Grand Hall has one. The hall runs the length of the Saddle Club Equestrian Center, and the table does too, setting the stage for a beautifully elegant event. Natural pine walls lend a warmth as unique light fixtures dance from the ceiling.

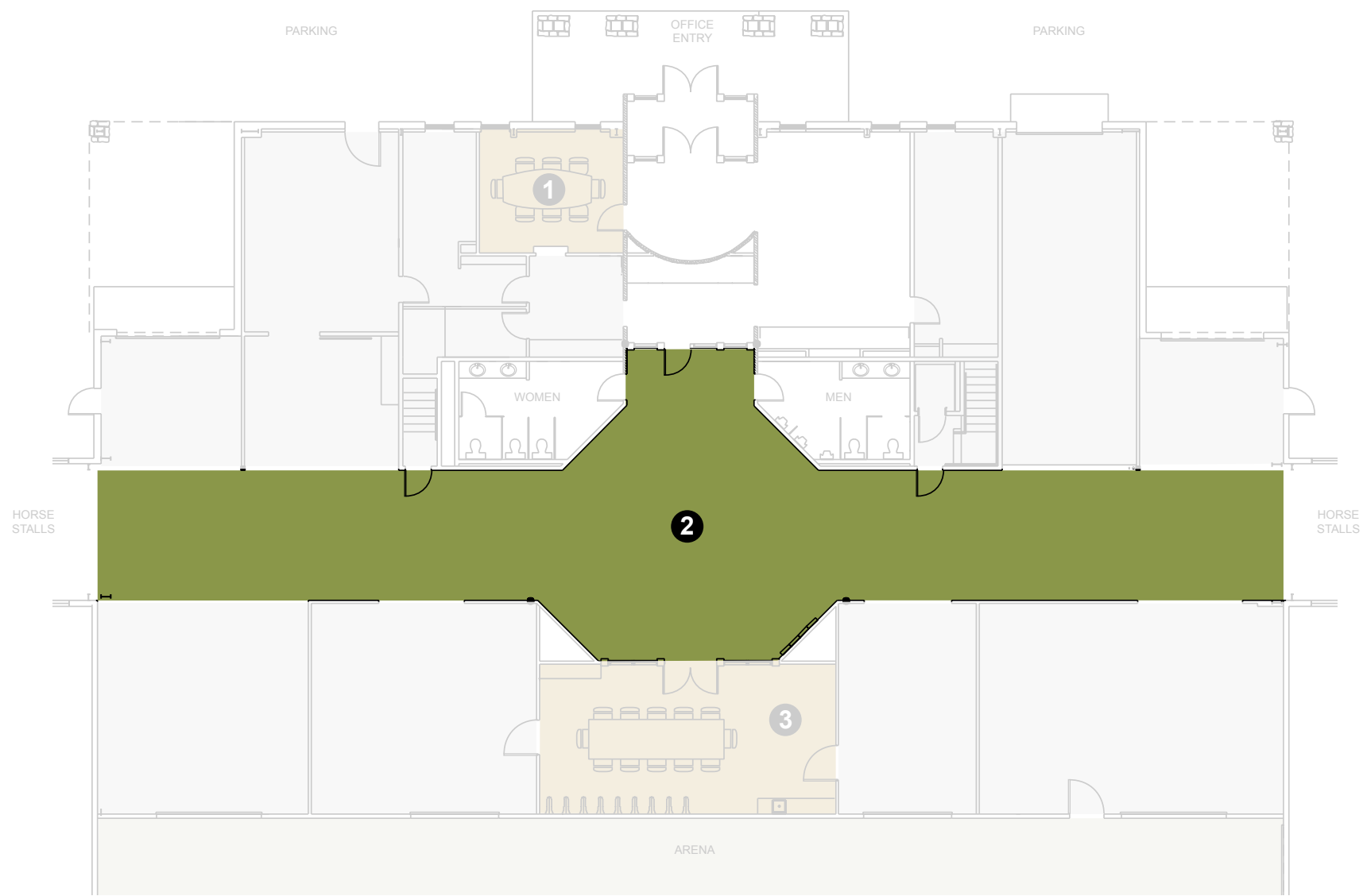
5,600 SqF

140L x 40W



The Saddle Club

Grand Hall



Key and Capacities		Square Footage	Dimensions (L x W)	Theater	Classroom	U-Shape	Hollow Square	Conference	Banquet	Reception
2	Grand Hall	5,600	140 x 40	50	40	30	30	30	110	110

The Bull Barn

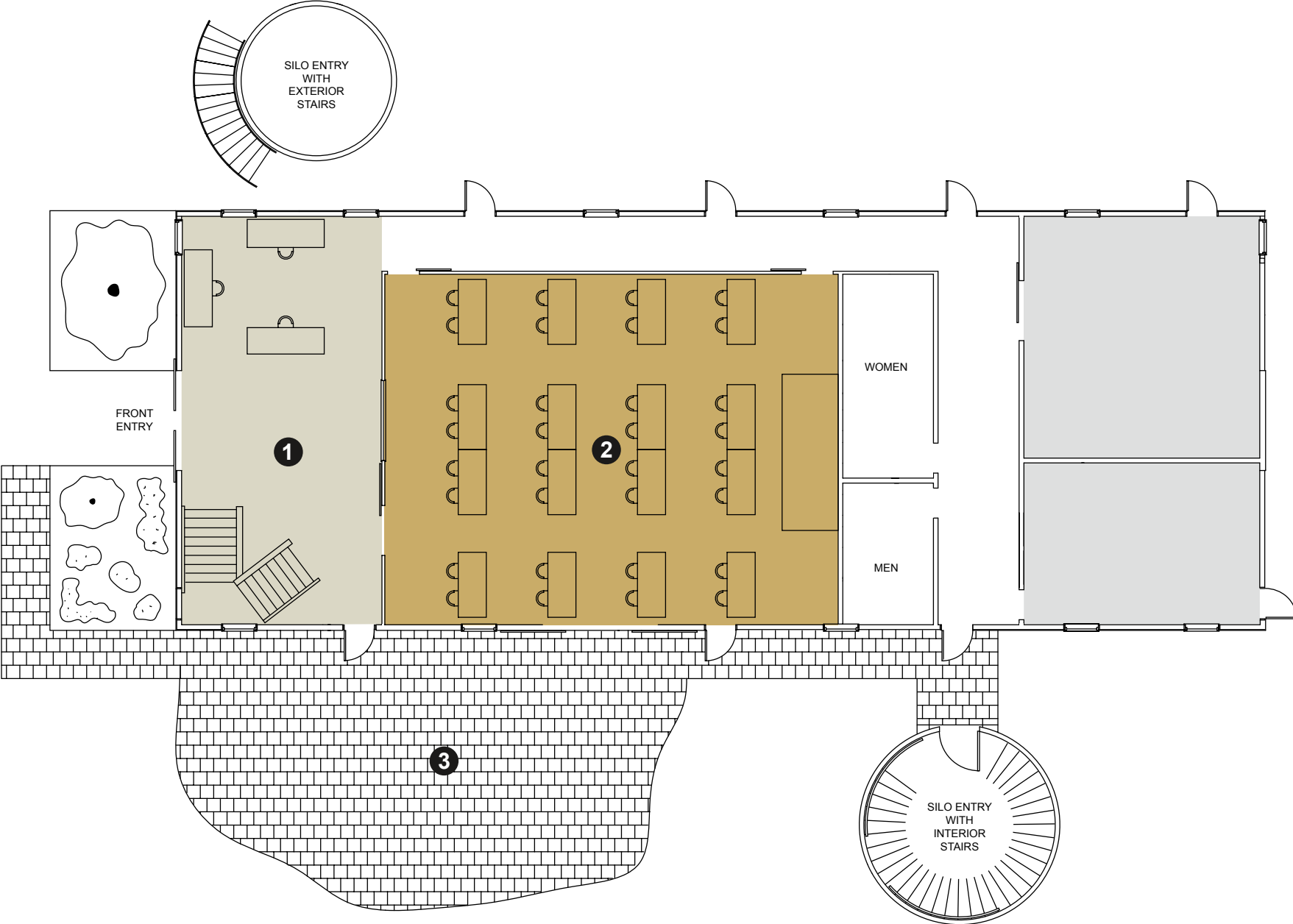
The Bull Barn is the heart and soul of The Resort at Paws Up®, and not just because it occupies a central location in the Village. It's the original barn where bulls were paraded at auction, but today it's home to some of the most authentic and charming venues for hosting memorable private events.

4,536 SqF

108L x 42W



The Bull Barn



Key and Capacities		Square Footage	Dimensions (L x W)	Theater	Classroom	U-Shape	Hollow Square	Conference	Banquet	Reception
	The Bull Barn Conference Floor	4,536	108 x 42							
1	Reception Area and Business Center	520	20 x 26	–	–	–	–	–	–	–
2	Hereford Pen	1,665	45 x 37	70	70	60	50	55	65	80
3	Bull Pen Patio	1,680	48 x 35	–	–	–	–	–	75	100

The Bull Barn

Hereford Pen

At the center of the Bull Barn's first floor, the Hereford Pen features all the charm of this 100-year-old authentic barn, seamlessly blended with the technology to carry us into the next 100 years. Large, sliding barn doors open to the Bull Barn Patio, revealing the full expanse of Paws Up.

1,665 SqF

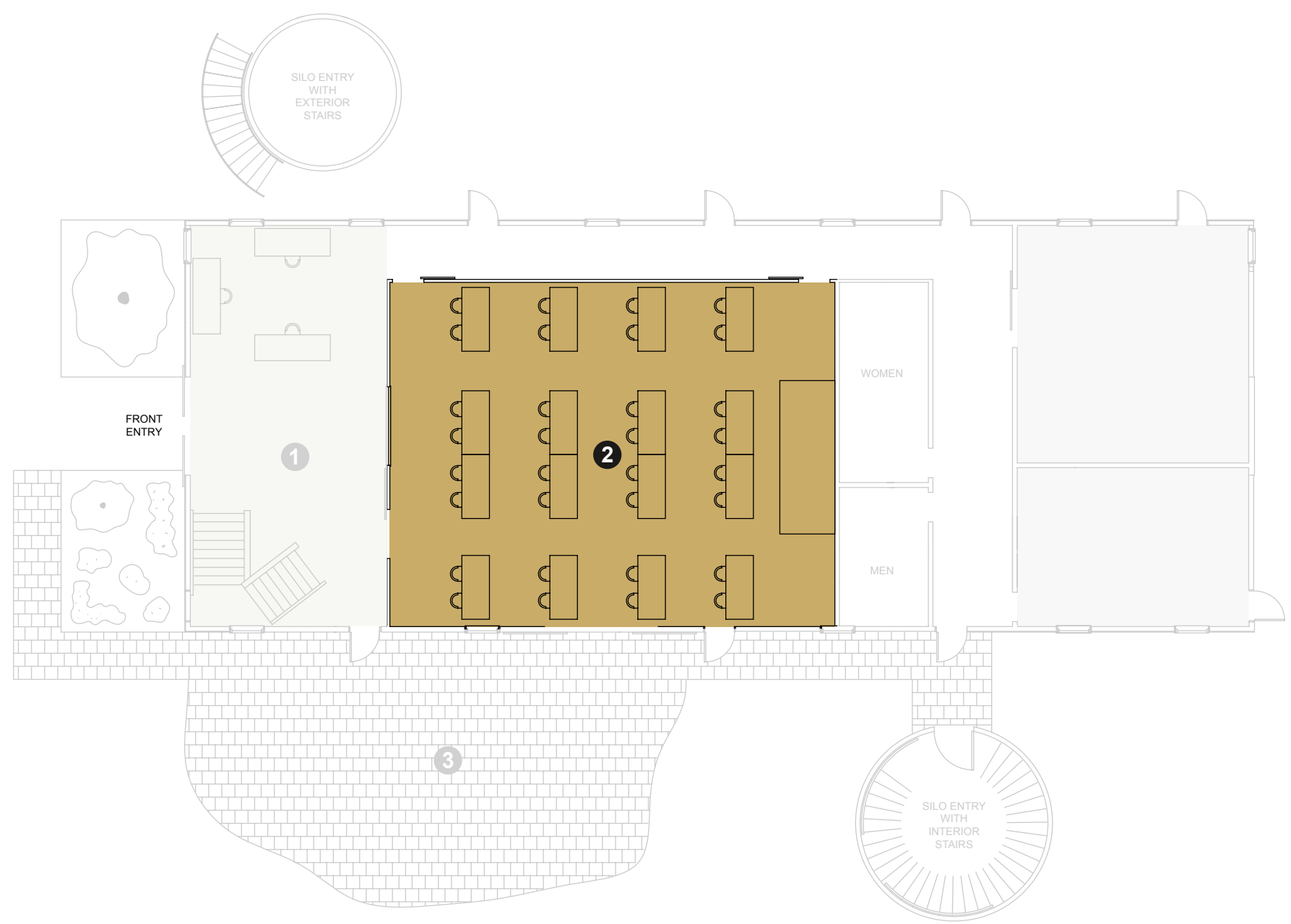
45L x 37W

Hereford Pen



The Bull Barn

Hereford Pen



Key and Capacities		Square Footage	Dimensions (L x W)	Theater	Classroom	U-Shape	Hollow Square	Conference	Banquet	Reception
2	Hereford Pen	1,665	45 x 37	70	70	60	50	55	65	80

The image shows the interior of a large, rustic barn converted into a dining hall. The space features a high, vaulted wooden ceiling with exposed beams and large, cylindrical wooden ducts. Several ornate chandeliers hang from the ceiling, along with strings of warm-toned lights and modern pendant lamps. The walls are made of horizontal wooden planks. In the background, a long wooden bar with various bottles and glasses is visible. The floor is made of wide wooden planks. Numerous round tables are set up throughout the room, each covered with a patterned tablecloth and white linens. The tables are surrounded by a mix of wooden chairs and upholstered chairs with dark frames. Some tables have small floral centerpieces. The overall atmosphere is warm and elegant, blending rustic and modern decor.

The Bull Barn

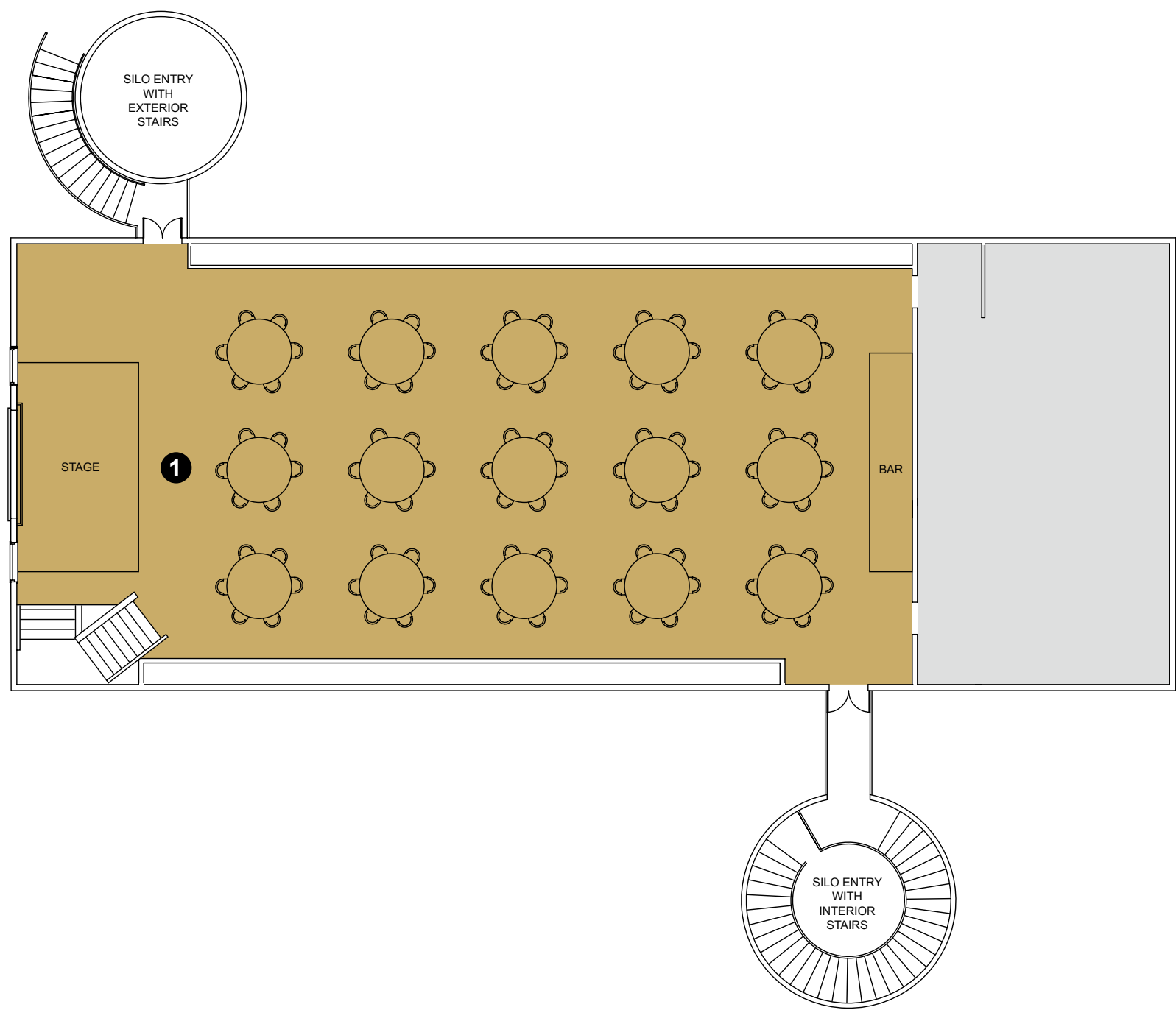
Great Angus Hall

The original vaulted timbers and expansive 3,145 square feet make any event appropriately momentous here. On the top floor of the barn that used to house the majestic sires of our Black Angus herd, the rustic pine wood and dramatic chandeliers lend a natural elegance to your wedding, reception or social gathering, with opportunities for large and small groups alike.

3,145 SqF
85L x 37W

The Bull Barn

Great Angus Hall



Key and Capacities		Square Footage	Dimensions (L x W)	Theater	Classroom	U-Shape	Hollow Square	Conference	Banquet	Reception
	The Bull Barn Second Floor	4,536	108 x 42							
1	Great Angus Hall	3,145	85 x 37	175	150	100	85	85	160	200



The Cook Shack

Centrally located in the Village at Paws Up, the Cook Shack is, admittedly, much more than a shack. Home to two restaurants and a bar, as well as a meeting space, the Cook Shack and our executive chef offer up culinary creations that celebrate Montana and the Ranch at Paws Up.

7,243 SqF

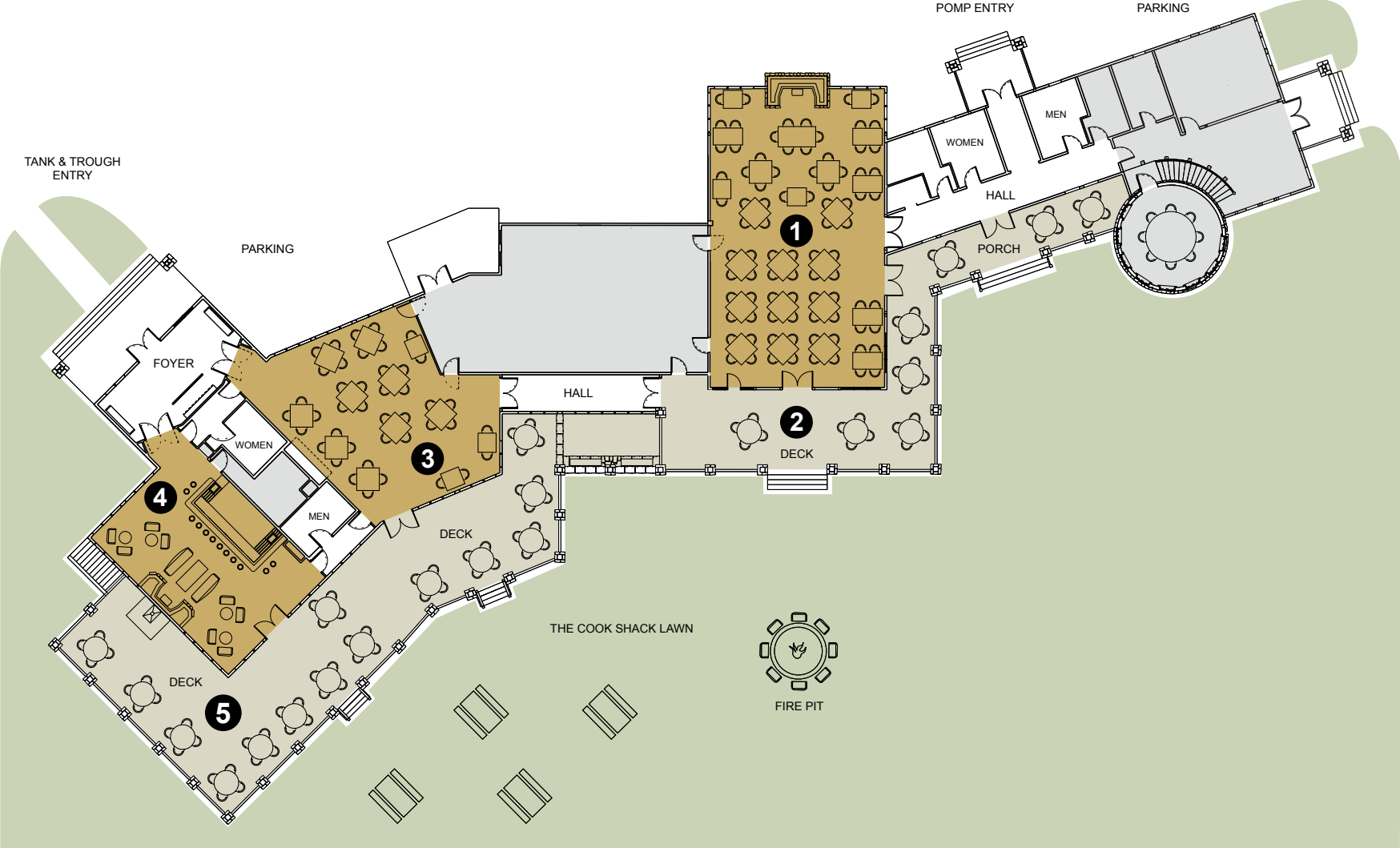


The Cook Shack

The Yard

Whether you're after an al fresco dining experience or an Angus burger between rounds of horseshoes, The Yard can accommodate. The Montana air and breathtaking views add unmatched flavor to your culinary adventure, making the meal and your event unforgettable.

The Cook Shack



Key and Capacities		Square Footage	Dimensions (L x W)	Theater	Classroom	U-Shape	Hollow Square	Conference	Banquet	Reception
	The Cook Shack	7,243								
1	Pomp	2,100	60 x 35	65	60	24	30	30	80	150
2	Pomp - Exterior Deck	1,575	–	–	–	–	–	–	100	75
3	Trough	1,512	36 x 42	66	50	30	40	30	66	115
4	Tank	1,131	29 x 39	–	–	–	–	–	–	50
5	Tank & Trough - Exterior Deck	2,560	–	–	–	–	–	–	55	125

The Cook Shack

Pomp®

Pomp is the fine-dining restaurant at the Cook Shack, available for select private events during breakfast and lunch. Refined ranch cuisine features local ingredients, often from Paws Up itself, so the menu changes with the seasons. An oversized hearth is the centerpiece of the restaurant, but the culinary innovations are the showpiece.

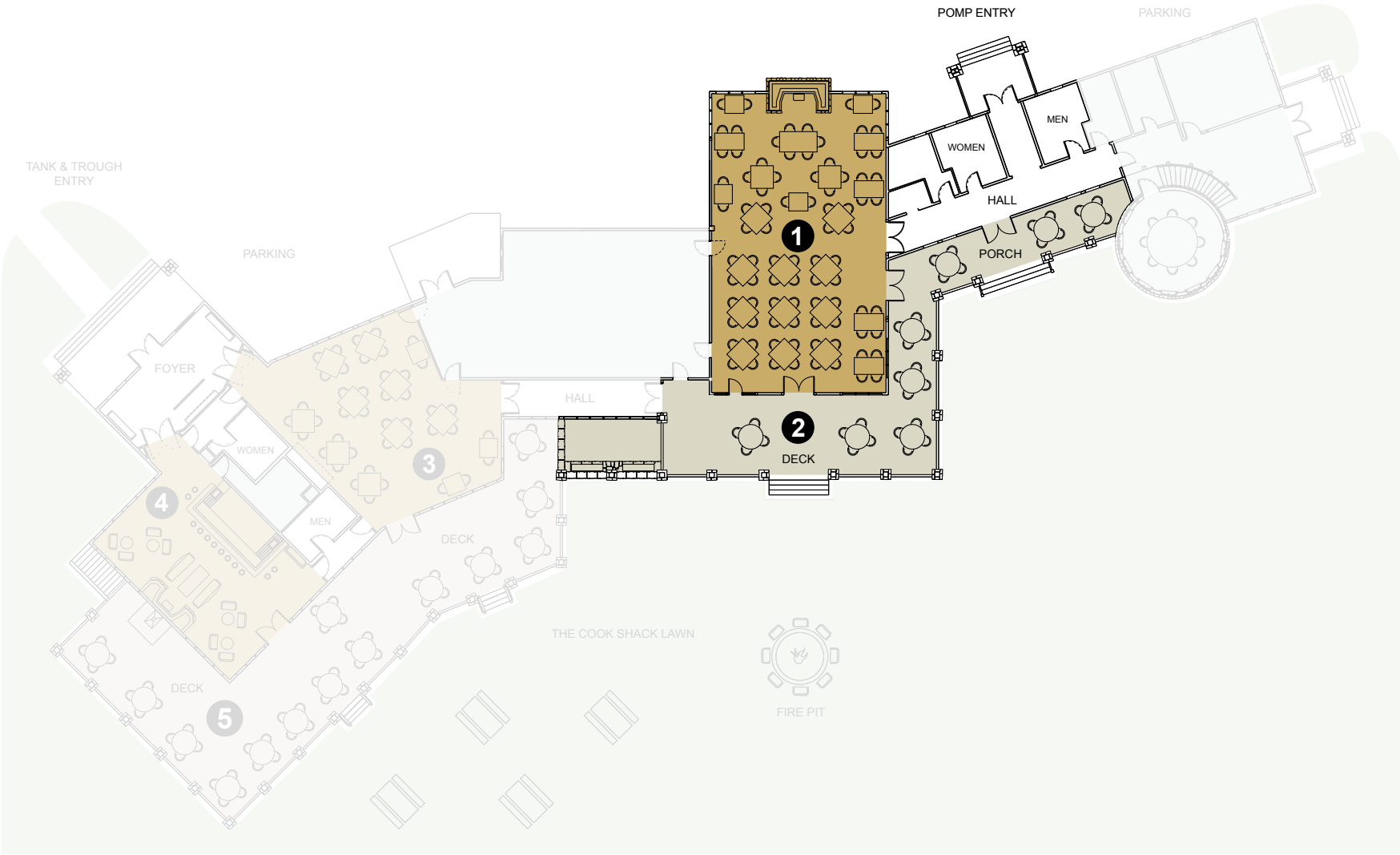
2,100 SqF

60L x 35W



The Cook Shack

Pomp



Key and Capacities		Square Footage	Dimensions (L x W)	Theater	Classroom	U-Shape	Hollow Square	Conference	Banquet	Reception
1	Pomp	2,100	60 x 35	65	60	24	30	30	80	150
2	Pomp - Exterior Deck	1,575	—	—	—	—	—	—	100	75



The Cook Shack Trough

Paws Up's casual dining restaurant, Trough, features rustic, yet refined offerings. Home-cooked flavors with a Western flair include everything from huckleberry pancakes to locally sourced meats in a laid-back setting, featuring canvas tent walls that flow seamlessly from indoors to the patio and further out into The Yard. Trough is available to host private dinners.

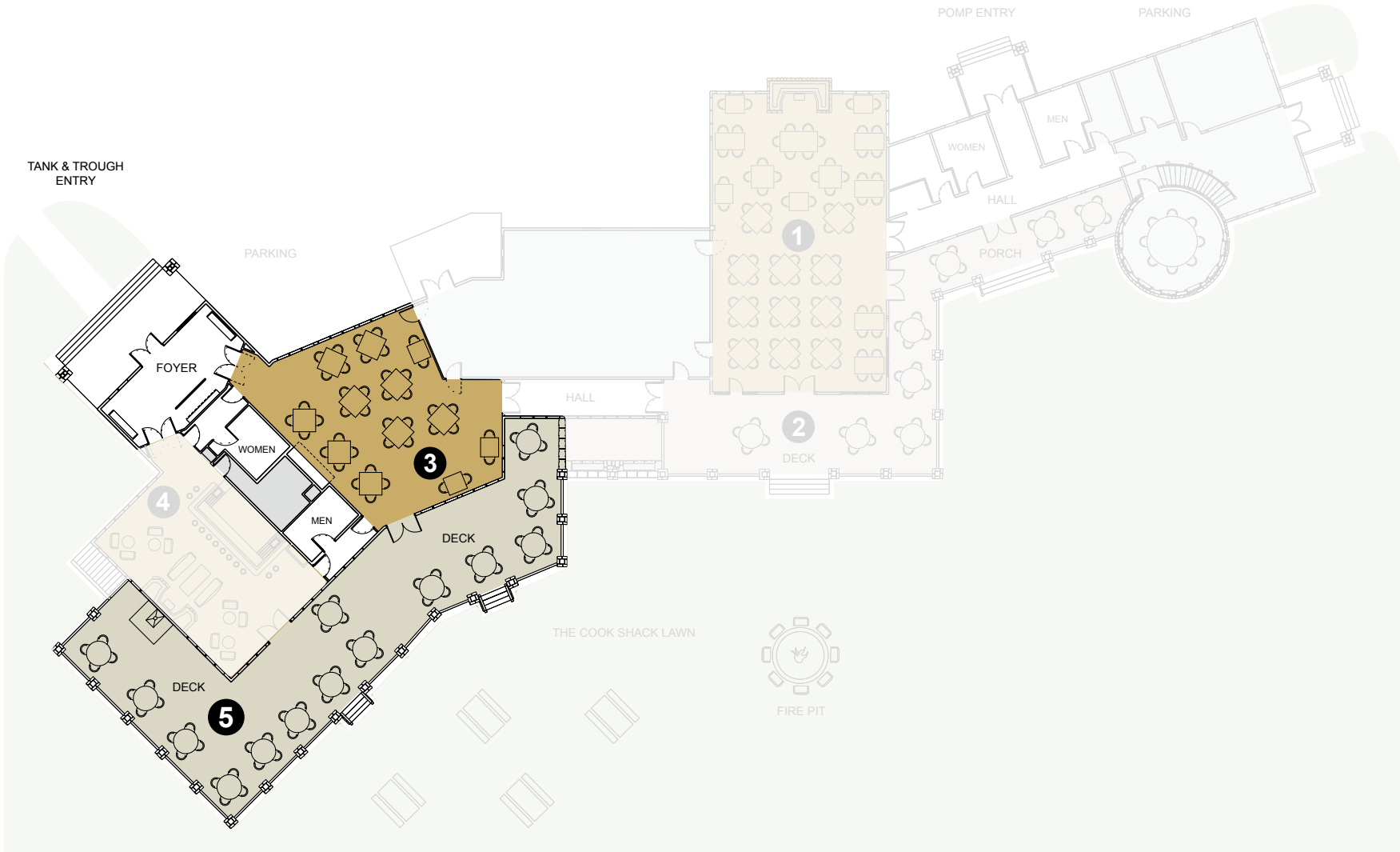
1,512 SqF
36L x 42W



Tank & Trough Exterior Deck
2,560 SqF

The Cook Shack

Trough



Key and Capacities		Square Footage	Dimensions (L x W)	Theater	Classroom	U-Shape	Hollow Square	Conference	Banquet	Reception
3	Trough	1,512	36 x 42	66	50	30	40	30	66	115
5	Tank & Trough - Exterior Deck	2,560	—	—	—	—	—	—	55	125

The Cook Shack Tank

Tank is everything you want in a full-service luxury cocktail bar. The finest drink selections. Sophisticated leather chairs to sink into. And breathtaking views to get lost in. Whether you've just finished a day of adventure or meetings, it's the perfect spot to unwind.

1,131 SqF

29L x 39W

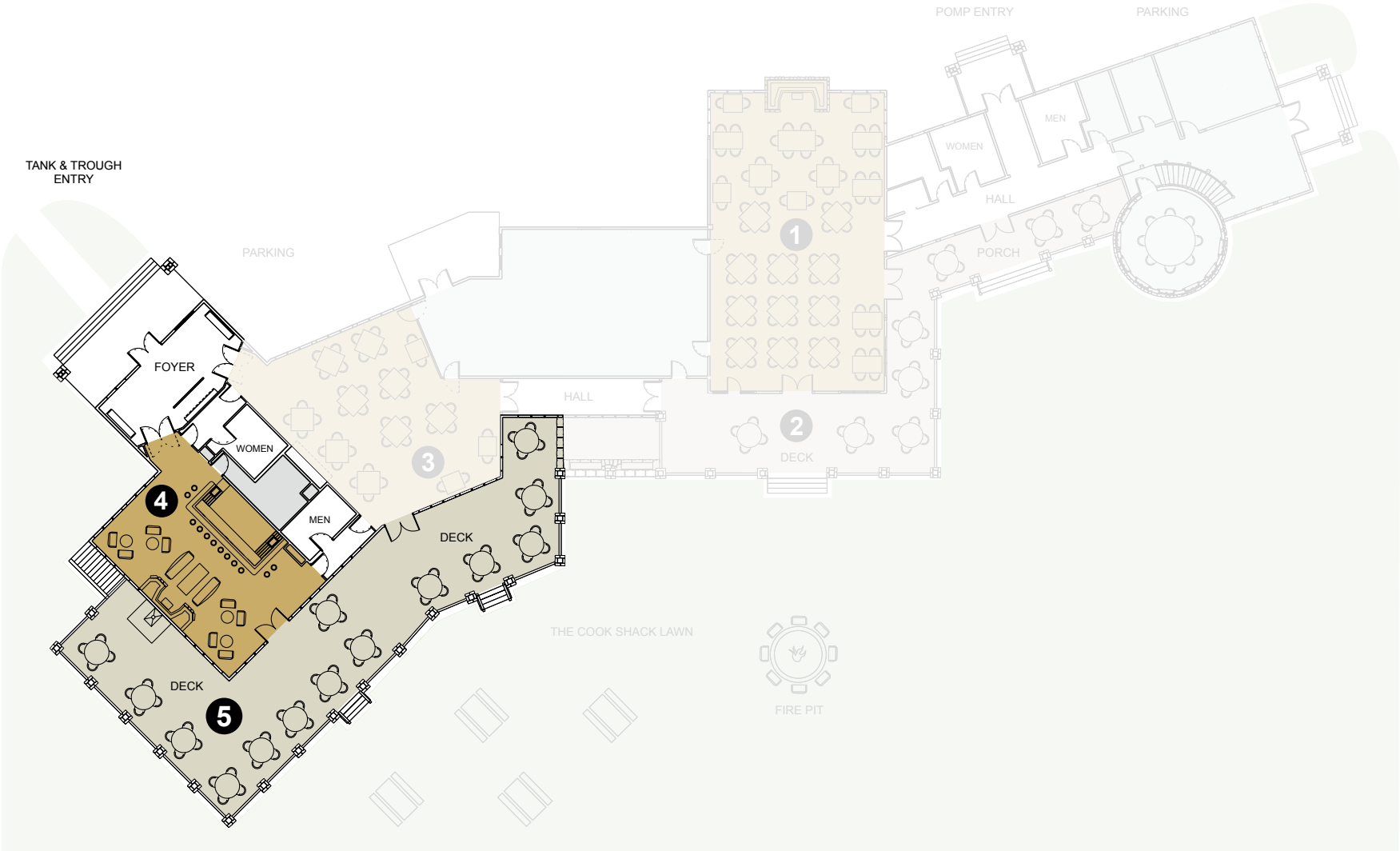


Tank



The Cook Shack

Tank



Key and Capacities		Square Footage	Dimensions (L x W)	Theater	Classroom	U-Shape	Hollow Square	Conference	Banquet	Reception
4	Tank	1,131	29 x 39	–	–	–	–	–	–	50
5	Tank & Trough - Exterior Deck	2,560	–	–	–	–	–	–	55	125

The Lewis & Clark Reception Barn

If 37,000 acres can have a front desk, this is ours. The Lewis & Clark Reception Barn provides a warm welcome for all attendees. It's centrally located within the Village at Paws Up, and guests can relax in the inviting lobby or play a game of pool before heading to their accommodations. The hall also houses an auditorium with a professional sound system and permanent stage for presentations and performances.

9,240 SqF

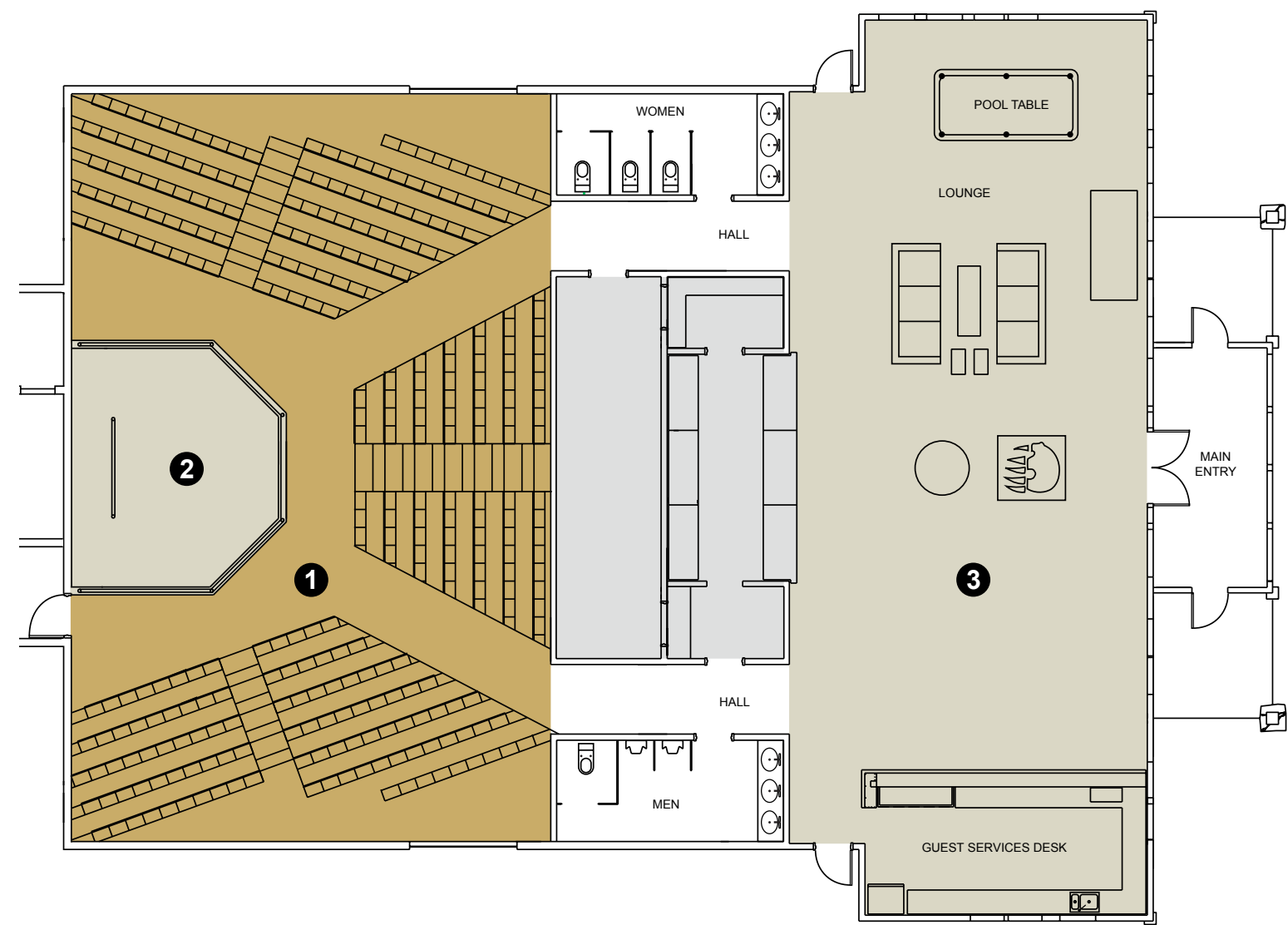
70L x 132W



The Lewis & Clark Reception Barn



The Lewis & Clark Reception Barn



Key and Capacities		Square Footage	Dimensions (L x W)	Theater	Classroom	U-Shape	Hollow Square	Conference	Banquet	Reception
	Lewis & Clark Reception Barn	9,240	70 x 132							
1	Auditorium	2,560	40 x 64	200	–	–	–	–	20	100
2	Stage	360	18 x 20	–	–	–	–	10	–	–
3	Lobby	2,040	30 x 68	–	–	–	–	–	–	100



The Social Haus

Exclusive for guests of the green o, the Social Haus features an open kitchen and floor-to-ceiling windows, creating an atmosphere ripe for taking in big skies and even bigger thinking. Whether it's a group meal, one-on-one conversations or cocktails, the Social Haus provides a one-of-a-kind setting that sets the mood.

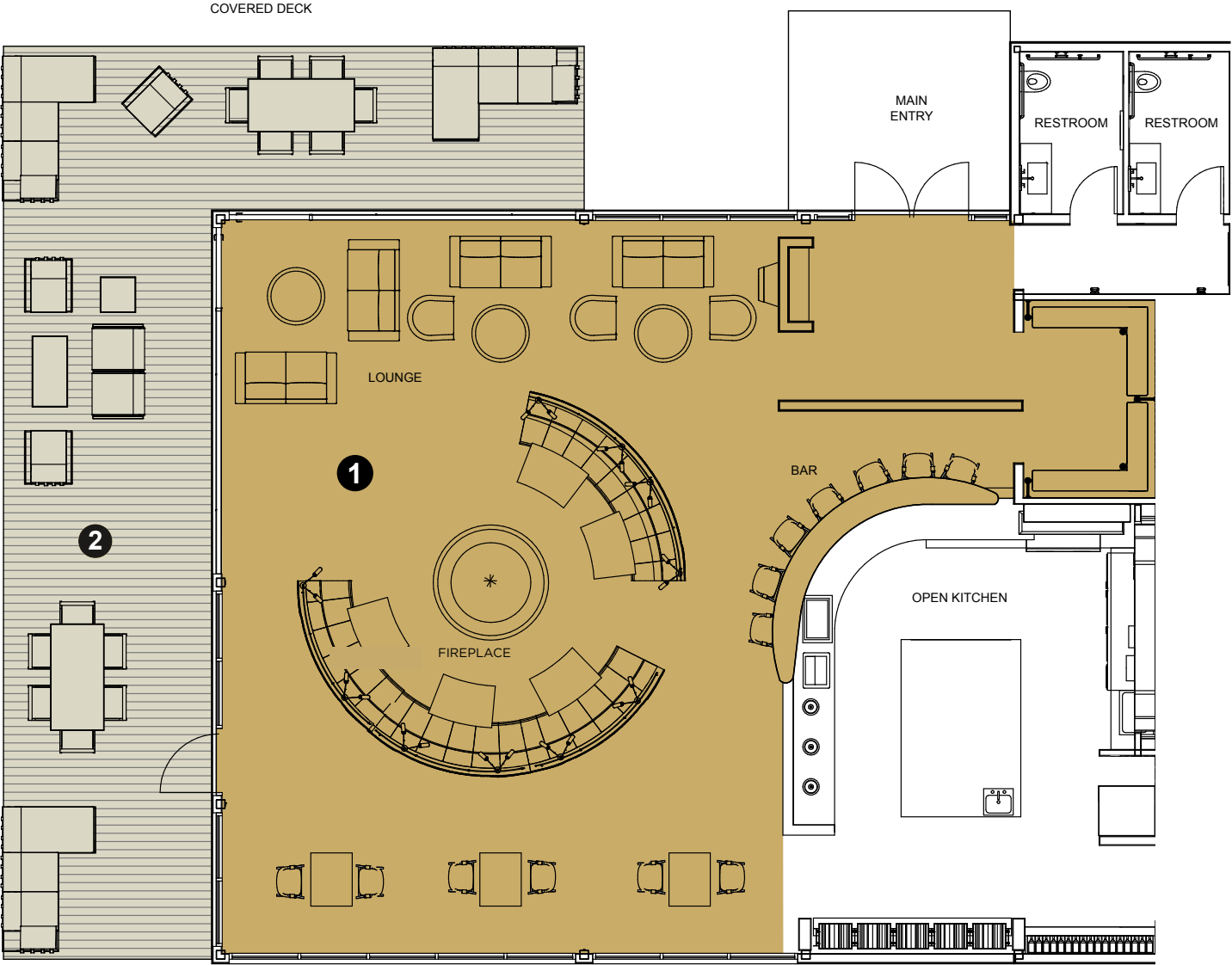
2,745 SqF

61L x 45W



The Social Haus

The Social Haus



Key and Capacities		Square Footage	Dimensions (L x W)	Theater	Classroom	U-Shape	Hollow Square	Conference	Banquet	Reception
	the green o – The Social Haus	2,745	61 x 45							
1	Dining Room	1,980	44 x 45	–	–	–	–	–	–	–
2	Covered Deck	680	17 x 40	–	–	–	–	–	–	–



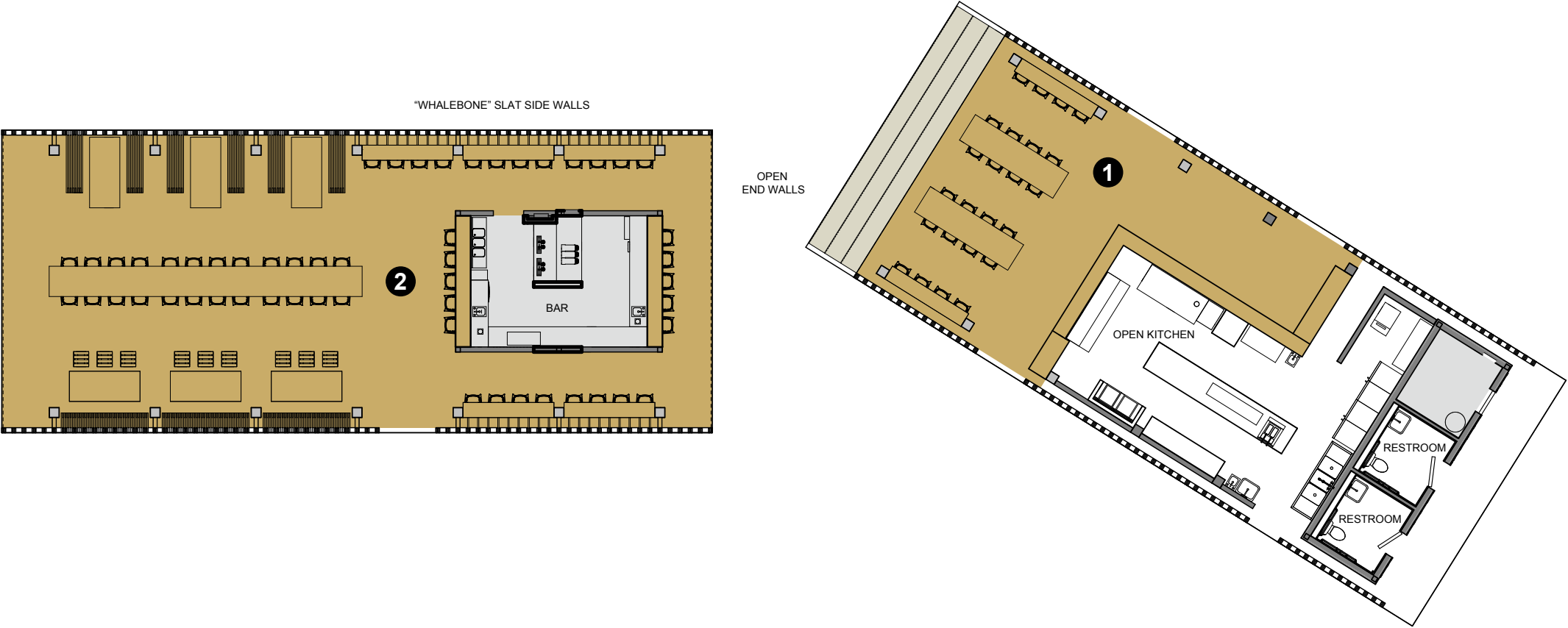
Shed[®]

It started out as a food truck. Now it's a Shed. What sounds humble is actually quite grand. The arching pine beams that make up Shed create beautiful shade and shadows, while the 250-gallon smoker and six-foot stone hearth create beautifully savory flavors. Open air and open concept. Shed is nature's food court and an idyllic place for your group meal, meeting or event.

4,015 SqF



Shed®



Shed is a seasonal dining venue, open during the summer months.

Key and Capacities		Square Footage	Dimensions (L x W)	Theater	Classroom	U-Shape	Hollow Square	Conference	Banquet	Reception
	Shed®	4,015								
1	Shed A	2,100	30 x 70	–	–	–	–	–	–	–
2	Shed B	1,915	29 x 66	–	–	–	–	–	–	–

An aerial photograph of a large, rustic wooden lodge with a brown roof, situated on a small island in the middle of a deep blue lake. The lodge is surrounded by tall, green pine trees. The lake's surface is dark and reflects the sky. In the background, there are forested hills and a clear blue sky with some light clouds. The overall scene is serene and remote.

The Island Lodge

Remote and hidden amongst infinite pine trees, the Island Lodge at Salmon Lake is a hidden treasure. You'll discover an island butler and a chef there. The Lodge provides an inviting, intimate atmosphere for dinners, small group discussions and big thinking.



The Island Lodge



The Picnic Site

Every great event needs a great space. And on the banks of the meandering Blackfoot River sits one of the most magical spaces you could imagine. It's perfect, whether you're planning an al fresco, white-linen group dinner under the Montana sky, a wedding ceremony or a fly-fishing demo. You dream it and Paws Up and the Montana wilderness will bring it to life.



The Chuck Wagon

You'll be transported to the banks of the Blackfoot River, as well as back in time, for a chuck wagon dinner. Tomahawk steaks, cedar plank salmon, huckleberry cobbler and, of course, s'mores are all prepared over an open fire. It will give you a taste of the homesteader life. The very, very good homesteader life.



The Chuck Wagon

A photograph of a camp dining pavilion at dusk. In the foreground, a fire pit with a bright fire is surrounded by several wooden Adirondack chairs. In the background, a large, open-air pavilion with a stone fireplace and striped curtains is illuminated from within. The pavilion is surrounded by tall evergreen trees. The sky is dark with some clouds.

Camp Dining Pavilions

For those enjoying Paws Up's glamping experience, these pavilions can be made exclusive to your group. Here, Paws Up takes the open kitchen concept to a whole new level. Each glamping site has its own dedicated, highly trained chef who prepares everything in our open-air pavilions in full view of guests. These pavilions can be made available for exclusive group use, whether breaking bread together or breaking down this quarter's numbers.



Camp Dining Pavilions



Culinary Vision

When your General Manager of Food and Beverage is Chef Sunny Jin, who cut his teeth at award-winning fine dining restaurants like The French Laundry and El Bulli, event dining is far from typical. Gourmet food is just the beginning, with every detail designed exclusively for your group. Whether it's breakfast, a barbecue or black tie, expect memorable meals in unexpected venues at The Resort at Paws Up.

