





LUXURY CAMPING

There's nothing like sleeping under the stars, listening to nature and calling your butler when you need an extra pillow. The Resort at Paws Up® is North America's premier glamping® destination, featuring



six luxury tented camps that cater to families, couples and groups. Each safari-style tent features fine linens, *The Last Best Bed*®, chic

rustic furnishings, art-adorned walls, electricity, air conditioning, heat and, most importantly, a camping butler at your beck and call. Refresh yourself in your private master bathroom with a Montana-sized rain shower, jetted tub, heated floors and indulgent organic spa products. Your skilled chef will bring new meaning to haute grilling as he cooks before your eyes in the camp's Dining Pavilion. Luxury camping at Paws Up is nature served on a silver platter.



Cliffside Camp

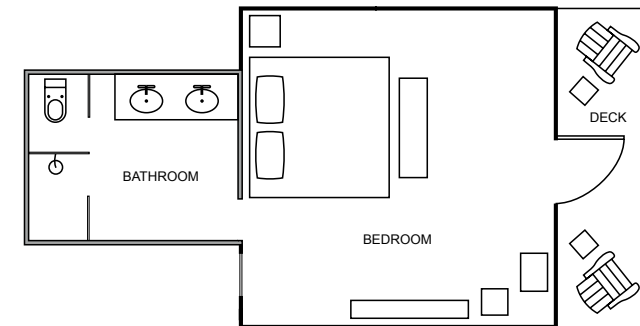
M O O N L I G H T C A M P

Moonlight Camp is a collection of six safari-style tents that allow guests to connect with the great outdoors without forgoing the creature comforts of a luxury resort. Situated at the foot of Lewis & Clark's famous Lookout Rock and just a short stroll from the mighty Blackfoot River, Moonlight Camp has an impressive array of features and amenities, including *The Last Best Bed*, private en suite bathrooms, a gorgeous Dining Pavilion that serves delectable cuisine and a camping butler who caters to your every whim.

FEATURES AND AMENITIES

- Two 605-square-foot one-bedroom tents, with full bath (sleeps two)
- One 975-square-foot two-bedroom tent, with full bath (sleeps five)
- Three 975-square-foot two-bedroom tents, with full bath (sleeps four)
- En suite bathroom with heated floor
- Electricity, air conditioning and heat
- Private deck
- A camping butler and a camp chef
- An expansive Dining Pavilion with meadow-to-mountain views
- Daily full-service housekeeping
- Nightly bonfire in a fire pit plus cocktails and s'mores
- Laundry
- Complimentary Wi-Fi in tent and Dining Pavilion
- Blackfoot River access

ONE-BEDROOM TENT WITH EN SUITE BATHROOM
605 SQUARE FEET



TWO-BEDROOM TENT WITH EN SUITE BATHROOM
975 SQUARE FEET

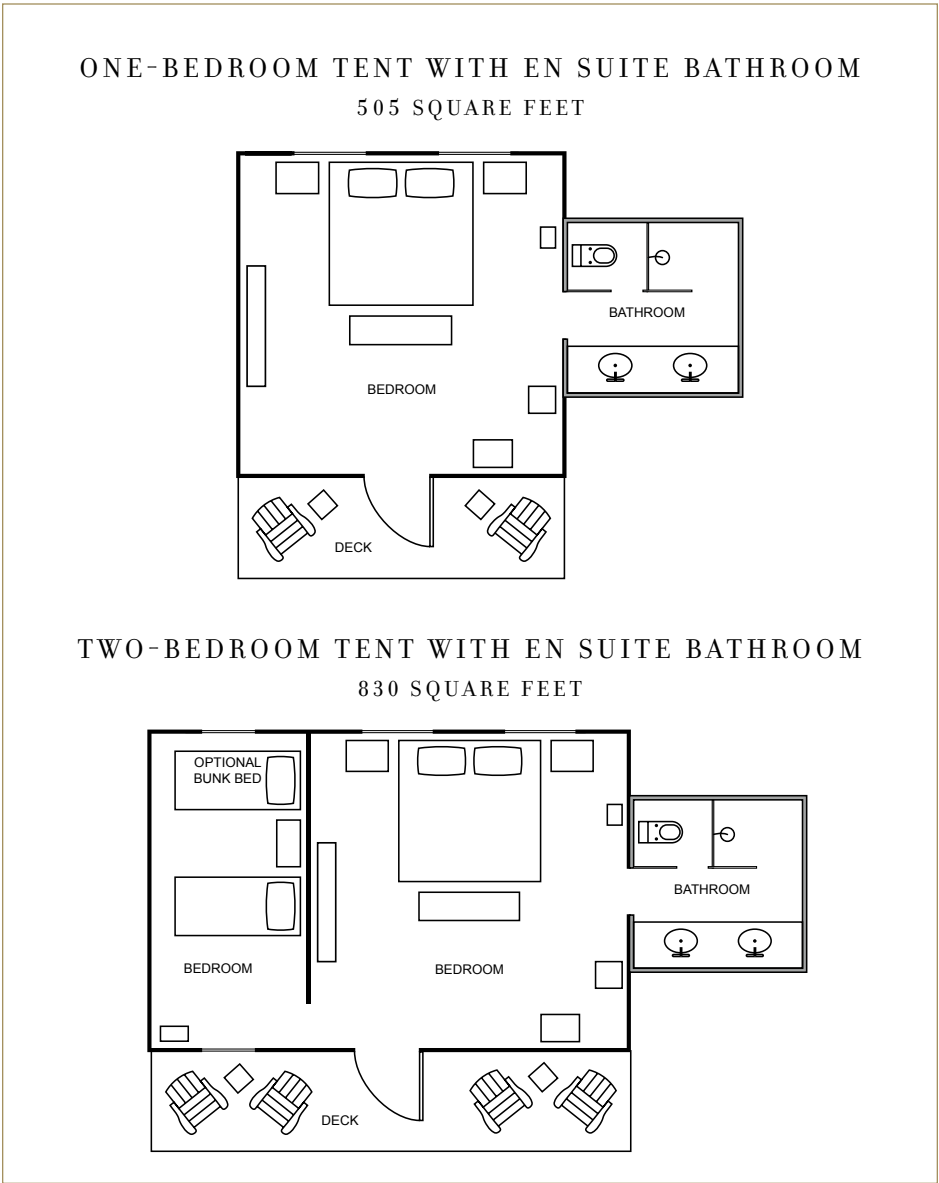


CREEKSIDE CAMP

Creekside Camp is situated on the banks of the beautiful and pastoral Elk Creek and features six spacious tent suites: four two-bedroom suites and two one-bedroom suites. Each tent comes with *The Last Best Bed* and an en suite bathroom with a two-sink vanity and a large slate shower. Creekside Camp also has an architecturally impressive Dining Pavilion with a monumental stone-and-timber fireplace, as well as an outdoor fire pit—perfect for a night of stories and s’mores. The gorgeous mountain setting of Creekside Camp will frequently remind you that you’re in *The Last Best Place*.

FEATURES AND AMENITIES

- Two 505-square-foot one-bedroom tents, with full bath (sleeps two)
- One 830-square-foot two-bedroom tent, with full bath (sleeps five)
- Three 830-square-foot two-bedroom tents, with full bath (sleeps four)
- En suite bathroom with heated floor
- Electricity, air conditioning and heat
- Private deck
- A camping butler and a camp chef
- An expansive Dining Pavilion overlooking Elk Creek
- Daily full-service housekeeping
- Nightly bonfire in a fire pit plus cocktails and s’mores
- Laundry
- Complimentary Wi-Fi in tent and Dining Pavilion



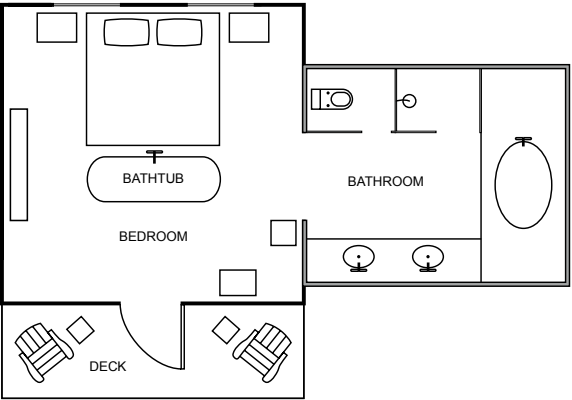
P I N N A C L E C A M P

Luxury camping has reached new heights at Pinnacle Camp. Situated on a bluff overlooking the confluence of the Blackfoot River and Elk Creek, this special camp offers one of the most breathtaking views on our 37,000-acre property. Pinnacle Camp features expansive safari-style tents (including Tango Point, an exquisite honeymoon tent) that each include an en suite bathroom with a jetted tub and shower, a plush Dining Pavilion and a myriad of luxury resort amenities.

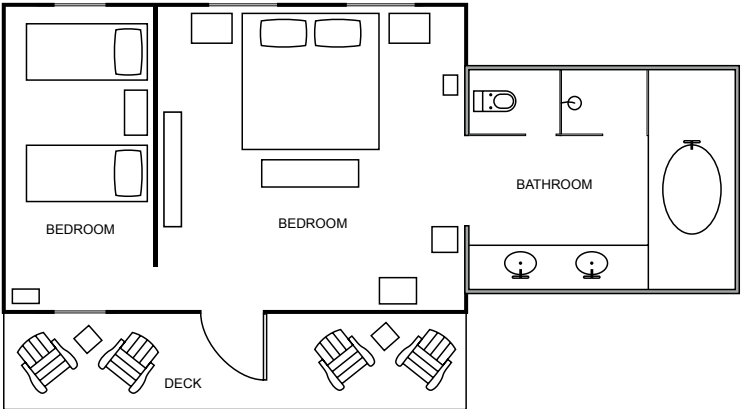
FEATURES AND AMENITIES

- Two 565-square-foot one-bedroom tents, with full bath (sleeps two)
- Four 1,030-square-foot two-bedroom tents, with full bath (sleeps four)
- En suite bathroom with heated floor
- Electricity, air conditioning and heat
- Private deck
- A camping butler and a camp chef
- An expansive Dining Pavilion with views of the Blackfoot River
- Daily full-service housekeeping
- Nightly bonfire in a fire pit plus cocktails and s'mores
- Laundry
- Complimentary Wi-Fi in tent and Dining Pavilion

ONE-BEDROOM TENT WITH EN SUITE BATHROOM
565 SQUARE FEET



TWO-BEDROOM TENT WITH EN SUITE BATHROOM
1,030 SQUARE FEET



R I V E R C A M P

Imagine camping on the banks of the legendary Blackfoot River. The soft music of the water lulls you gently to sleep while a blanket of stars twinkles overhead. Rise with the sun and cast your first fly into the pristine water.

Now imagine luxury camping Paws Up style—with your own well-appointed tent complete with *The Last Best Bed*, electricity, spacious deck, en suite bathroom, scrumptious meals and even your own personal camping butler.

River Camp features six tent suites and a Dining Pavilion that serves delicious cuisine and breathtaking views of the Blackfoot River—the same majestic river that inspired the novel and film *A River Runs Through It*.

FEATURES AND AMENITIES

- Two 605-square-foot one-bedroom tents, with full bath (sleeps two)
- Four 830-square-foot two-bedroom tents, with full bath (sleeps four)
- En suite bathroom with heated floor
- Electricity, air conditioning and heat
- A camping butler and a camp chef
- An inviting Dining Pavilion with views of the Blackfoot River
- Private deck
- Daily full-service housekeeping
- Nightly bonfire in a fire pit plus cocktails and s’mores
- Laundry
- Complimentary Wi-Fi in tent and Dining Pavilion
- River Camp Beach access
- Kids’ Recreation Center





Cliffside Camp

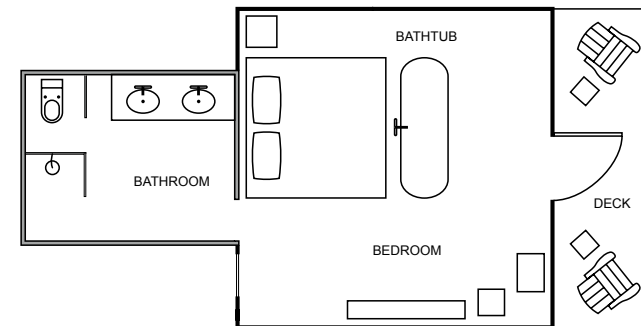
C L I F F S I D E C A M P

Located near Paws Up's famous covered bridge and atop a soaring cliff that overlooks the confluence of the Blackfoot River and Elk Creek, Cliffside Camp combines luxurious amenities with some of The Resort's most stunning views to create the ultimate glamping experience in Montana. Four two-bedroom tent suites feature plenty of room for families, while two one-bedroom honeymoon tents, complete with a copper tub for two, serve as the quintessential accommodations for romantic getaways.

FEATURES AND AMENITIES

- Two 605-square-foot one-bedroom tents, with full bath (sleeps two)
- Four 975-square-foot two-bedroom tents, with full bath (sleeps four)
- En suite bathroom with heated floor
- Electricity, air conditioning and heat
- A camping butler and a camp chef
- An expansive Dining Pavilion with river and mountain views
- Private deck
- Daily full-service housekeeping
- Nightly bonfire in a fire pit plus cocktails and s'mores
- Laundry
- Complimentary Wi-Fi in tent and Dining Pavilion
- Camper's Beach access

ONE-BEDROOM TENT WITH EN SUITE BATHROOM
605 SQUARE FEET



TWO-BEDROOM TENT WITH EN SUITE BATHROOM
975 SQUARE FEET



N O R T H B A N K C A M P

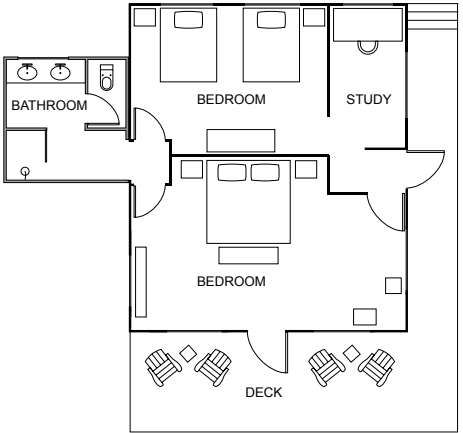
Perched on a picturesque, rocky, timbered bluff overlooking the legendary Blackfoot River, Paws Up’s latest glamping creation, North Bank Camp, offers a luxurious retreat into the Montana wilderness. It’s our only camp on the north bank of the river, and every tent has a riverfront location, with a spacious furnished deck suspended over the slope to afford inspiring Big Sky views. The camp can accommodate families and larger groups with two-bedroom tents and The Resort’s first three-bedroom tents. And for a spectacular dining experience, North Bank’s Dining Pavilion is our most expansive, featuring a stone fireplace, bar seating and floor-to-ceiling sliding glass doors.

FEATURES AND AMENITIES

- One 984-square-foot two-bedroom tent, with full bath (sleeps five)
- Three 984-square-foot two-bedroom tents, with full bath (sleeps four)
- Two 1,220-square-foot three-bedroom tents, with two full baths (sleeps six)
- En suite bathroom with heated floor
- Electricity, air conditioning and heat
- Private deck with river views
- A camping butler and a camp chef
- An expansive Dining Pavilion with meadow-to-mountain views
- Daily full-service housekeeping
- Nightly bonfire in a fire pit plus cocktails and s’mores
- Laundry
- Complimentary Wi-Fi in tent and Dining Pavilion

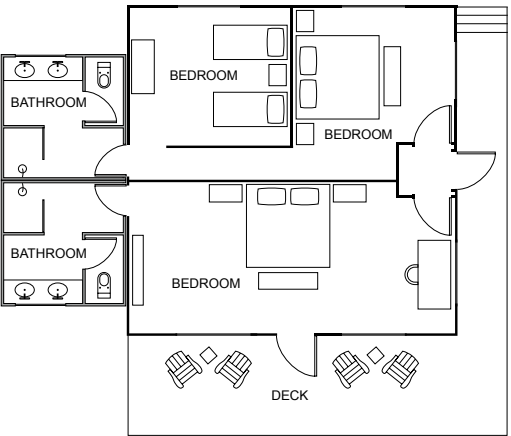
TWO-BEDROOM TENT WITH EN SUITE BATHROOM

984 SQUARE FEET



THREE-BEDROOM TENT WITH EN SUITE BATHROOMS

1,220 SQUARE FEET



*Artist renderings shown above.



Creekside Camp

LUXURY CAMPS AT A GLANCE									
Luxury Camp	Bedrooms	Square Feet	Capacity	Bathrooms	Location	Camping Butler and Camp Chef	24-Hour Transportation	Cell Service and Wi-Fi	Distance to Village
Moonlight Camp	1 two-bedroom tent 3 two-bedroom tents 2 one-bedroom tents	975 975 605	5 guests 4 guests 2 guests	En suite	Short walk to the Blackfoot River	Yes	Yes	Yes	4.4-mile drive
Creekside Camp	1 two-bedroom tent 3 two-bedroom tents 2 one-bedroom tents	830 830 505	5 guests 4 guests 2 guests	En suite	On the banks of Elk Creek	Yes	Yes	Yes	4-mile drive 1.75-mile walk
Pinnacle Camp	4 two-bedroom tents 2 one-bedroom tents (1 honeymoon tent)	1,030 565	4 guests 2 guests	En suite	On the banks of the Blackfoot River	Yes	Yes	Yes	4-mile drive 1.75-mile walk
River Camp	4 two-bedroom tents 2 one-bedroom tents	830 605	4 guests 2 guests	En suite	On the banks of the Blackfoot River	Yes	Yes	Yes	4-mile drive 1.75-mile walk
Cliffside Camp	4 two-bedroom tents 2 one-bedroom tents (2 honeymoon tents)	975 605	4 guests 2 guests	En suite	On a cliff overlooking the Blackfoot River	Yes	Yes	Yes	4-mile drive 1.75-mile walk
North Bank Camp	2 three-bedroom tents 1 two-bedroom tent 3 two-bedroom tents	1,220 984 984	6 guests 5 guests 4 guests	2 en suite En suite En suite	On the banks of the Blackfoot River	Yes	Yes	Yes	4-mile drive

F R E Q U E N T L Y A S K E D Q U E S T I O N S



What is luxury camping at Paws Up? The beauty of luxury camping at Paws Up is that it bridges the divide between the authentic experience of communing with nature and adult desires for amenities and comfort. Each safari-style tent features fine linens, *The Last Best Bed*, chic rustic furnishings, a private master bathroom, cooling fans, air conditioning, heat and, most importantly, a skilled camp chef and a highly attentive camping butler at your beck and call. Guests at our camps can participate in all activities and are encouraged to experience everything Montana’s only 37,000-acre luxury ranch resort has to offer.

What are the differences between the six luxury camps? While each of our camps provides the same level of personalized service and unique wilderness adventures, each has its own distinct personality and unforgettable setting. For a detailed description of the camps and their differences, please refer to the individual camp Features and Amenities sections in this guide.

Which camp is the most luxurious? Each camp boasts an unrivaled level of luxury. Our newest and most luxurious camp, North Bank Camp, features panoramic views of the Blackfoot River and The Resort’s first three-bedroom, two-bathroom tents.

Can I stay in both the luxury tents and luxury homes? Yes. If you can’t decide between a home or a tent, try both. We invite you to stay four nights in a home with amenities like kitchens, hot tubs, personal transportation, smart TVs, laundry and more. Then stay three nights in a tent at any of our six camps where you’ll rough it like a royal. It’s like going on two vacations at the same resort—in the same week. We also offer a selection of our luxury homes that feature a private tent just outside.

Can my group or family reserve an entire luxury camp including the butler and the chef? Whether you are planning a family reunion, milestone birthday, anniversary celebration, corporate retreat or any other special event, you can reserve an entire luxury camp just for your group. You’ll have exclusive access to all six tents and the camp’s Dining Pavilion, fire pit, chef and your own camping butler. Our camps are in high demand and tend to sell out quickly. To reserve an entire camp for your group, we recommend making a reservation at least one year in advance.

What dates are the luxury tents available? Early May through mid-October.

Is there an age limit for children staying in tents? Children of all ages are welcome.

Which luxury camps cater to couples and honeymooners? Most camps at Paws Up feature romantic one-bedroom tents ideal for couples and honeymooners. Pinnacle Camp and Cliffside Camp feature our exclusive honeymoon tents. Their private locations and plethora of romantic amenities—including a gorgeous copper tub in the bedroom—make these the quintessential accommodations for honeymooners.

Which luxury camps cater to families? Each of our luxury camps offers multiple two-bedroom tent suites that accommodate up to five people. North Bank Camp features two 3-bedroom tents that can accommodate six guests. For families with younger kids, we recommend Moonlight Camp and Creekside Camp.

How far are the tents from the main Village? Can we walk? Each camp is nestled in an ideal setting just a few miles from the Village at Paws Up, ensuring the privacy, exclusivity and serenity necessary to accentuate your luxury camping experience. The Village is a 1.75-mile hike on a marked trail from four of our six camps.

How do we get around The Resort? Paws Up’s Bell Staff caters to all of your transportation needs—making sure that you get to where you want to go quickly and comfortably. All Resort transportation is complimentary.

What does the camping butler do? Is there one per tent or per camp? There is one camping butler who is dedicated to each luxury camp. The camping butler does everything from starting a fire and preparing scrumptious s’mores to providing entertainment and assisting with planning and scheduling your daily itineraries.

Where do we eat and what’s the food like? Each luxury camp has its own private Dining Pavilion and camp chef. Breakfast and dinner are served each day at your camp and lunch is served at Trough, our casual dining restaurant located in the Village at Paws Up. The cuisine is refined rustic ranch and includes such dishes as baby back ribs with chipotle barbecue sauce, smoked trout cakes, bison New York steak and grilled salmon. Meals are prepared by each camp’s chef and served family-style by the camping butler. Each Dining Pavilion is also fully stocked with snacks and a variety of refreshing beverages. All meals and nonalcoholic beverages, as well as specially selected wine, beer and well drinks with lunch and dinner, are included in the nightly rate.

How do we communicate with Concierge Services when we’re in our camp? Whether you’re making dining reservations, booking wilderness activities or arranging for transportation, the Paws Up App will provide a high level of convenience and accessibility, enhancing the quality and enjoyment of your stay at *The Last Best Place*. You can download the free Paws Up App from Apple’s App Store or Google Play.

LUXURY CAMPS AT PAWS UP



MOONLIGHT CAMP

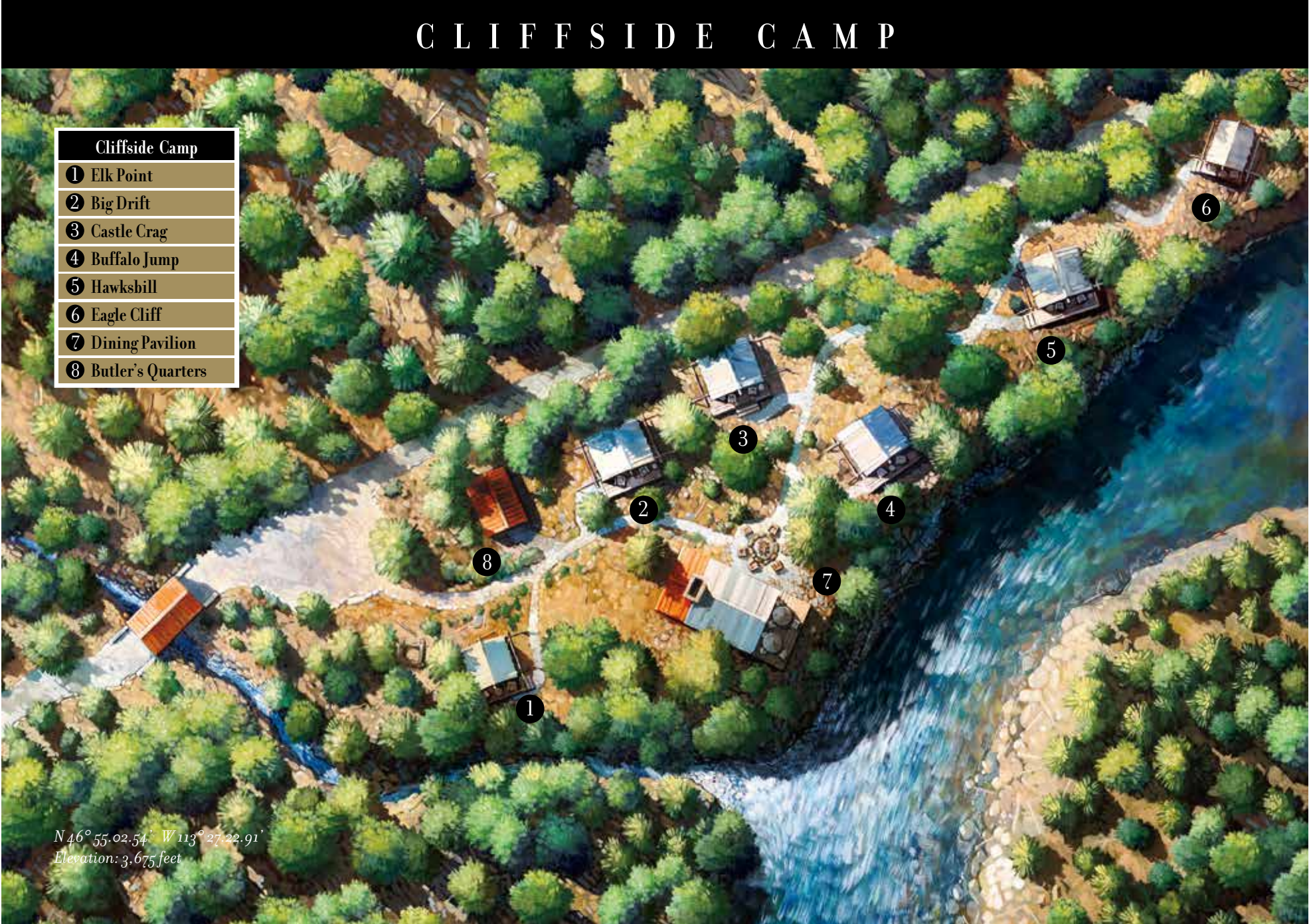
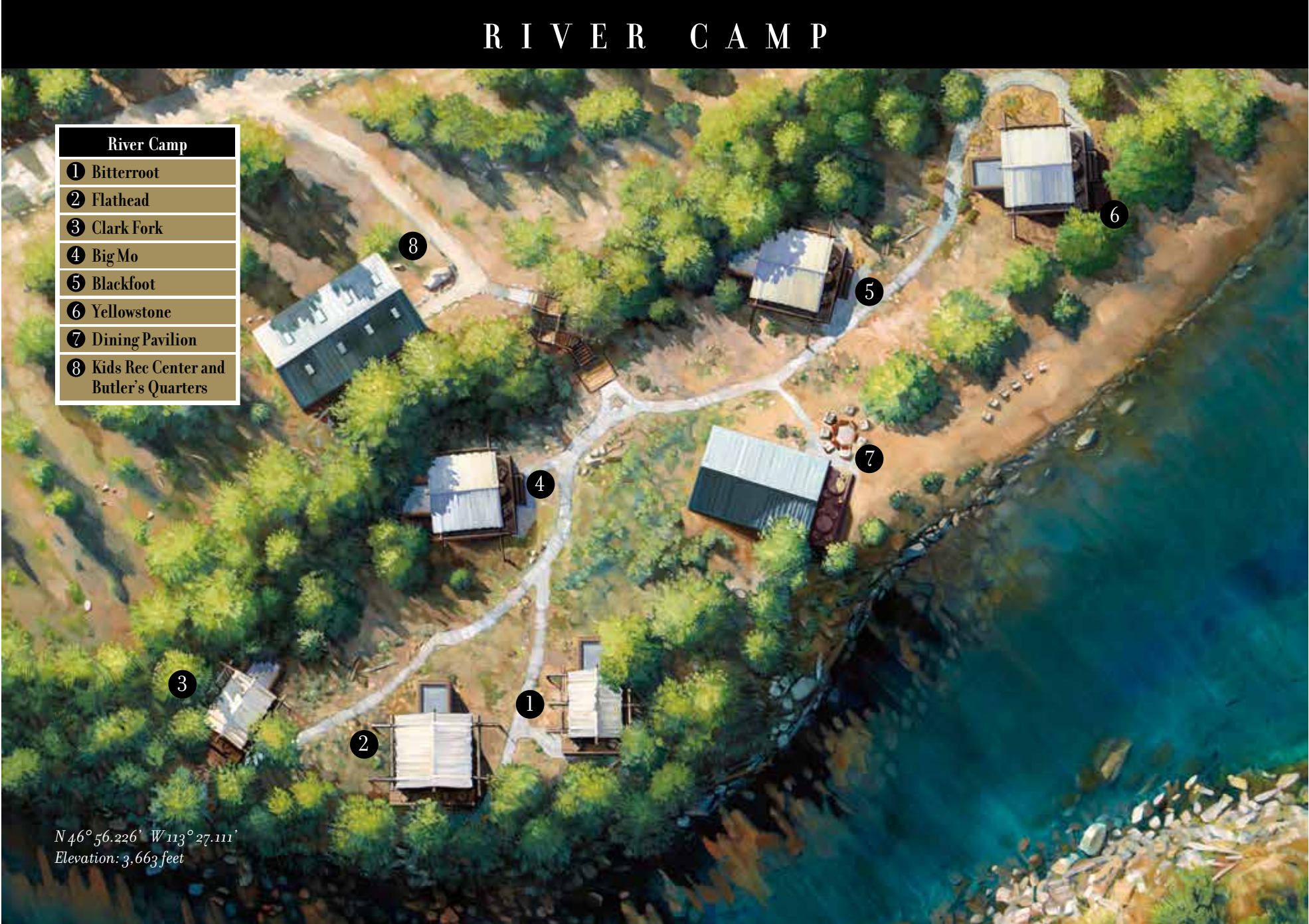


CREEK SIDE C A M P



P I N N A C L E C A M P









4 0 0 6 0 P A W S U P R O A D G R E E N O U G H , M T 5 9 8 2 3
8 0 0 - 4 7 3 - 0 6 0 1 T H E R E S O R T @ P A W S U P . C O M W W W . P A W S U P . C O M



PAWS UP, THE LAST BEST PLACE, THE LAST BEST BED, THE RESORT AT PAWS UP, SPA TOWN and the Paw Design are trademarks of licensors of Paws Up Ranch LLC, used under license. © 2017 The Last Best Beef LLC. All rights reserved.
ANDREW HARPER, VIRTUOSO, TOP 50 RANGES, SIGNATURE TRAVEL NETWORK, CONDÉ NAST JOHANSSENS, PURE LIFE EXPERIENCES, GLAMPING.COM and Design are trademarks of their respective owners.

