



LUXURY CAMPING



LUXURY CAMPING

There's nothing like sleeping under the stars, listening to nature and calling your butler when you need an extra pillow. The Resort at Paws Up® is North America's premier glamping destination, featuring six luxury tented camps that cater to families, couples and groups. Each safari-style tent features fine linens, *The Last Best Bed*®, chic rustic furnishings, art-adorned walls, electricity, air-conditioning, heat and, most importantly, a camping butler at your beck and call. Refresh yourself in your private master bathroom with a Montana-sized rain shower, jetted tub, heated floors and indulgent organic spa products. Your skilled chef will bring new meaning to haute grilling as he cooks before your eyes in the camp's Dining Pavilion. Luxury camping at Paws Up is nature served on a silver platter.



GET TO KNOW THE CAMPS, INSIDE AND OUT.



MOONLIGHT CAMP

Located on a private section of the ranch, Moonlight Camp is a *Greetings from Montana!* postcard come to life. Take a short stroll to the river, go for a bike ride, play horseshoes, sink back into Adirondack chairs and revel in this quintessentially Montana-style glamping retreat. Moonlight Camp is perhaps the most picturesque camp at Paws Up.



CREEKSID CAMP

Wander off and explore—we'll be sure to call you back for dinner. Located on the banks of the idyllic Elk Creek, Creekside Camp is well suited for families with small (and medium-size!) kids. It offers plenty of charming wooded space to run, play and reconnect with nature. We like to think of Creekside Camp as the perfect home base.



PINNACLE CAMP

Pinnacle Camp offers more than just a jaw-dropping view—here you also have access to swimming and fishing on the Blackfoot River. And after a full day, sinking into your welcoming tub might be your favorite part. You'll find Pinnacle Camp is the best of both worlds, where you can take in the scenery and get your feet wet.



RIVER CAMP

With tents that sit directly on the banks of the river, this camp lets you take full advantage of its legendary waters. After spending your days fishing, swimming and relaxing with the current as your faithful companion, you might find it hard to return to life on dry land. River Camp offers quite possibly the best Blackfoot experience.



CLIFFSIDE CAMP

Each tent at Cliffside Camp is perched atop a soaring cliff—and the heightened drama doesn't end there. The camp's Dining Pavilion extends over the Blackfoot River to offer dazzling surroundings at every meal. It's also home to two ultra-romantic honeymoon tents. At Cliffside Camp, you'll have the most dramatic views.



NORTH BANK CAMP

Glamping has grown since Paws Up invented it. So we grew, too. North Bank is the first camp in the U.S. to offer three-bedroom tents, and every tent has a spacious balcony overlooking the river. Plus, the camp's Dining Pavilion features a massive fireplace and soaring glass walls. You could say North Bank Camp is Glamping 2.0.

M O O N L I G H T C A M P

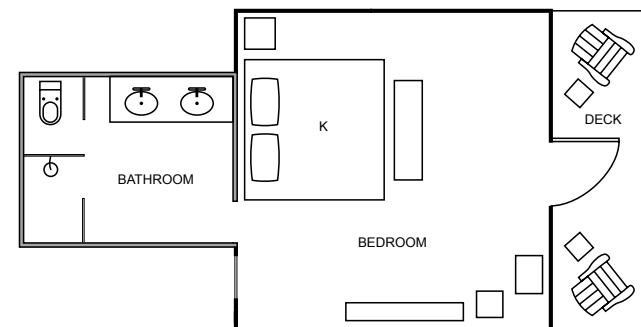


Moonlight Camp is a collection of six safari-style tents that allow guests to connect with the great outdoors without forgoing the creature comforts of a luxury resort. Situated at the foot of Lewis & Clark's famous Lookout Rock and just a short stroll from the mighty Blackfoot River, Moonlight Camp has an impressive array of features and amenities, including *The Last Best Bed*, private en suite bathrooms, a gorgeous Dining Pavilion that serves gourmet cuisine and a camping butler who caters to your every whim.

FEATURES AND AMENITIES

- Two 605-square-foot one-bedroom tents, with full bath (sleeps two)
- One 975-square-foot two-bedroom tent, with full bath (sleeps five)
- Three 975-square-foot two-bedroom tents, with full bath (sleeps four)
- En suite bathroom with heated floor
- Electricity, air-conditioning and heat
- Private deck
- A camping butler and a camp chef
- An expansive Dining Pavilion with meadow-to-mountain views
- Daily full-service housekeeping
- Nightly bonfire in a fire pit plus cocktails and s'mores
- Laundry
- Complimentary Wi-Fi in tent and Dining Pavilion
- Blackfoot River access

ONE-BEDROOM TENT WITH EN SUITE BATHROOM



TWO-BEDROOM TENT WITH EN SUITE BATHROOM



BED KEY
K: KING T: TWIN



CREEKSIDE CAMP

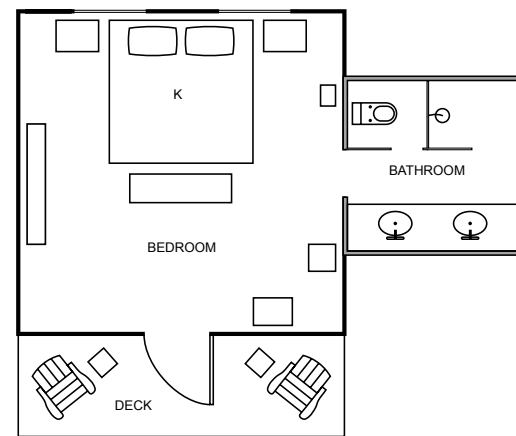


Creekside Camp is situated on the banks of the beautiful and pastoral Elk Creek and features six spacious tent suites: four two-bedroom suites and two one-bedroom suites. Each tent comes with *The Last Best Bed* and an en suite bathroom with a two-sink vanity and a large slate shower. Creekside Camp also has an architecturally impressive Dining Pavilion with a monumental stone-and-timber fireplace, as well as an outdoor fire pit—perfect for a night of stories and s’mores. The gorgeous mountain setting of Creekside Camp will frequently remind you that you’re in *The Last Best Place*.

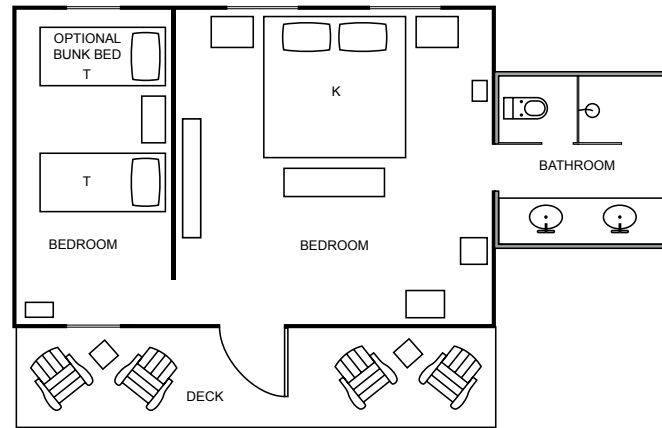
FEATURES AND AMENITIES

- Two 505-square-foot one-bedroom tents, with full bath (sleeps two)
- One 830-square-foot two-bedroom tent, with full bath (sleeps five)
- Three 830-square-foot two-bedroom tents, with full bath (sleeps four)
- En suite bathroom with heated floor
- Electricity, air-conditioning and heat
- Private deck
- A camping butler and a camp chef
- An expansive Dining Pavilion overlooking Elk Creek
- Daily full-service housekeeping
- Nightly bonfire in a fire pit plus cocktails and s’mores
- Laundry
- Complimentary Wi-Fi in tent and Dining Pavilion

ONE-BEDROOM TENT WITH EN SUITE BATHROOM



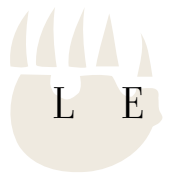
TWO-BEDROOM TENT WITH EN SUITE BATHROOM



BED KEY
K: KING T: TWIN



P I N N A C L E C A M P

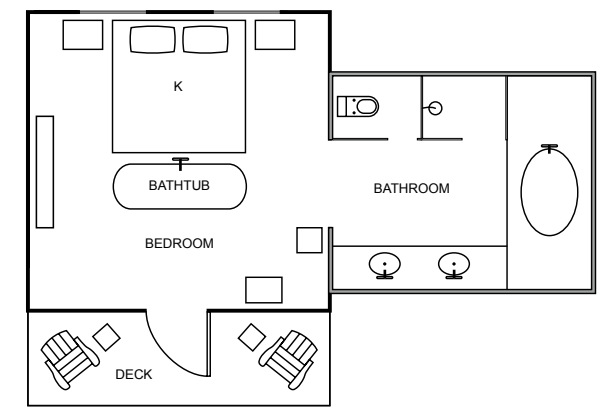


Luxury camping has reached new heights at Pinnacle Camp. Situated on a bluff overlooking the confluence of the Blackfoot River and Elk Creek, this special camp offers some of the most breathtaking views on our 37,000-acre property. Pinnacle Camp features expansive safari-style tents (including Tango Point, an exquisite honeymoon tent) that each include an en suite bathroom with a jetted tub and shower, a plush Dining Pavilion and a myriad of luxury resort amenities.

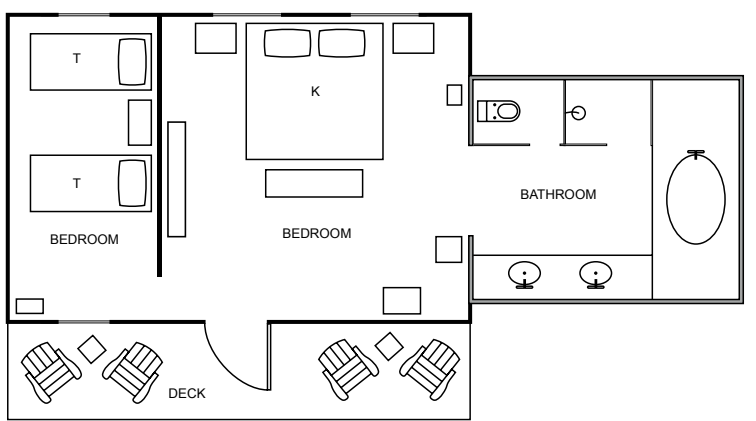
FEATURES AND AMENITIES

- Two 565-square-foot one-bedroom tents, with full bath (sleeps two)
- Four 1,030-square-foot two-bedroom tents, with full bath (sleeps four)
- En suite bathroom with heated floor
- Electricity, air-conditioning and heat
- Private deck
- A camping butler and a camp chef
- An expansive Dining Pavilion with views of the Blackfoot River
- Daily full-service housekeeping
- Nightly bonfire in a fire pit plus cocktails and s'mores
- Laundry
- Complimentary Wi-Fi in tent and Dining Pavilion

ONE-BEDROOM TENT WITH EN SUITE BATHROOM



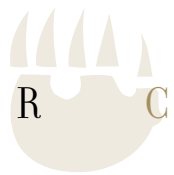
TWO-BEDROOM TENT WITH EN SUITE BATHROOM



BED KEY
K: KING T: TWIN



R I V E R C A M P



Imagine camping on the banks of the legendary Blackfoot River. The soft music of the water lulls you gently to sleep while a blanket of stars twinkles overhead. Rise with the sun and cast your first fly into the pristine water. Now imagine luxury camping Paws Up style—with your own well-appointed tent complete with *The Last Best Bed*, electricity, spacious deck, en suite bathroom, scrumptious meals and even your own personal camping butler. River Camp features six tent suites and a Dining Pavilion that serves gourmet cuisine and breathtaking views of the Blackfoot River—the same majestic river that inspired the novel and film *A River Runs Through It*.

FEATURES AND AMENITIES

- Two 605-square-foot one-bedroom tents, with full bath (sleeps two)
- Four 830-square-foot two-bedroom tents, with full bath (sleeps four)
- En suite bathroom with heated floor
- Electricity, air-conditioning and heat
- A camping butler and a camp chef
- An expansive Dining Pavilion with views of the Blackfoot River
- Private deck
- Daily full-service housekeeping
- Nightly bonfire in a fire pit plus cocktails and s'mores
- Laundry
- Complimentary Wi-Fi in tent and Dining Pavilion
- River Camp Beach access
- Kids' Recreation Center



C L I F F S I D E C A M P

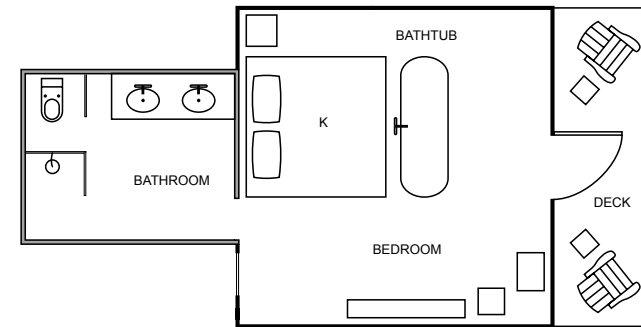


Located near Paws Up's famous covered bridge and atop a soaring cliff that overlooks the confluence of the Blackfoot River and Elk Creek, Cliffside Camp combines luxurious amenities with The Resort's most stunning views to create the ultimate glamping experience in Montana. Four two-bedroom tent suites feature plenty of room for families, while two one-bedroom honeymoon tents, complete with a copper tub for two, serve as the quintessential accommodations for romantic getaways.

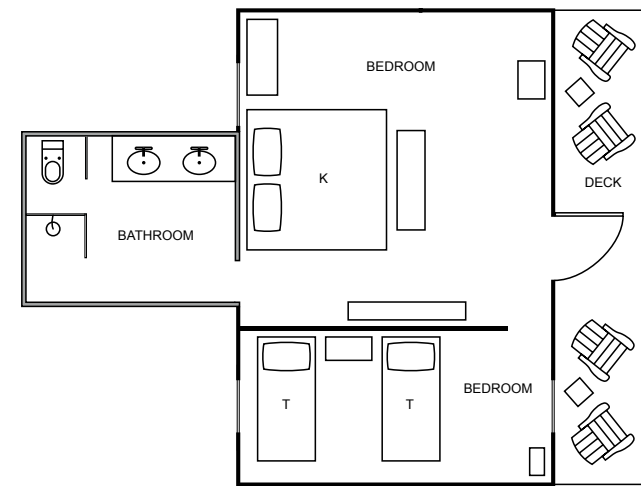
FEATURES AND AMENITIES

- Two 605-square-foot one-bedroom tents, with full bath (sleeps two)
- Four 975-square-foot two-bedroom tents, with full bath (sleeps four)
- En suite bathroom with heated floor
- Electricity, air-conditioning and heat
- A camping butler and a camp chef
- An expansive Dining Pavilion with river and mountain views
- Private deck
- Daily full-service housekeeping
- Nightly bonfire in a fire pit plus cocktails and s'mores
- Laundry
- Complimentary Wi-Fi in tent and Dining Pavilion
- Camper's Beach access

ONE-BEDROOM TENT WITH EN SUITE BATHROOM



TWO-BEDROOM TENT WITH EN SUITE BATHROOM



BED KEY
K: KING T: TWIN



N O R T H B A N K C A M P

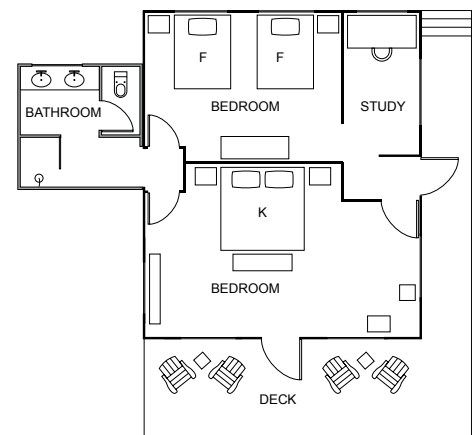


Perched on a picturesque, rocky, timbered bluff overlooking the legendary Blackfoot River, Paws Up's latest glamping creation, North Bank Camp, offers a luxurious retreat into the Montana wilderness. It's our only camp on the north bank of the river, and every tent has a riverfront location, with a spacious furnished deck suspended over the slope to afford inspiring Big Sky views. The camp can accommodate families and larger groups with two-bedroom tents and The Resort's first three-bedroom tents. And for a spectacular dining experience, North Bank's Dining Pavilion is our most expansive, featuring a stone fireplace, bar seating and floor-to-ceiling sliding glass doors.

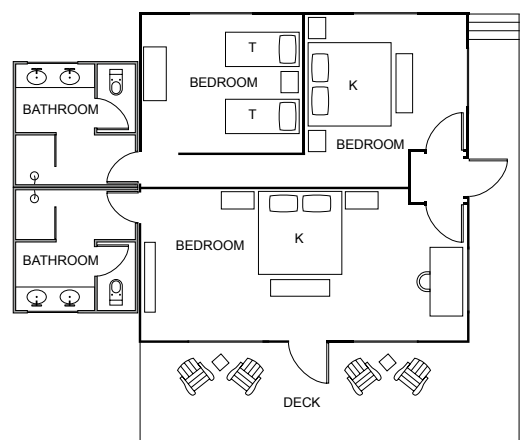
FEATURES AND AMENITIES

- One 984-square-foot two-bedroom tent, with full bath (sleeps five)
- Three 984-square-foot two-bedroom tents, with full bath (sleeps four)
- Two 1,220-square-foot three-bedroom tents, with two full baths (sleeps six)
- En suite bathroom with heated floor
- Electricity, air-conditioning and heat
- Private deck with river views
- A camping butler and a camp chef
- An expansive Dining Pavilion with meadow-to-mountain views
- Daily full-service housekeeping
- Nightly bonfire in a fire pit plus cocktails and s'mores
- Laundry
- Complimentary Wi-Fi in tent and Dining Pavilion

TWO-BEDROOM TENT WITH EN SUITE BATHROOM



THREE-BEDROOM TENT WITH EN SUITE BATHROOMS



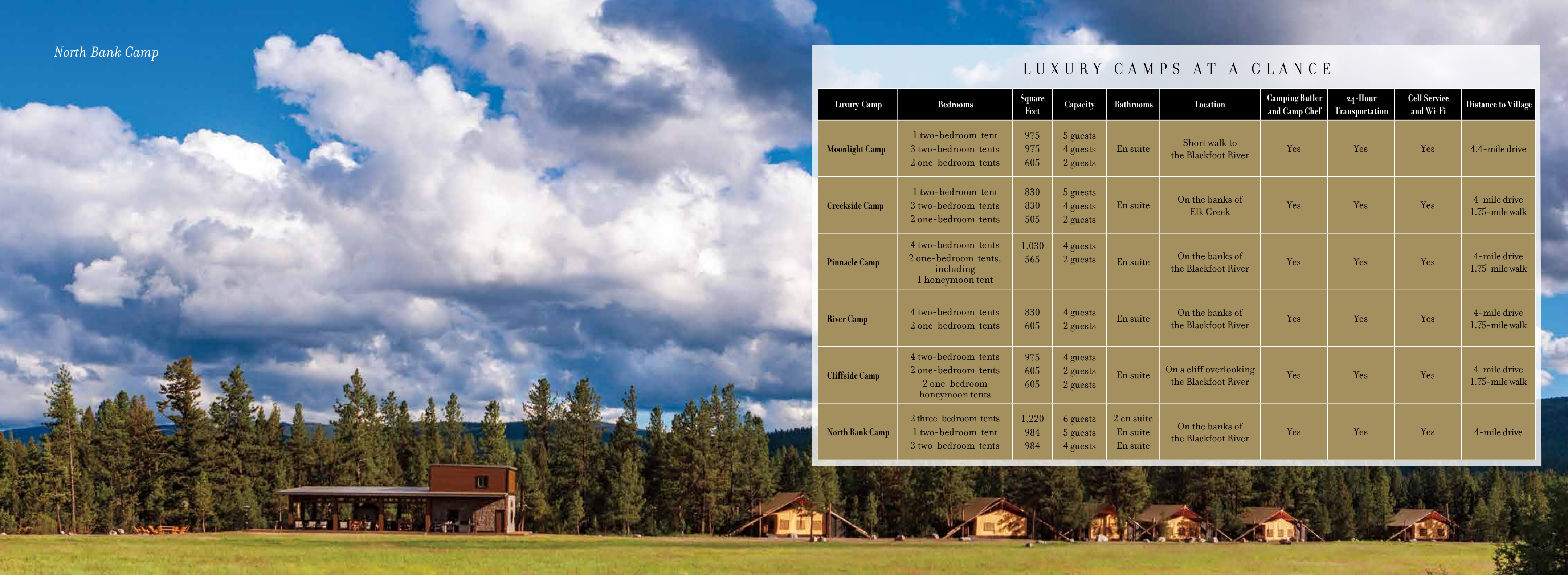
BED KEY
K: KING F: FULL T: TWIN



North Bank Camp

LUXURY CAMPS AT A GLANCE

Luxury Camp	Bedrooms	Square Feet	Capacity	Bathrooms	Location	Camping Butler and Camp Chef	24-Hour Transportation	Cell Service and Wi-Fi	Distance to Village
Moonlight Camp	1 two-bedroom tent	975	5 guests	En suite	Short walk to the Blackfoot River	Yes	Yes	Yes	4.4-mile drive
	3 two-bedroom tents	975	4 guests						
	2 one-bedroom tents	605	2 guests						
Creekside Camp	1 two-bedroom tent	830	5 guests	En suite	On the banks of Elk Creek	Yes	Yes	Yes	4-mile drive 1.75-mile walk
	3 two-bedroom tents	830	4 guests						
	2 one-bedroom tents	505	2 guests						
Pinnacle Camp	4 two-bedroom tents	1,030	4 guests	En suite	On the banks of the Blackfoot River	Yes	Yes	Yes	4-mile drive 1.75-mile walk
	2 one-bedroom tents, including	565	2 guests						
	1 honeymoon tent								
River Camp	4 two-bedroom tents	830	4 guests	En suite	On the banks of the Blackfoot River	Yes	Yes	Yes	4-mile drive 1.75-mile walk
	2 one-bedroom tents	605	2 guests						
Cliffside Camp	4 two-bedroom tents	975	4 guests	En suite	On a cliff overlooking the Blackfoot River	Yes	Yes	Yes	4-mile drive 1.75-mile walk
	2 one-bedroom tents	605	2 guests						
	2 one-bedroom honeymoon tents	605	2 guests						
North Bank Camp	2 three-bedroom tents	1,220	6 guests	2 en suite	On the banks of the Blackfoot River	Yes	Yes	Yes	4-mile drive
	1 two-bedroom tent	984	5 guests	En suite					
	3 two-bedroom tents	984	4 guests	En suite					



F R E Q U E N T L Y A S K E D Q U E S T I O N S



What is luxury camping at Paws Up? The beauty of luxury camping at Paws Up is that it bridges the divide between the authentic experience of communing with nature and adult desires for amenities and comfort. Each safari-style tent features fine linens, *The Last Best Bed*, chic rustic furnishings, a private master bathroom, cooling fans, air-conditioning, heat and, most importantly, a skilled camp chef and a highly attentive camping butler at your beck and call. Guests at our camps can participate in all activities and are encouraged to experience everything Montana's only 37,000-acre luxury ranch resort has to offer.

What are the differences between the six luxury camps? While each of our camps provides the same level of personalized service and unique wilderness adventures, each has its own distinct personality and unforgettable setting. For a detailed description of the camps and their differences, please refer to the individual camp Features and Amenities sections in this guide.

Which camp is the most luxurious? Each camp boasts an unrivaled level of luxury. Our newest and most luxurious camp, North Bank Camp, features panoramic views of the Blackfoot River and The Resort's first three-bedroom, two-bathroom tents.

Can I stay in both the luxury tents and luxury homes? Yes. If you can't decide between a home or a tent, try both. We invite you to stay four nights in a home with amenities like kitchens, hot tubs, personal transportation, smart TVs, laundry and more. Then stay three nights in a tent at any of our six camps where you'll rough it like a royal. It's like going on two vacations at the same resort—in the same week. We also offer a selection of our luxury homes that feature a private tent just outside (seasonal availability).

Can my group or family reserve an entire luxury camp, including the butler and the chef? Whether you are planning a family reunion, milestone birthday, anniversary celebration, corporate retreat or any other special event, you can reserve an entire luxury camp just for your group. You'll have exclusive access to all six tents and the camp's Dining Pavilion, fire pit, chef and your own camping butler. Our camps are in high demand and tend to sell out quickly. To reserve an entire camp for your group, we recommend making a reservation at least one year in advance.

What dates are the luxury tents available? May through mid-October.

Is there an age limit for children staying in tents? Children of all ages are welcome.

Which luxury camps cater to couples and honeymooners? Most camps at Paws Up feature romantic one-bedroom tents ideal for couples and honeymooners. Pinnacle Camp and Cliffside Camp feature our exclusive honeymoon tents. Their locations and plethora of romantic amenities—including a gorgeous copper tub in the bedroom—make these the quintessential accommodations for honeymooners.

Which luxury camps cater to families? Each of our luxury camps offers multiple two-bedroom tent suites that accommodate up to five people. North Bank Camp features two three-bedroom tents that can accommodate six guests. For families with younger kids, we recommend Moonlight Camp and Creekside Camp.

How far are the tents from the main Village? Can we walk? Each camp is nestled in an ideal setting just a few miles from the Village at Paws Up, ensuring the privacy, exclusivity and serenity necessary to accentuate your luxury camping experience. The Village is a 1.75-mile hike on a marked trail from four of our six camps.

How do we get around The Resort? Paws Up's Guest Services caters to all of your transportation needs—making sure that you get to where you want to go quickly and comfortably. All Resort transportation is complimentary.

What does the camping butler do? Is there one per tent or per camp? There is one camping butler who is dedicated to each luxury camp. The camping butler does everything from starting a fire and preparing scrumptious s'mores to providing entertainment and assisting with planning and scheduling your daily itineraries.

Where do we eat and what's the food like? Each luxury camp has its own private Dining Pavilion and camp chef. Breakfast and dinner are served each day at your camp and lunch is served at Trough, our casual dining restaurant located in the Village at Paws Up. The cuisine is refined rustic ranch and includes such dishes as baby back ribs with chipotle barbecue sauce, smoked trout cakes, bison New York steak and grilled salmon. Meals are prepared by each camp's chef and served family-style by the camping butler. Each Dining Pavilion is also fully stocked with snacks and a variety of refreshing beverages. All meals and nonalcoholic beverages, as well as specially selected wine, beer and well drinks with lunch and dinner, are included in the nightly rate.

How do we communicate with Concierge Services when we're in our camp? Whether you're making dining reservations, booking wilderness activities or arranging for transportation, the Paws Up App will provide a high level of convenience and accessibility, enhancing the quality and enjoyment of your stay at *The Last Best Place*. You can download the free Paws Up App from Apple's App Store or Google Play.

MOONLIGHT CAMP



CREEKSIDE CAMP



PINNACLE CAMP



Pinnacle Camp	
1	Tango Point 1 BEDROOM
2	Silver King 1 BEDROOM
3	Hoodoo 2 BEDROOMS
4	Goose Rock 2 BEDROOMS
5	Curly Bear 2 BEDROOMS
6	Big Heaven 2 BEDROOMS
7	Dining Pavilion

N 46° 56.108' W 113° 27.293'
Elevation: 3,679 feet

RIVER CAMP



River Camp	
1	Bitterroot 1 BEDROOM
2	Flathead 2 BEDROOMS
3	Clark Fork 1 BEDROOM
4	Big Mo 2 BEDROOMS
5	Blackfoot 2 BEDROOMS
6	Yellowstone 2 BEDROOMS
7	Dining Pavilion

N 46° 56.226' W 113° 27.111'
Elevation: 3,663 feet

CLIFFSIDE CAMP



- | Cliffside Camp | |
|----------------|----------------------------|
| 1 | Elk Point
1 BEDROOM |
| 2 | Big Drift
2 BEDROOMS |
| 3 | Castle Crag
2 BEDROOMS |
| 4 | Buffalo Jump
2 BEDROOMS |
| 5 | Hawksbill
2 BEDROOMS |
| 6 | Eagle Cliff
1 BEDROOM |
| 7 | Dining Pavilion |

N 46° 55.02.54' W 113° 27.22.91'
Elevation: 3,675 feet

NORTH BANK CAMP



- | North Bank Camp | |
|-----------------|-------------------------------|
| 1 | Sage Thrasher
2 BEDROOMS |
| 2 | Canvasback
3 BEDROOMS |
| 3 | Bufflehead
2 BEDROOMS |
| 4 | Cackling Goose
2 BEDROOMS |
| 5 | Dusky Grouse
2 BEDROOMS |
| 6 | American Dipper
3 BEDROOMS |
| 7 | Dining Pavilion |

N 46° 56.370' W 113° 26.892'
Elevation: 3,706 feet

LUXURY CAMPS AT PAWS UP





THE RESORT AT
PAWS UP®

4 0 0 6 0 P A W S U P R O A D G R E E N O U G H , M T 5 9 8 2 3
8 0 0 - 4 7 3 - 0 6 0 1 T H E R E S O R T @ P A W S U P . C O M W W W . P A W S U P . C O M

