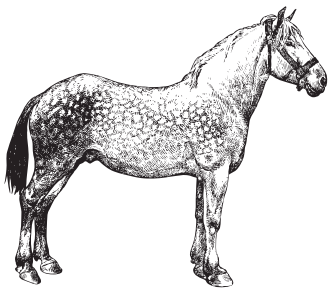


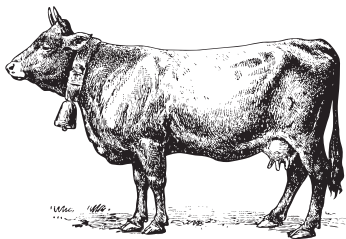
WHIPPERSNAPPER MENU



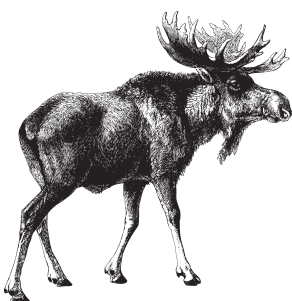
What's the oldest recorded horse?
A: A 19th-century horse named Old Billy reportedly lived 62 years.



What percentage of its day does a trout spend foraging for food?
A: 80%



What's the cattle versus human population in Montana?
*A: 1,015,165 Humans
 2,550,000 Cattle
 Ratio is 2.51*



How many pounds of food does a moose eat a day?
A: 60

MORNING GRUB

Silver Dollar Pancakes
 Maple Syrup

Organic Farm-Fresh Scrambled Eggs*
 Hutterite Bacon, Game and Pork Sausage, Gluten-Free Mini Muffin

Brioche French Toast
 Maple Syrup

Assorted Breakfast Cereals
 Homemade Granola, Dairy Gold Montana Farm Milk

ALL-DAY GRAZING

Big Sky Beef Burger*
 Creamy Mac and Cheese
 Margherita Cheese Pizza
 Pepperoni Cheese Pizza
 Crispy Chicken Strips
 Good Ol' American Cheeseburger*
 Buckaroo Grilled Cheese
 Killer Buttered Noodles
 Beef Hot Dog
 Pasta with Marinara Sauce
 Grilled Chicken Breast

THIS, THAT AND OTHER STUFF

Mixed Green Salad with Ranch Dressing
 Chef Ben's Pony Fries
 Vegetable Sticks with Ranch Dressing
 Sweet Potato Fries
 Seasonal Fruits
 Today's Jumbo Cookie Jar

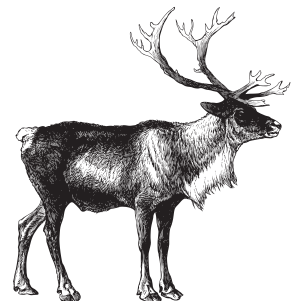
SIP, SUCK, SLURP

Dairy Gold Montana Farm Milk
 Dairy Gold Montana Farm Chocolate Milk
 Assorted Juice Boxes
 Blue Sky Soft Drinks Made with Real Cane Sugar

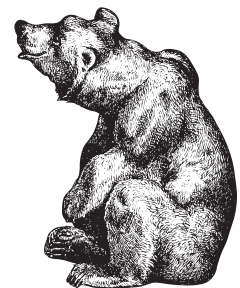
**Consumption of any raw or undercooked animal products can be hazardous to your health.*



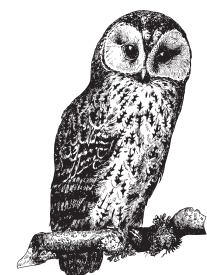
How much food does a hummingbird eat a day?
A: Twice its body weight



What is the sound an elk makes?
A: Bugle



Name the three types of bears found at Paws Up.
A: Black, brown and grizzly



How many degrees can an owl turn its head?
A: 270°