

# FACILITIES AND CATERING



*The Resort at*  
**PAWS UP**<sup>®</sup>  
THE LAST BEST PLACE





## FACILITIES AT PAWS UP

The Resort at Paws Up® is a complete destination for groups that range from small, intimate gatherings to incentive and corporate retreats. We

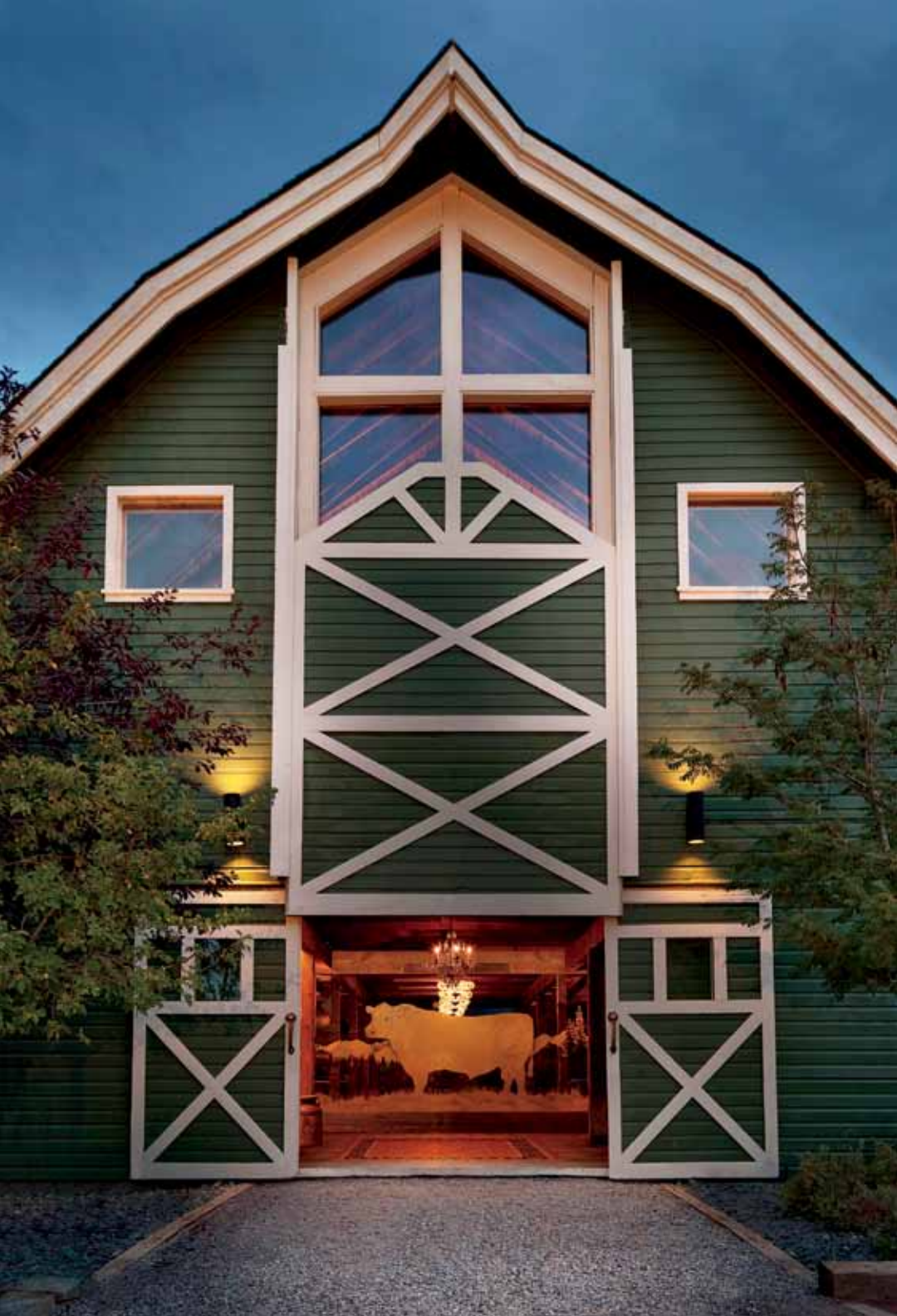


not only provide the space for successful corporate events, but also the environment to regenerate, revitalize and reward. Our meeting facilities offer

flexibility inside and out, all nestled within Montana's premier luxury ranch resort. With wilderness adventures abounding for all seasons, corporate team building and wellness programs are unique, effective and memorable. First-class amenities, world-class service and unforgettable views make The Resort at Paws Up, truly *The Last Best Meeting Place*.

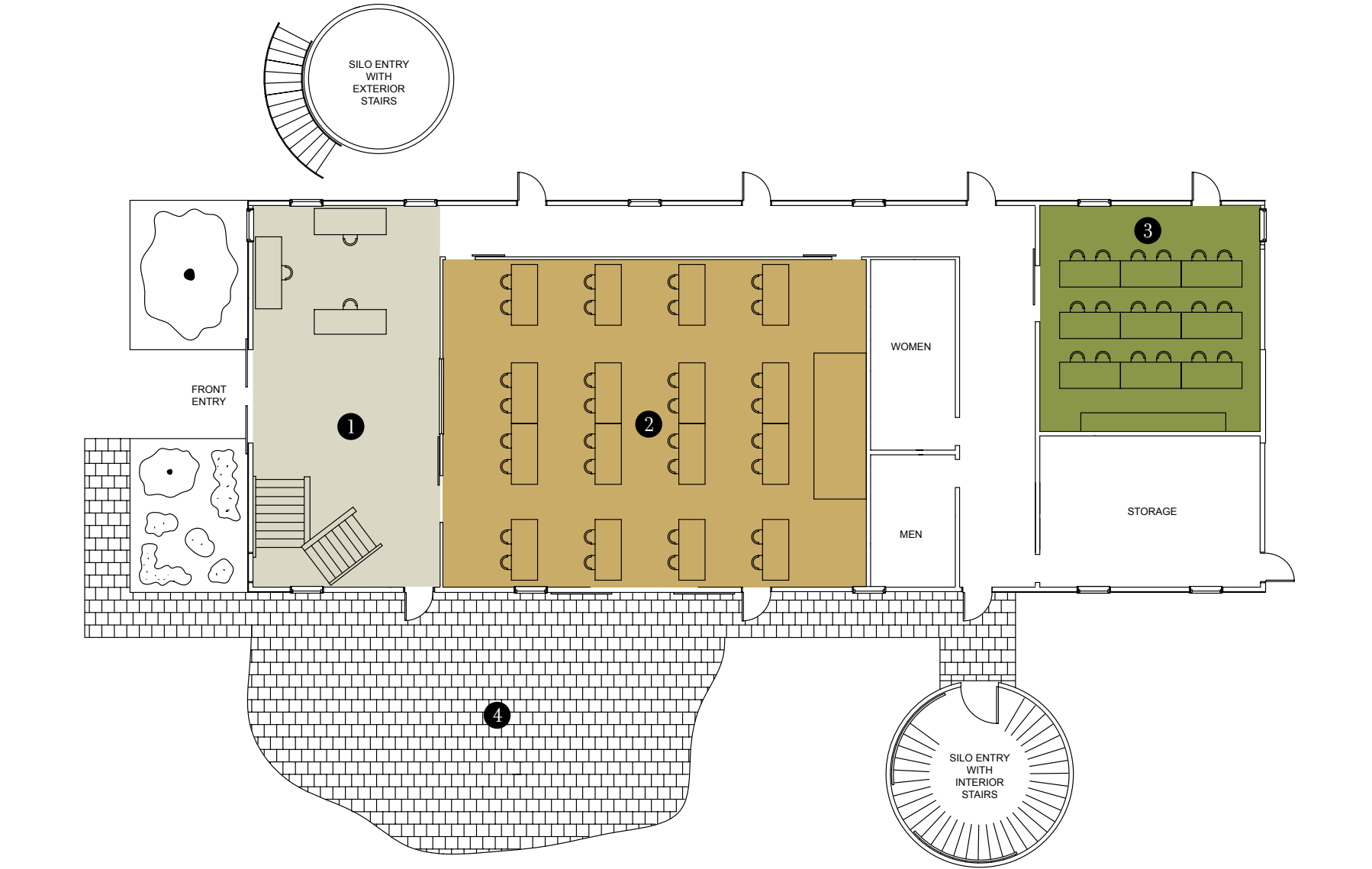






THE BULL BARN  
CONFERENCE FLOOR

The Bull Barn is an authentic Montana cattle barn that has been newly renovated into a world-class conference center and special event hall. The Conference Floor features two meeting rooms – Hereford Pen and Shorthorn Pen – providing an ideal setting and state-of-the-art audio-visual technology for successful presentations of any kind. Large, authentic sliding barn doors open to the Bull Pen Patio, allowing events to expand to the breathtaking outdoors for breaks and receptions.



Key and Capacities		Square Footage	Dimensions (L x W)	Theater	Classroom	U-Shape	Hollow Square	Conference	Banquet	Reception
	The Bull Barn Conference Floor	4,536	108 x 42							
1	Reception Area and Business Center	520	20 x 26	–	–	–	–	–	–	–
2	Hereford Pen	1,665	45 x 37	80	80	70	60	60	75	80
3	Shorthorn Pen	625	25 x 25	25	25	18	15	15	25	25
4	Bull Pen Patio	1,680	48 x 35	–	–	–	–	–	75	100



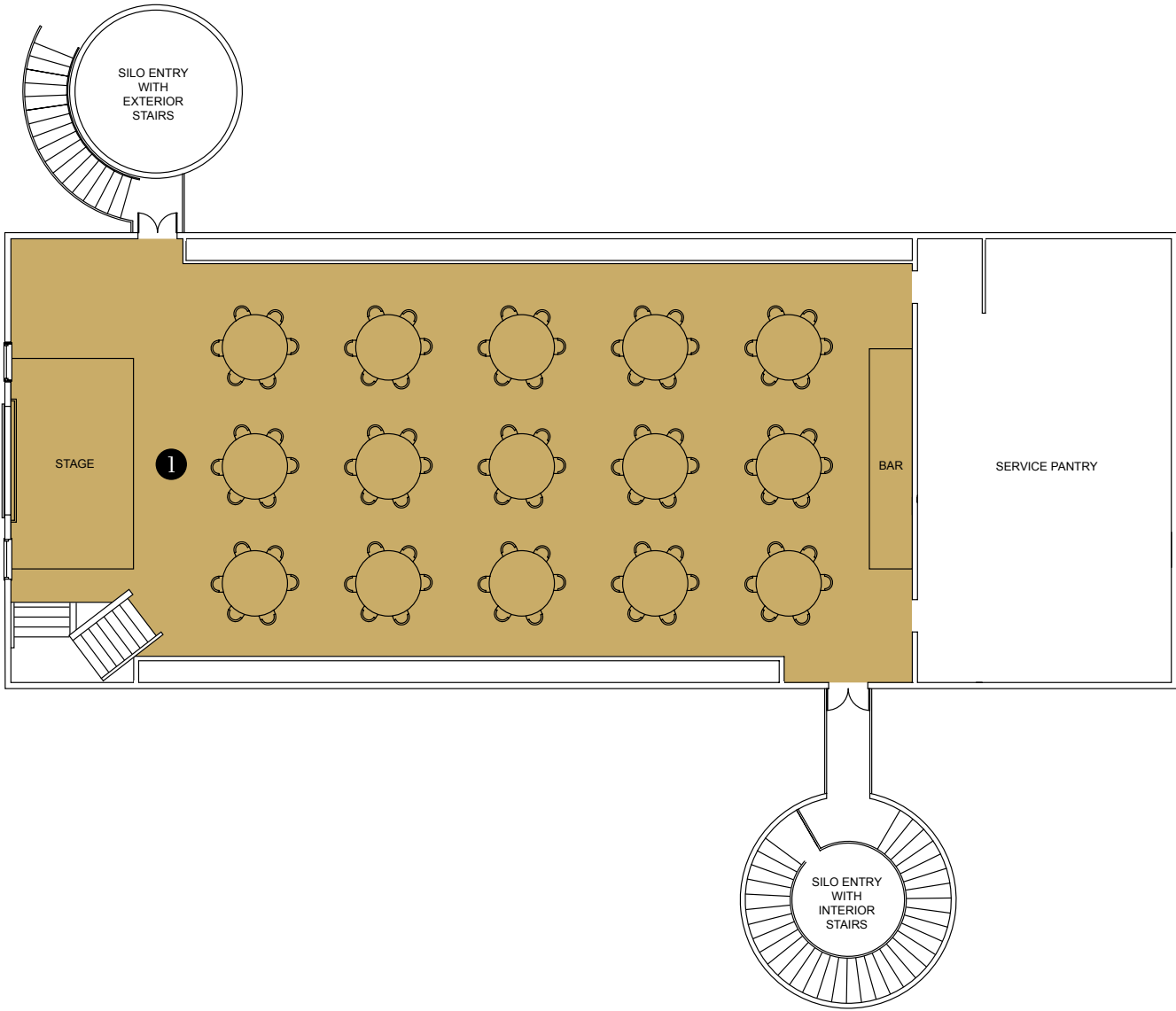


THE BULL BARN  
GREAT ANGUS HALL

The Great Angus Hall is an expansive banquet venue that features 3,145 square feet of space complete with a soaring vaulted ceiling and



audio-visual equipment. This prodigious room in the upper level of the Bull Barn – formerly used for hay storage – serves as the perfect space for large events of all types. The exposed rafters, blue-stain pine wood paneling and dramatic chandeliers give this grand restored hayloft a rustic, yet sophisticated ambiance. The hall is ideal for weddings, receptions and social gatherings of any kind for up to 200 people. Countless configuration options are available to customize your special event.



Key and Capacities		Square Footage	Dimensions (L x W)	Theater	Classroom	U-Shape	Hollow Square	Conference	Banquet	Reception
	The Bull Barn Second Floor	4,536	108 x 42							
1	Great Angus Hall	3,145	85 x 37	175	150	100	85	85	175	200





# THE COOK SHACK

Centrally located in the Village at Paws Up, the Cook Shack features a variety of Montana-inspired meeting facilities. The Tower Boardroom,



located in the Cook Shack’s iconic turret, is a quaint meeting space for up to 10 people and features a panoramic mountain view.

Pomp\*, our award-winning gourmet restaurant, seats up to 85 people – perfect for a memorable group dinner. Trough, our casual-dining restaurant, features a fun and unique western ambience for up to 65 people. Tank is our full-service bar – ideal for unwinding after a day of meetings and activities. A gorgeous deck with stunning views surrounds the entire building.



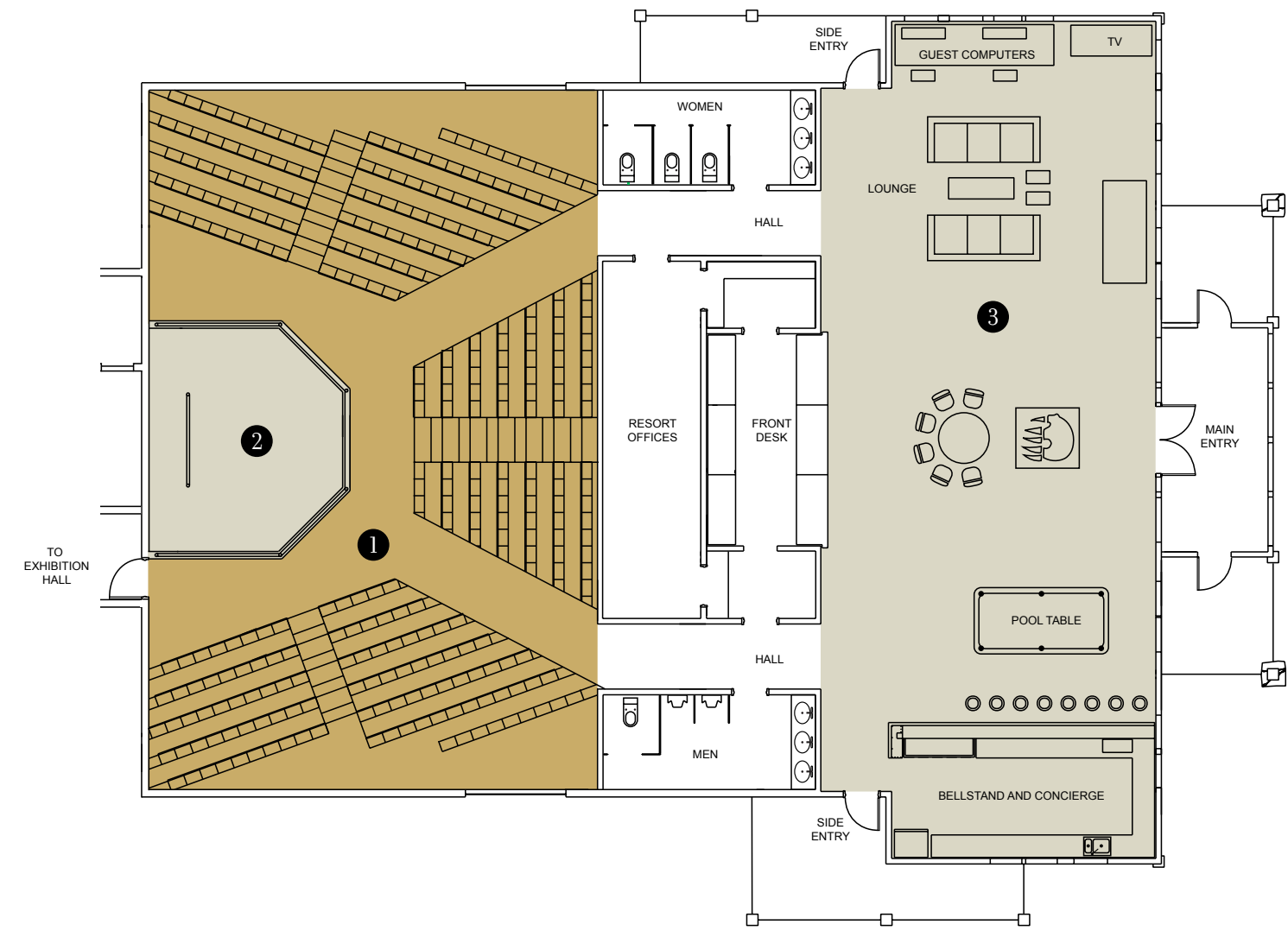
Key and Capacities		Square Footage	Dimensions (L x W)	Theater	Classroom	U-Shape	Hollow Square	Conference	Banquet	Reception
	The Cook Shack	5,057								
1	Tower Boardroom	314	–	–	–	–	–	10	–	–
2	Pomp	2,100	60 x 35	65	60	24	30	30	80	150
3	Pomp - Exterior Deck	1,575	–	–	–	–	–	–	40	75
4	Trough	1,512	36 x 42	66	50	30	40	30	66	115
5	Tank	1,131	29 x 39	–	–	–	–	–	–	50
6	Tank & Trough - Exterior Deck	2,560	–	–	–	–	–	–	55	125





LEWIS & CLARK  
RECEPTION BARN

At the Lewis & Clark Reception Barn, groups can relax comfortably in the leather furnishings in the lobby, check email at the business center, or even take part in a game of pool. Centrally located within the Village at Paws Up, this facility is the perfect initiation point for your successful program. It includes a theater-style auditorium with a professional sound system, a pull-down video screen and a permanent stage. With seating for up to 200 people, the Reception Barn is the ideal venue for a corporate training session, awards presentation, or even an executive comedy roast.

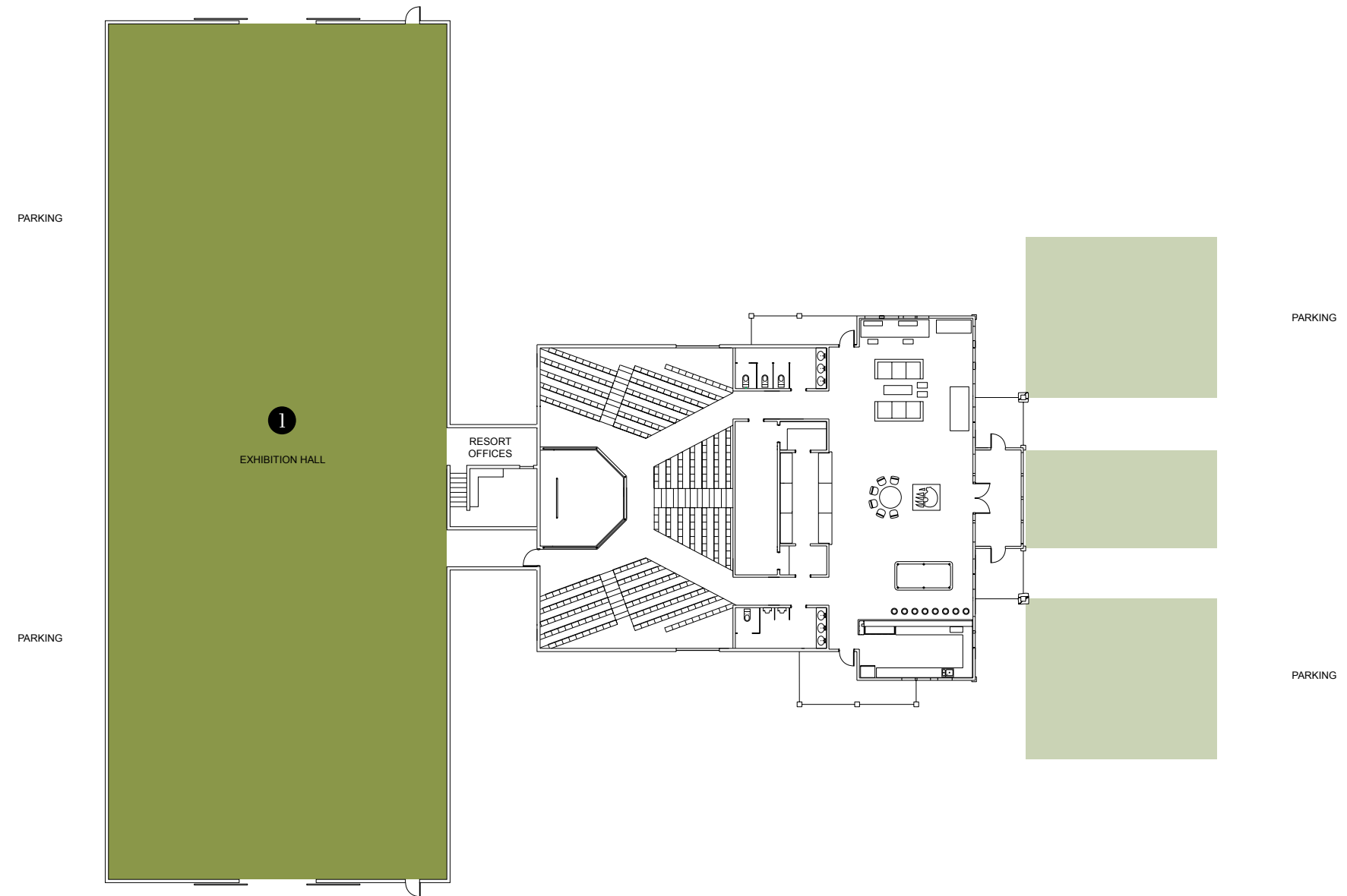


Key and Capacities		Square Footage	Dimensions (L x W)	Theater	Classroom	U-Shape	Hollow Square	Conference	Banquet	Reception
	Lewis & Clark Reception Barn	6,480								
1	Auditorium	2,560	40 x 64	200	—	—	—	—	20	100
2	Stage	360	18 x 20	—	—	—	—	10	—	—
3	Lobby	2,040	30 x 68	—	—	—	—	—	—	100



LEWIS & CLARK  
EXHIBITION HALL

The Resort at Paws Up is an ideal location for trade shows, product launch events, automotive exhibits and concerts. The Lewis & Clark Exhibition Hall has everything you need under one roof. This prodigious venue boasts an amazing 16,000 square feet of space with many different configuration options. The hall is capable of accommodating groups ranging in size from 200 to 1,800 people and includes all of the amenities you'll need to ensure the success of your event.



Key and Capacities		Square Footage	Dimensions (L x W)	Theater	Classroom	U-Shape	Hollow Square	Conference	Banquet	Reception
1	Lewis & Clark Exhibition Hall	16,000	80x200	1,500	800	—	—	—	800	1,400





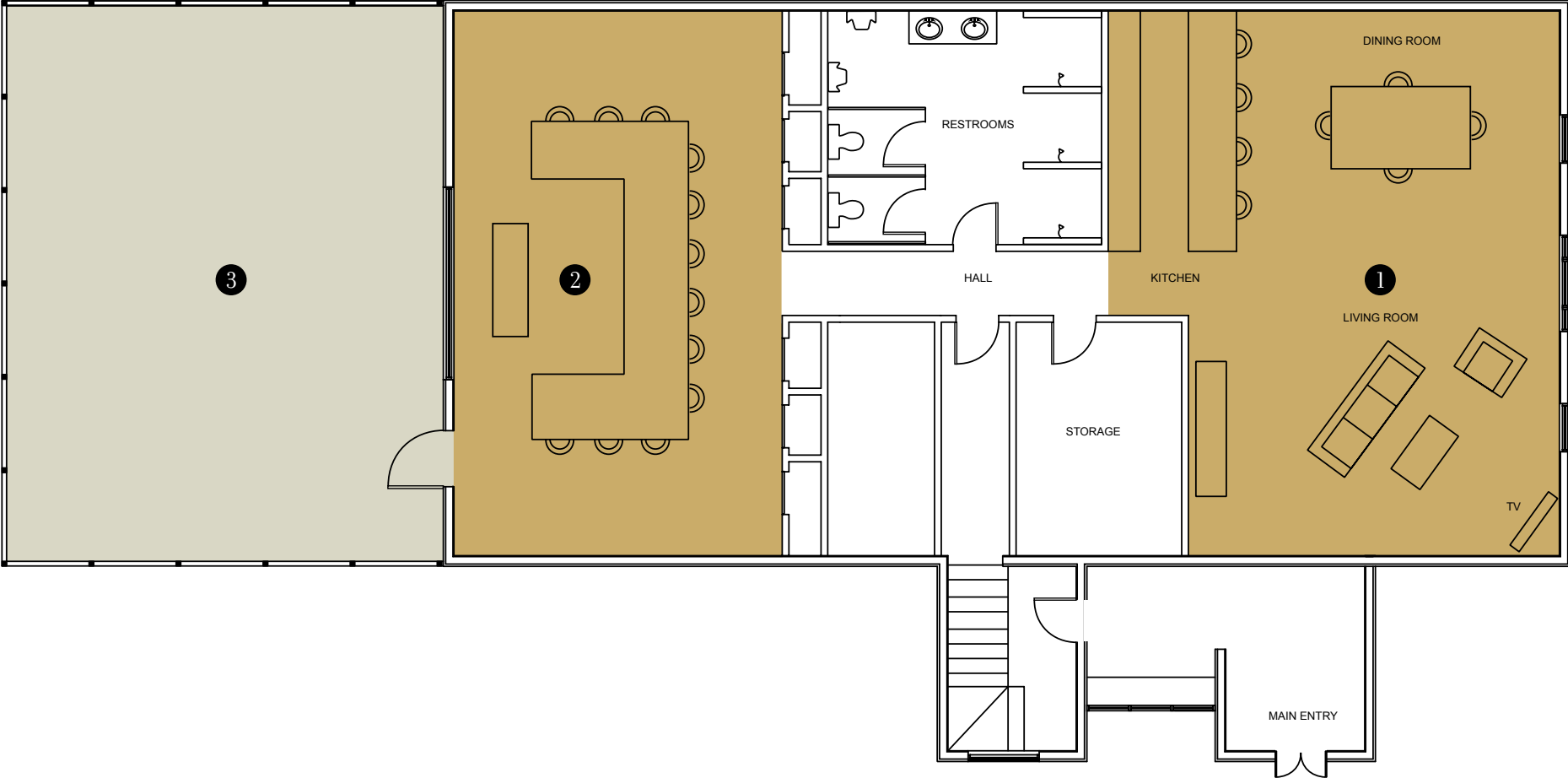
# THE BUNKHOUSE

For those who want a higher level of togetherness, The Bunkhouse is the place for your next meeting. Formerly a hayloft and housing



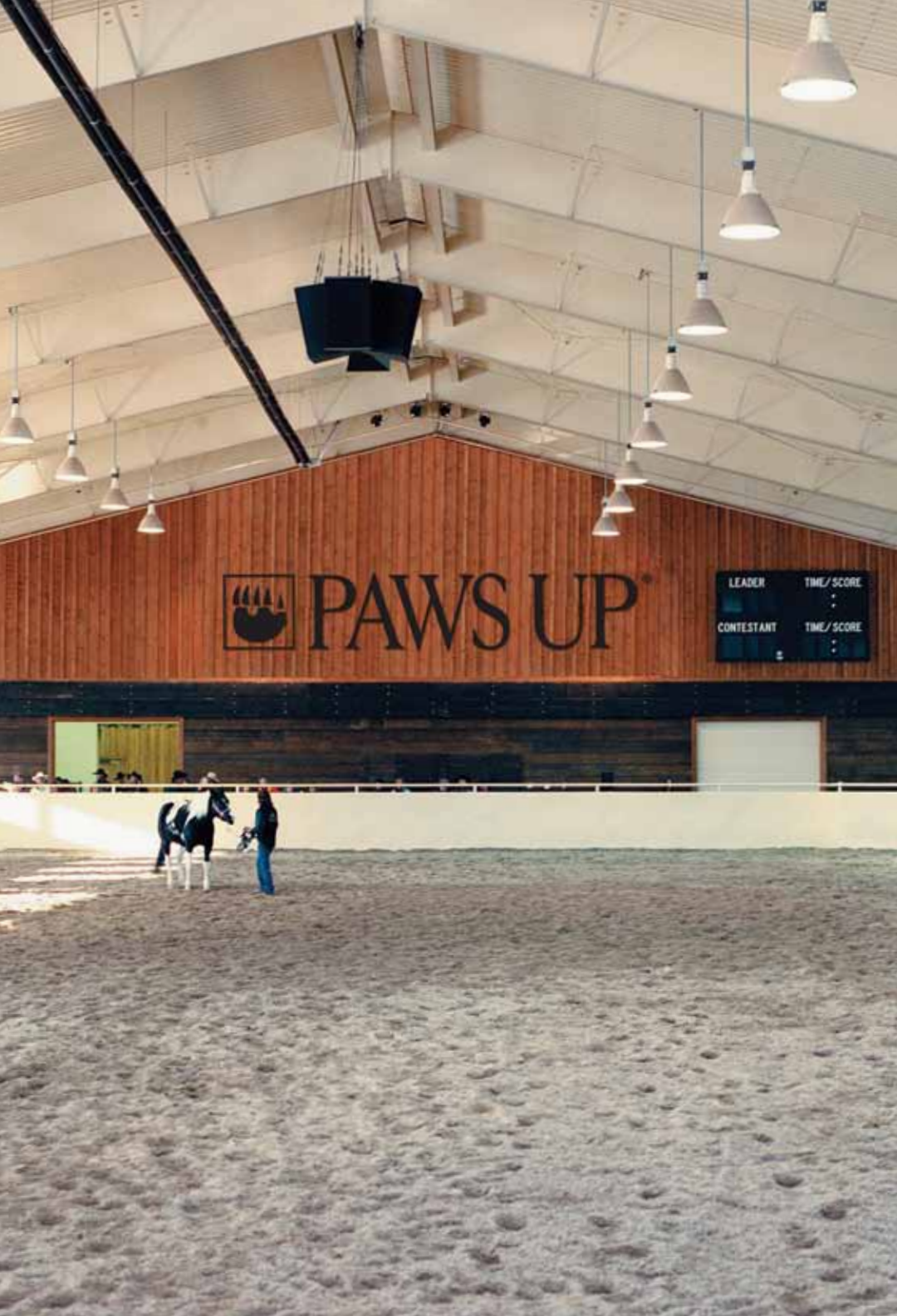
structure for ranch hands, this traditional barn has been converted into an executive conference room that holds up to 24 people. Large windows

provide breathtaking views of panoramic rolling meadows and nearby mountain ranges. An expansive deck allows your team members to take a break while taking in the fresh Montana air. The Bunkhouse also features a spectacular lounge area complete with a spacious living room, dining room, fully outfitted kitchen and a big-screen TV.



Key and Capacities		Square Footage	Dimensions (L x W)	Theater	Classroom	U-Shape	Hollow Square	Conference	Banquet	Reception
	The Bunkhouse	2,450								
1	Lounge and Kitchen	644	23 x 28	30	20	12	16	12	20	100
2	Meeting Room	644	23 x 28	40	24	12	16	12	–	–
3	Exterior Deck	759	23 x 33	20	–	12	–	12	–	100





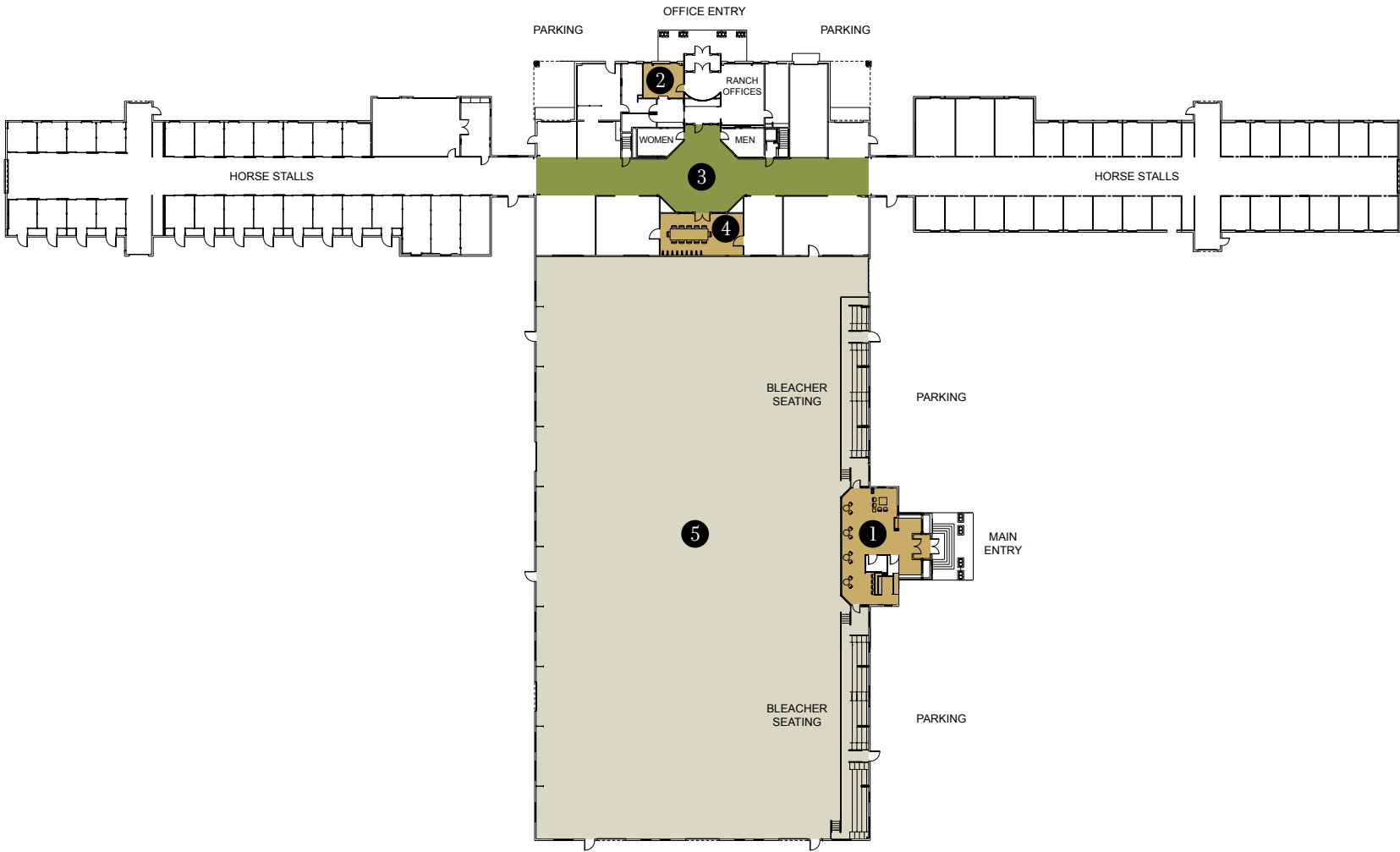
# THE SADDLE CLUB

The Resort at Paws Up is home to one of Montana’s premier equestrian centers – The Saddle Club at Paws Up. This authentic ranch edifice



was built in 1999 to breed, house and train Paws Up’s resident horses. It’s the largest private equestrian center in

Montana, featuring a 35,000-square-foot arena ideal for rodeos, equestrian shows, equestrian training, expositions or parties of any kind. Unique, luxurious, and absolutely gigantic, The Saddle Club is the perfect facility for any group or corporate function in any season.



Key and Capacities		Square Footage	Dimensions (L x W)	Theater	Classroom	U-Shape	Hollow Square	Conference	Banquet	Reception
	The Saddle Club	75,000								
1	Sky Box	1,058	46 x 23	30	20	16	20	10	16	30
2	Boardroom	238	17 x 14	–	–	–	8	–	–	–
3	Tack Room Foyer	5,600	140 x 40	50	40	30	30	30	90	90
4	Tack Room	648	36 x 18	–	–	–	–	20	16	30
5	Arena	34,300	245 x 140	300	300	–	–	–	400	400



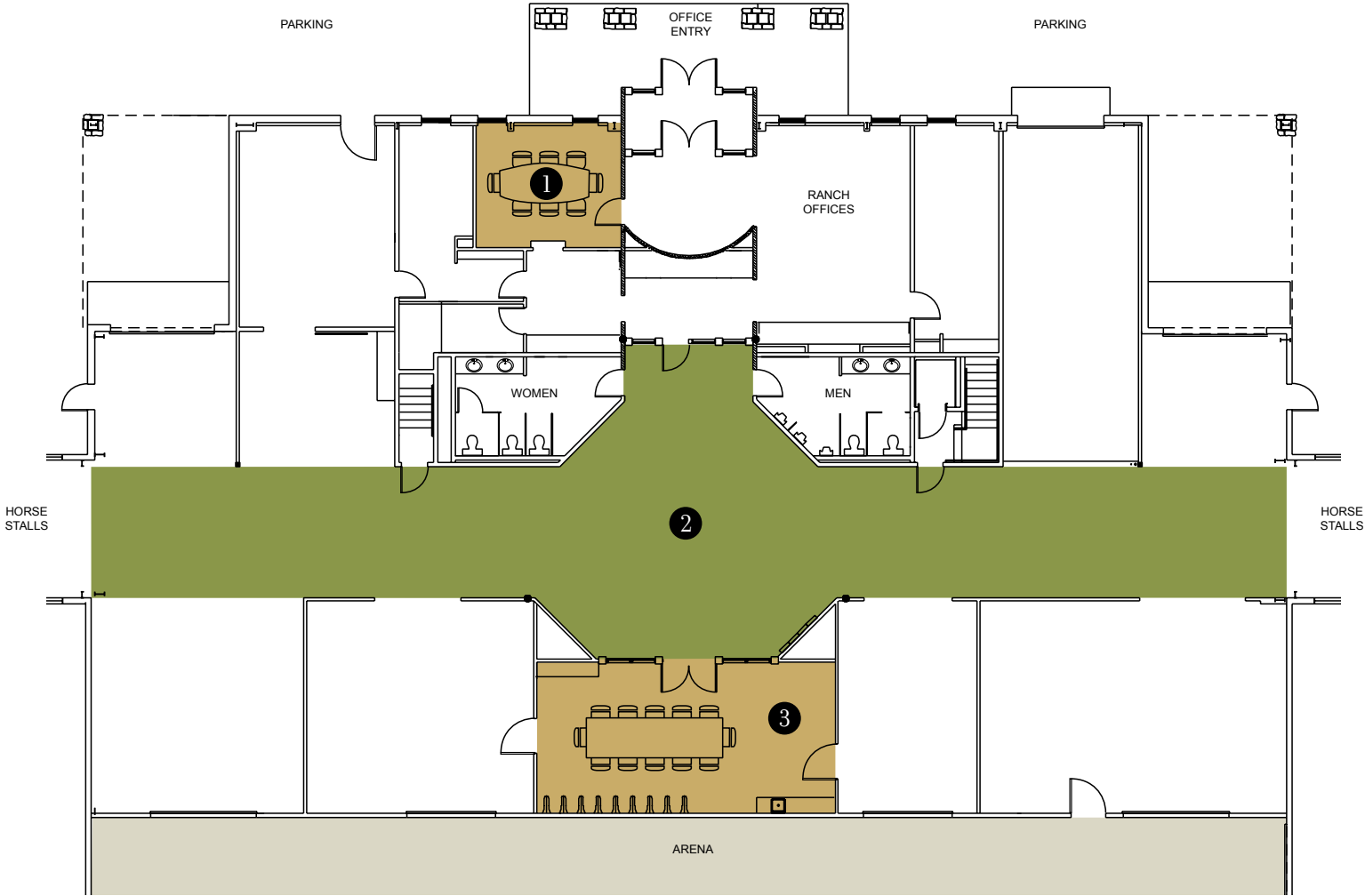


THE SADDLE CLUB  
TACK ROOM

The Tack Room boasts a sophisticated, authentic barn feel providing a fun and unique party atmosphere.



Iron and elk-antler candelabras cast a warm glow over walls lined with Paws Up saddles and tack. This venue is perfect for an intimate western-style dinner or special awards ceremony. For an event that your group will be talking and blogging about for years to come, the Tack Room is the place.



Key and Capacities		Square Footage	Dimensions (L x W)	Theater	Classroom	U-Shape	Hollow Square	Conference	Banquet	Reception
	The Saddle Club	75,000								
1	Boardroom	238	17 x 14	–	–	–	8	–	–	–
2	Tack Room Foyer	5,600	140 x 40	50	40	30	30	30	90	90
3	Tack Room	648	36 x 18	–	–	–	–	20	16	30





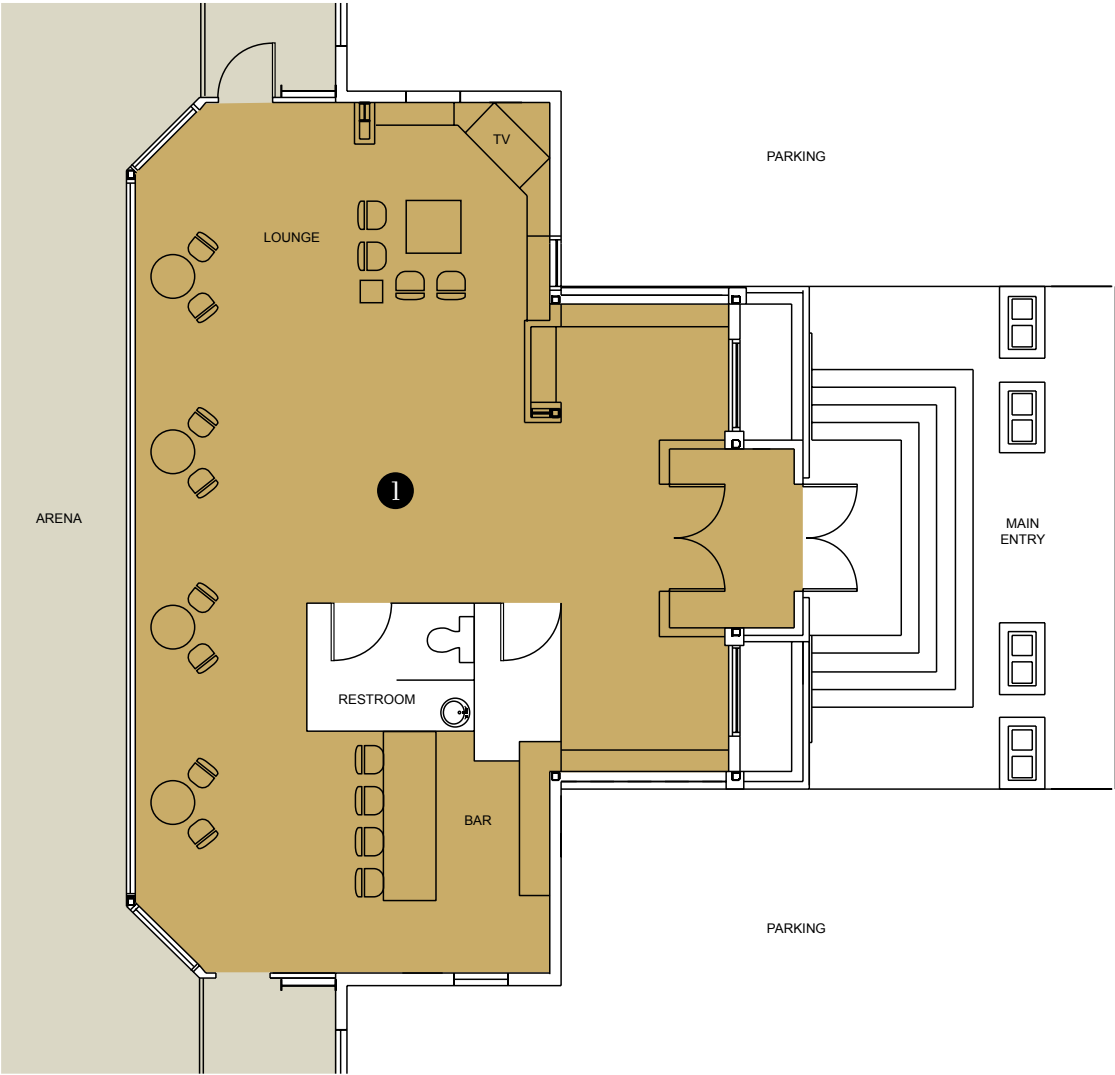
# THE SADDLE CLUB SKY BOX

The Saddle Club houses the most elegant of western-themed conference rooms and hospitality areas. Overlooking the arena is the VIP Sky



Box – the ultimate lounge for luxurious receptions. It features a fully stocked, built-in leather bar, a big-screen television, plush leather seating and refined

rustic tables and chairs with front-row views of all the equestrian action taking place in the arena. The intimate, unique atmosphere of the Sky Box is perfect for any gathering of up to 25 people.



Key and Capacities		Square Footage	Dimensions (L x W)	Theater	Classroom	U-Shape	Hollow Square	Conference	Banquet	Reception
	The Saddle Club	75,000								
1	Sky Box	1,058	46 x 23	30	20	16	20	10	16	30





## CATERING

No group event would be complete without great food and wine. We provide professional catering with a wealth of offerings that will surely satisfy the appetites of all members of your group. Grounded in the fundamentals of classic cooking, our chef uses his background and his imagination to create fun, unique and delicious culinary innovations. From gourmet cuisine inspired from cultures around the world, to authentic western ranch dishes and fine, carefully-selected wines, the dining experience at Paws Up is truly unforgettable.







## OUTDOOR VENUES

At Paws Up, cuisine and adventure mingle effortlessly. Gourmet barbeques, authentic western chuck wagon dinners, and picnic



lunches on the banks of the Blackfoot River are just a few of the ways to dine al fresco under the big Montana sky.

The finest offerings are prepared before your eyes. From all-natural chicken brochettes and kurobuta pork spare ribs with huckleberry barbeque sauce to whole roasted pulled Carolina-style pork and an indigenous micro brew, the only thing groups hunger for after meals like this is the next culinary adventure on the itinerary.











4 0 0 6 0 P A W S U P R O A D G R E E N O U G H , M T 5 9 8 2 3  
8 0 0 - 4 7 3 - 0 6 0 1 T H E R E S O R T @ P A W S U P . C O M W W W . P A W S U P . C O M

