

# CREEKSIDE CAMP

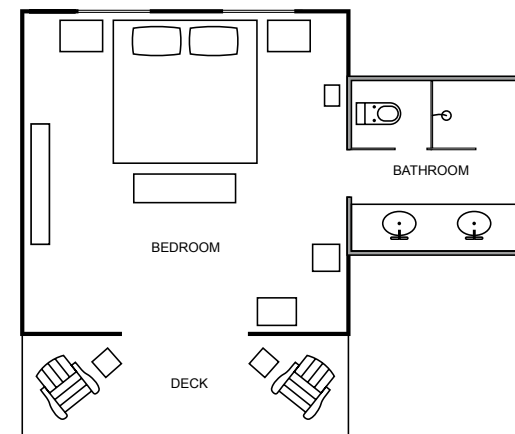


We've given canvas a new cachet at Creekside Camp. This luxury camp is situated on the banks of the beautiful and pastoral Elk Creek and features six spacious tent suites: four two-bedroom suites and two one-bedroom suites. Each tent comes with The Last Best Bed® and an en-suite bathroom with a vanity with two sinks and a large slate shower. Creekside Camp also has an architecturally impressive dining pavilion with a monumental stone-and-timber fireplace, as well as an outdoor fire pit – perfect for a night of stories and s'mores. The gorgeous mountain setting of Creekside Camp will frequently remind you that you're in *The Last Best Place*.

## FEATURES AND AMENITIES

- 505- and 830-square-foot tents
- Four two-bedroom tent suites, each featuring a king and two twin beds
- Two one-bedroom tent suites, each featuring a king bed
- En-suite bathrooms with slate shower, vanity with double sinks and heated slate floor
- Electricity, cooling fans and heat
- Expansive deck with Adirondack chairs
- Dining pavilion with a lounge, fireplace and views of Elk Creek
- Camping butler
- Camp chef
- Daily full-service housekeeping
- Nightly bonfire in fire pit with s'mores
- Laundry service
- Cell and Internet service

ONE-BEDROOM TENT WITH EN-SUITE BATHROOM  
505 SQUARE FEET



TWO-BEDROOM TENT WITH EN-SUITE BATHROOM  
830 SQUARE FEET

