

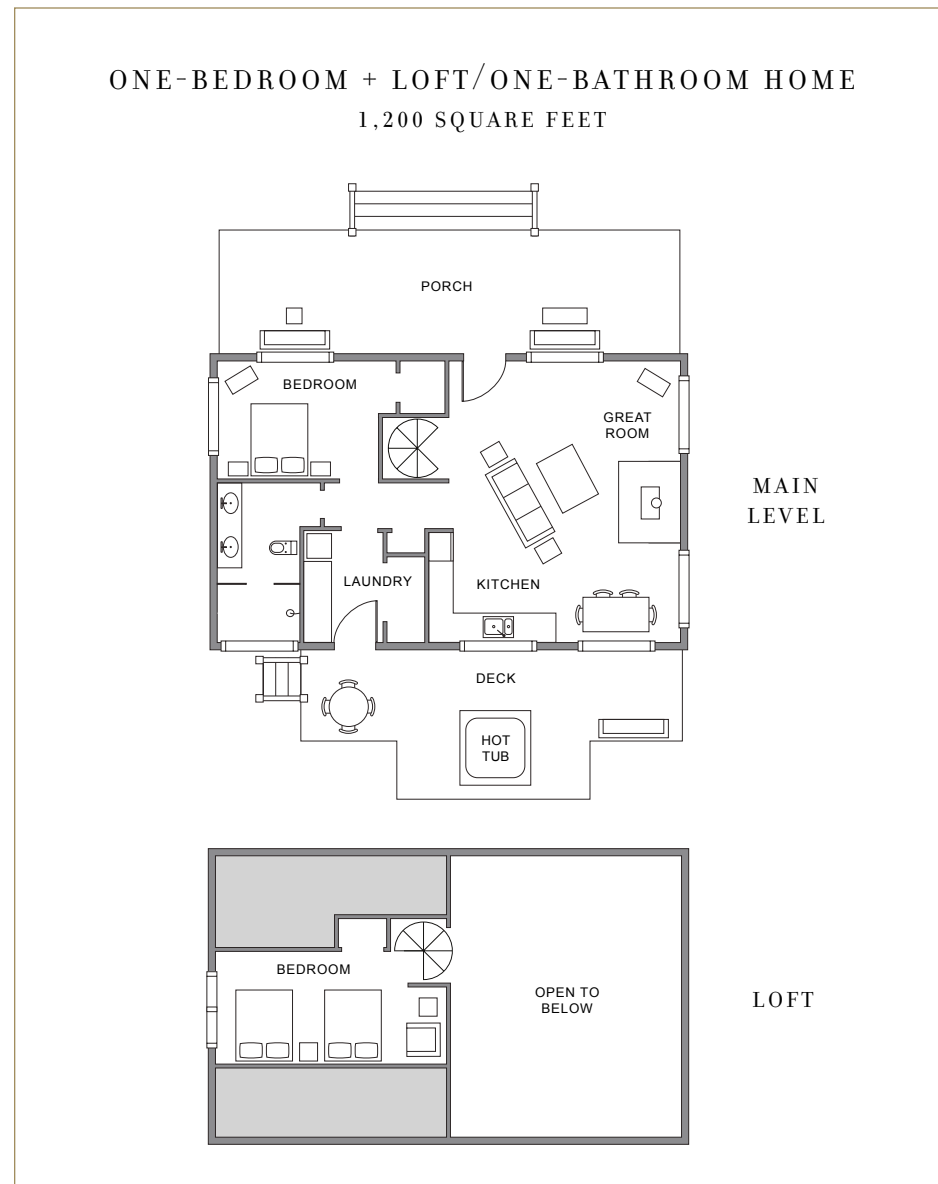
# B I G T I M B E R H O M E S



The one-bedroom Big Timber Homes accommodate up to four guests and feature a master suite rich in western-chic decor. The bathroom includes a heated slate floor, a vanity with double sinks and a Montana-size shower. A black-iron spiral staircase leads to a charming, lofted bedroom for two. The rustic-yet-contemporary kitchen opens up to a great room with an inviting wood-burning stove – creating a relaxing and communal atmosphere. These homes are furnished with a laundry room with a full-size washer and dryer, multiple flat-screen LCD TVs with satellite programming, wireless Internet access, a hot tub and a four-person golf cart.

## FEATURES AND AMENITIES

- 1,200-square-foot home
- Master bedroom
- Loft bedroom featuring two full beds
- Master bathroom on main level
- Great room with wood-burning stove
- Kitchen with refrigerator, dishwasher, microwave, toaster and coffee maker
- Washer and dryer
- Flat-screen LCD TVs with satellite programming
- DVD and CD players
- Wireless Internet access
- Terry robes and slippers
- Deck with four-person hot tub
- Four-person golf cart



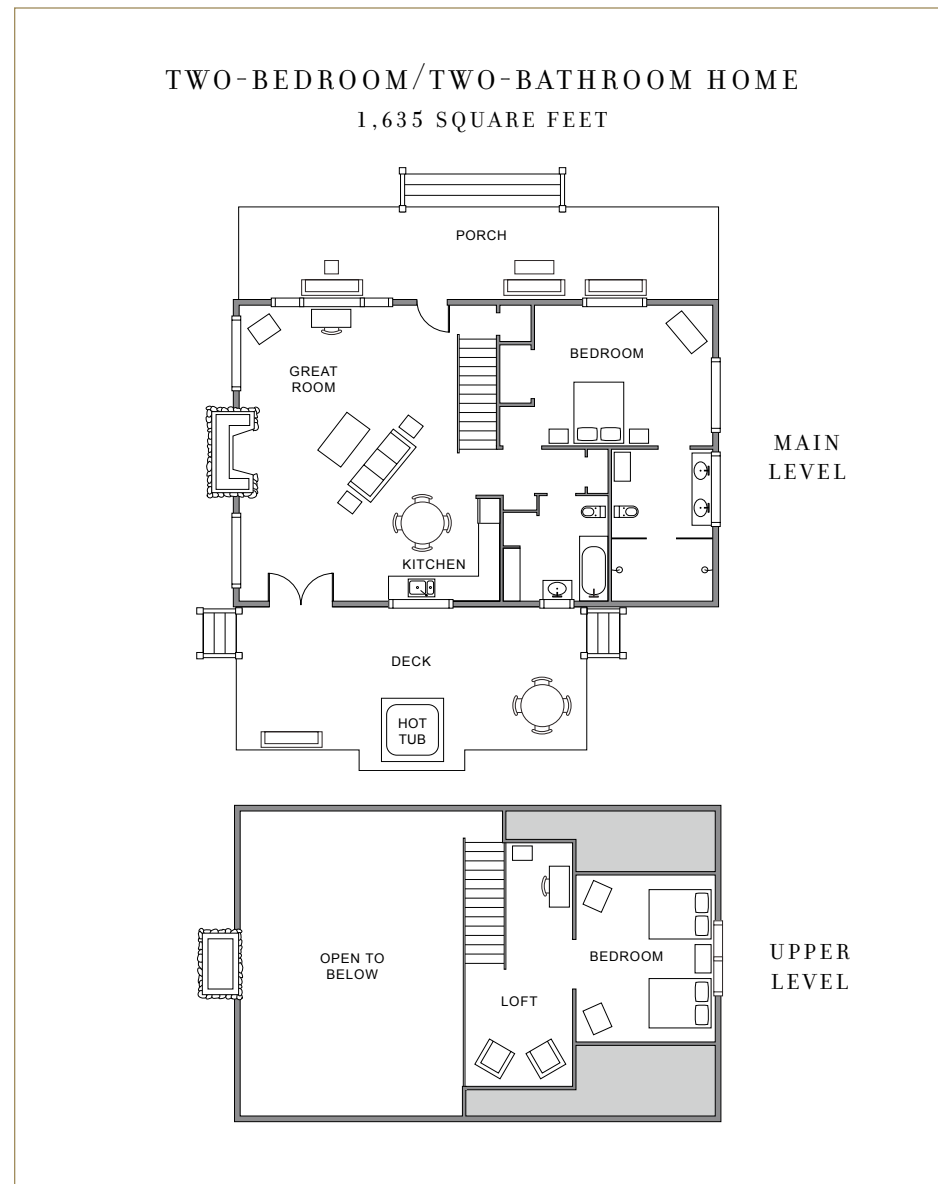
# B I G T I M B E R H O M E S



The two-bedroom Big Timber Homes accommodate up to four guests and feature a striking, well-appointed master bedroom with plenty of space to stretch out and relax. Nothing washes away trail dust better than a visit to the spacious master bathroom with heated slate flooring, a vanity with double sinks and a roomy shower. To accommodate additional guests, each home has a loft with two full beds and a sitting area. The signatures of the expansive great room are the rustic, elegant furnishings and the beautiful stacked stone and natural timber fireplace. Rich in wilderness style, the contemporary kitchen includes stainless-steel appliances and a beautiful nook with enticing views of the surrounding timberland.

## FEATURES AND AMENITIES

- 1,635-square-foot home
- Master bedroom with en-suite bathroom
- Loft bedroom featuring two full beds
- Second full bathroom on main level
- Great room with stone fireplace
- Kitchen with refrigerator, dishwasher, microwave, toaster and coffee maker
- Washer and dryer
- Flat-screen LCD TVs with satellite programming
- DVD and CD players
- Wireless Internet access
- Terry robes and slippers
- Deck with four-person hot tub
- Four-person golf cart



# B I G T I M B E R H O M E S

The three-bedroom Big Timber Homes accommodate up to eight guests and are the largest of the Big Timber Homes. These expansive 2,100-square-foot dwellings feature two bedrooms on the main floor, a loft bedroom on the second floor and two well-appointed bathrooms. The spacious master bathroom includes a roomy, Montana-size shower and the second bathroom has the added luxury of a whirlpool bathtub. The kitchen offers guests a full-size refrigerator, dishwasher, deep-basin sink and a microwave. The highlight of the home is its enormous great room with monumental stone fireplace, beautiful mélange of unique western furnishings and wilderness views.

## FEATURES AND AMENITIES

- 2,100-square-foot home
- Master bedroom with en-suite bathroom
- Two additional bedrooms
- Second full bathroom on main level
- Great room with stone fireplace
- Kitchen with refrigerator, dishwasher, microwave, toaster and coffee maker
- Washer and dryer
- Flat-screen LCD TVs with satellite programming
- DVD and CD players
- Wireless Internet access
- Terry robes and slippers
- Deck with four-person hot tub
- Four-person golf cart

